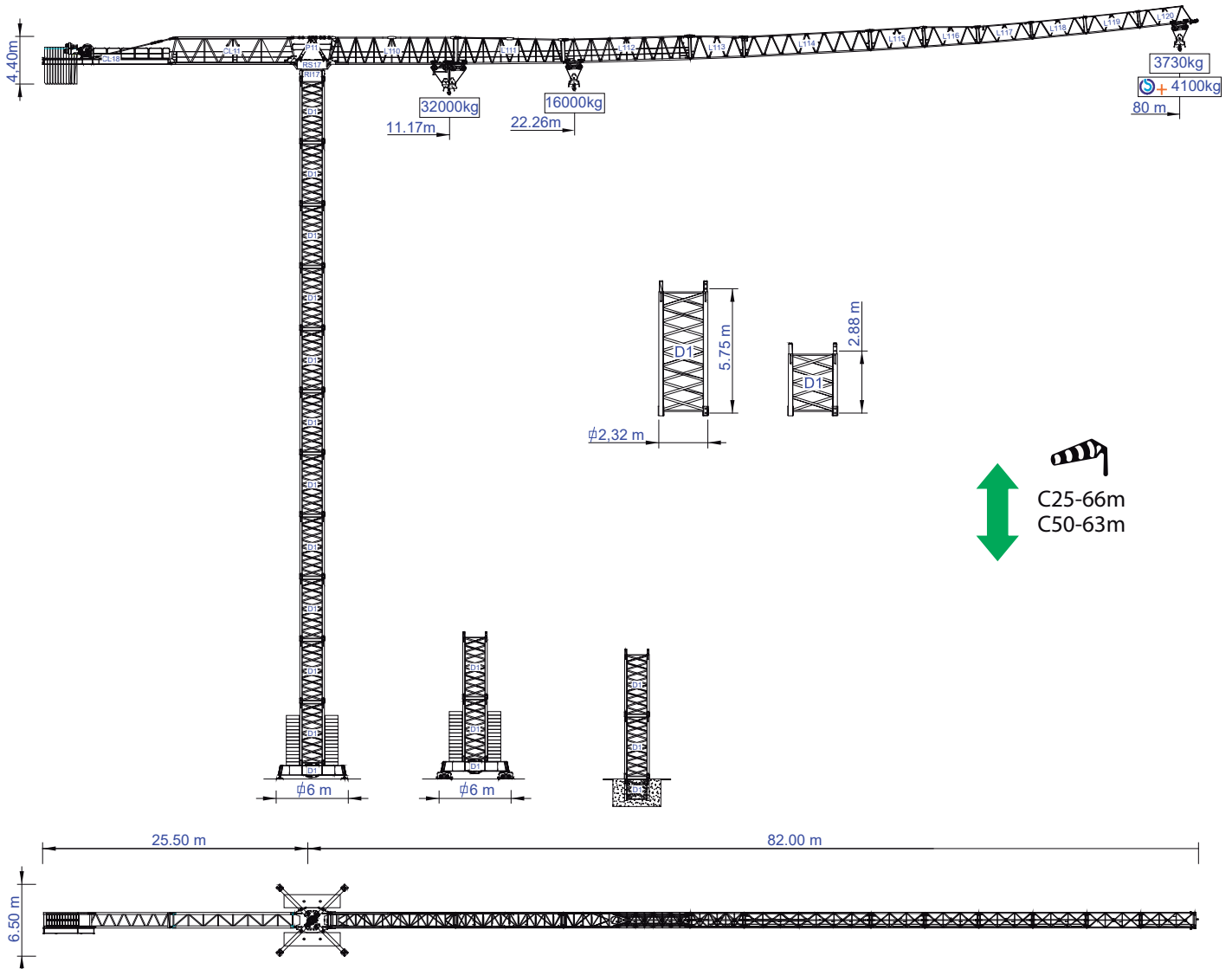


STAFFORD SOIMA

TOWER CRANES

SGT 8041TL

Data Sheet / Catalogo / Fiche Technique / Scheda Dati / Dentenblatt / техническая спецификация
Metric / Métrico / Métrique / Metrico / Metrisch / метрика



Headquarters

3620 S. 40th Street, Phoenix, AZ, 85040 USA

+1 (480) 993 3302

Factory

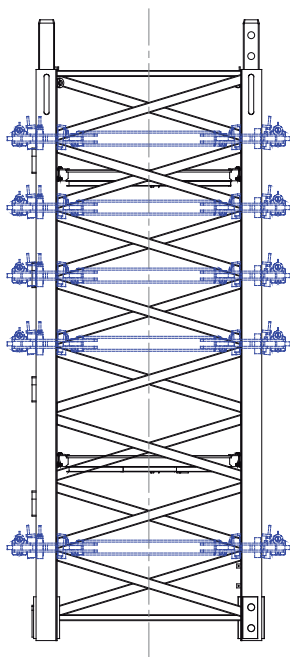
Zona Industrial de Canas de Senhorim - EN 234, 3525-040 Canas de Senhorim - Portugal

+351 232 673 530 info@staffordsoima.com

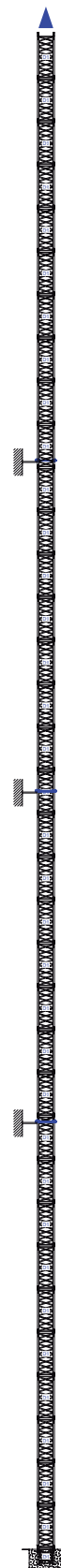
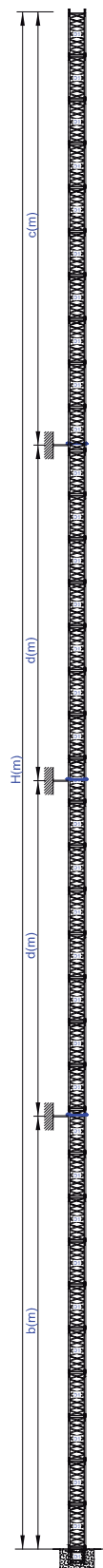
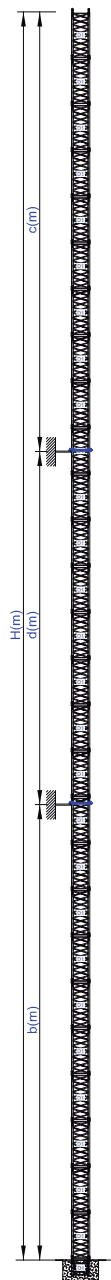
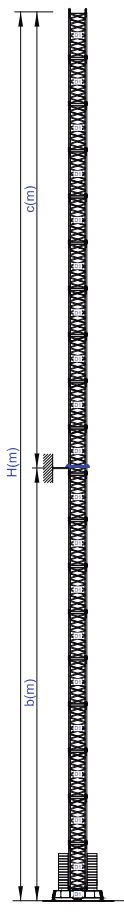
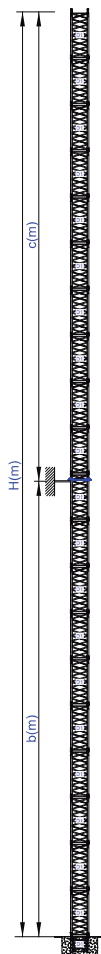
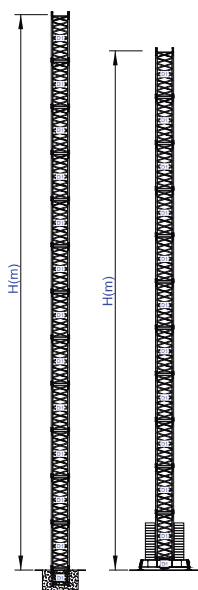
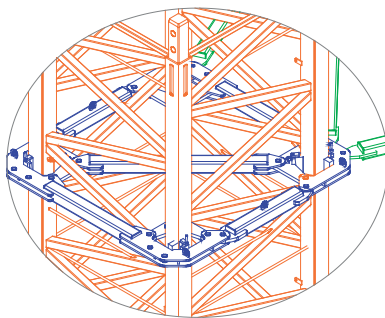
www.staffordsoima.com



Empresa certificada no âmbito da Conceção, Fabrico e Serviço Pós-venda de Gruas Soima e componentes



More options



Wind
C25
C50
D50

H
66
63
51

H
66
63
51

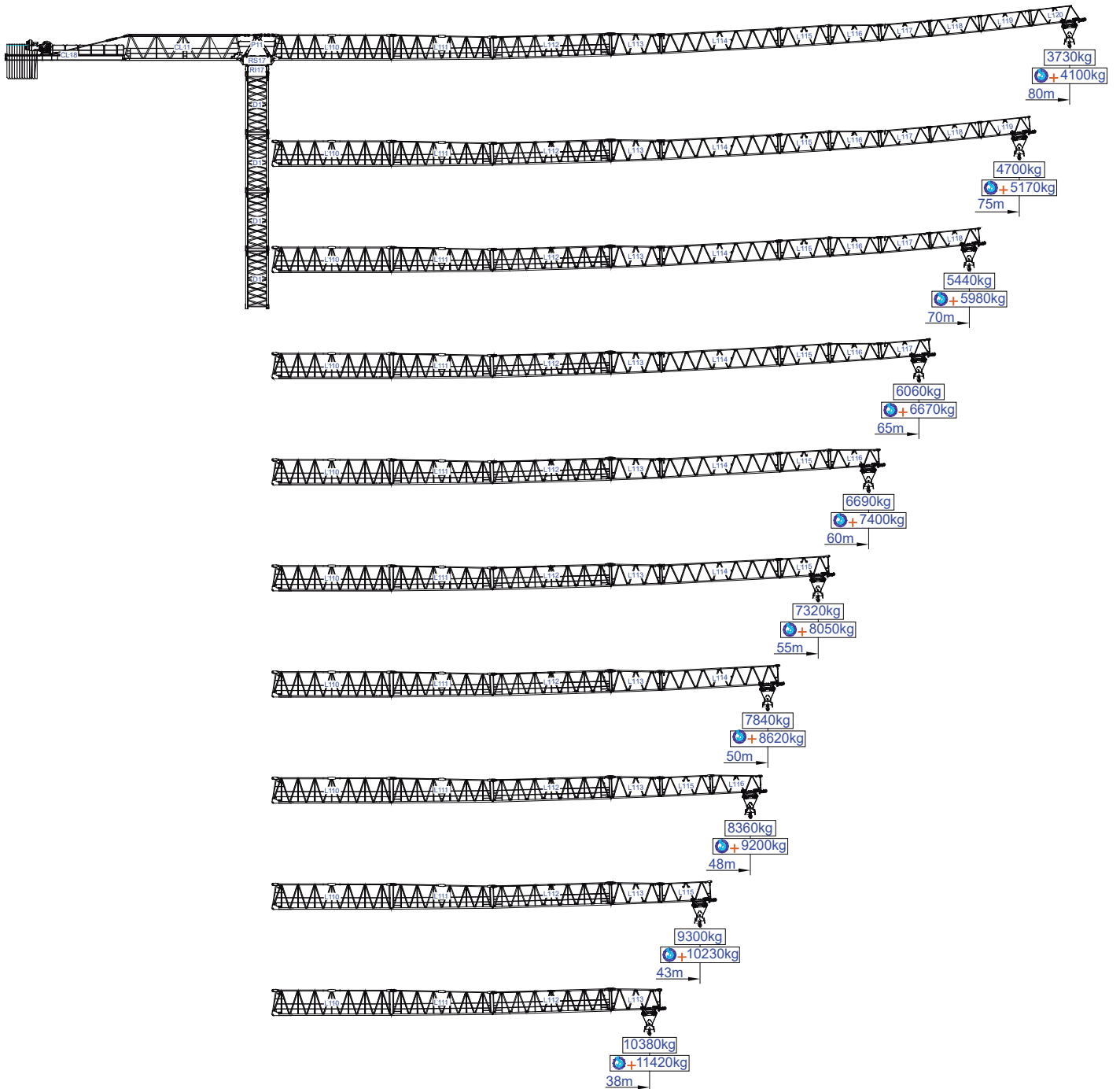
H	b	c
96	54	42

H	b	c
90	48	42

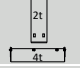


H	b	c	d
126	54	42	30

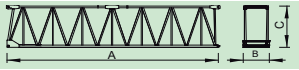
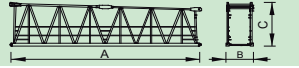
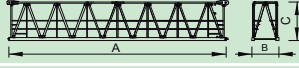
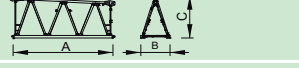
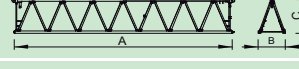
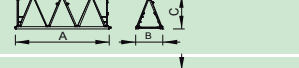
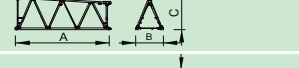
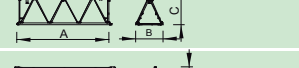
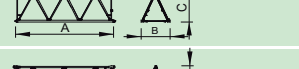
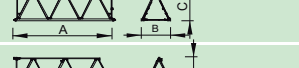
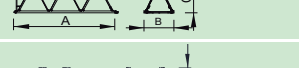
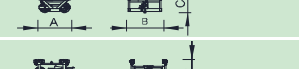
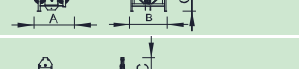

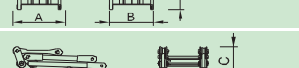

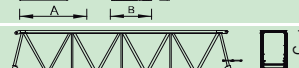
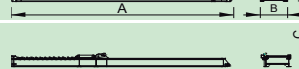

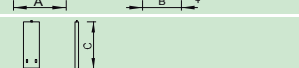
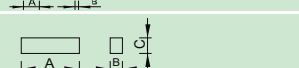

H	b	c	d
156	54	42	30

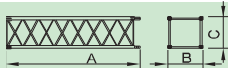
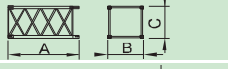

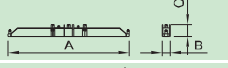
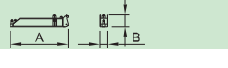
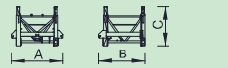







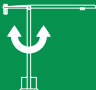
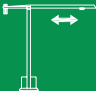
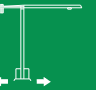








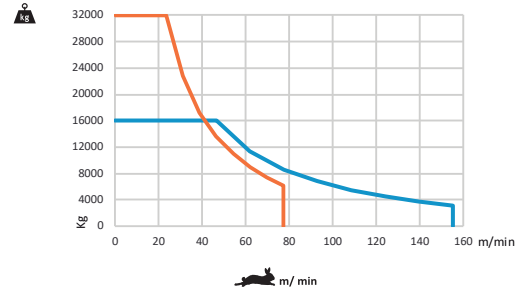
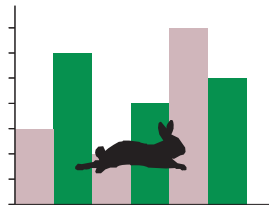
m	 2t 4t					10	15	20	25	28	33	38	43	48	50	55	60	65	70	75	80	m
		32000kg	16000kg																			
80	24000kg 1x4000kg 10x2000kg	11,17	22,26	16000	16000	16000	15550	13760	11520	9860	8580	7570	7230	6470	5840	5300	4850	4460	4100	3220		
75	24000kg 1x4000kg 10x2000kg	12,62	25,15	16000	16000	16000	16000	15700	13150	11280	9830	8700	8310	7450	6740	6140	5620	5170				
70	22000kg 1x4000kg 9x2000kg	13,30	26,52	16000	16000	16000	16000	16000	13930	11950	10430	9230	8820	7920	7160	6530	5980					
65	22000kg 1x4000kg 9x2000kg	13,54	26,99	16000	16000	16000	16000	16000	14200	12190	10640	9420	9000	8070	7320	6670						
60	20000kg 1x4000kg 8x2000kg	13,62	27,14	16000	16000	16000	16000	16000	14280	12250	10700	9470	9050	8130	7360							
55	18000kg 1x4000kg 7x2000kg	13,50	26,92	16000	16000	16000	16000	16000	14160	12140	10600	9380	8970	8050								
50	16000kg 1x4000kg 6x2000kg	13,04	26,00	16000	16000	16000	16000	16000	13630	11690	10210	9030	8620									
48	14000kg 1x4000kg 5x2000kg	13,26	26,43	16000	16000	16000	16000	16000	13870	11900	10400	9200										
43	12000kg 1x4000kg 4x2000kg	13,07	26,05	16000	16000	16000	16000	16000	13660	11730	10230											
38	10000kg 1x4000kg 3x2000kg	12,76	25,44	16000	16000	16000	16000	15880	13310	11420												


		A (mm)	B (mm)	C (mm)	kg (± 5%)		
Jib / Lança / Fleche / Braccio		L110	11825	1460	2510	7300	
/ Ausleger / кливер		L111	10000	1460	2566	4150	
		L112	11935	1460	2210	3850	
		L113	5275	1460	2290	1300	
		L114	11970	1460	1910	2550	
		L115	5210	1460	1955	800	
		L116	5190	1460	1940	700	
		L117	5190	1460	1630	650	
		L118	5160	1460	1600	520	
		L119	5140	1460	1600	400	
		L120	5110	1460	1600	350	
	Trolley / Carrinho / Chariot / Carrello		CP1	1670	1865	950	570
	/ Wagen / тележка		CS1	1880	1760	1305	890
Hook / Moitão / Accrocher / Gancio		MP1	1020	340	1180	505	
Head turntable / Cabeçote / Pivot / Testa giradischi / Kopfplattenspieler		RS17 RI17	3430	2200	2310	13000	
		P5	3400	1450	1160	2000	
Cabin / Cabine / Cabine / Kabine / Кабина		C4	3680	2265	2540	2500	
Counter-jib / Contra lança / Contre-flèche / Gegenausleger / Контр-стрела		CL11	11935	1450	2425	6200	
		CL18	11945	1600	745	3100	
Hoisting Winch +rope / Elevação +cabo / Treuil de		M1	3000	2200	1420	6200	
Counterweight / Contrapeso / Contrepoids / Gegengewicht / Противовес		CP6	1020	250	3400	10x2000 20000	
		CP7	3000	600	850	4000	

			A (mm)	B (mm)	C (mm)	kg
Tower section / torre / Coupe tour / Sezione torre		D1	6245	2322	2322	4550
/ Turmabschnitt / Секция башни		D1	3365	2322	2322	2580
Foundation anchor / Tramo encastrar /		D1	2500	2322	2322	2000
Base Chassis		D1	8725	800	1600	5500
			4200	380	1600	2x2775 5550
11050						
Climbing tower section /		TL1	2846	2584	2300	2665
Climbing cage		TL2	11960	310	2560	3650
		TL3	11960	240	2560	2x2035 4070
		TL4	4740	270	2560	1500




		
	0 a 1 r.p.m.	4x8,0 daN.m
	0 a 60 m/min	15 kW
	0-10 m/min	4x5,5 kW

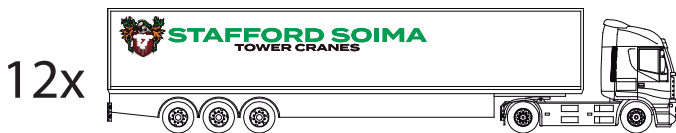
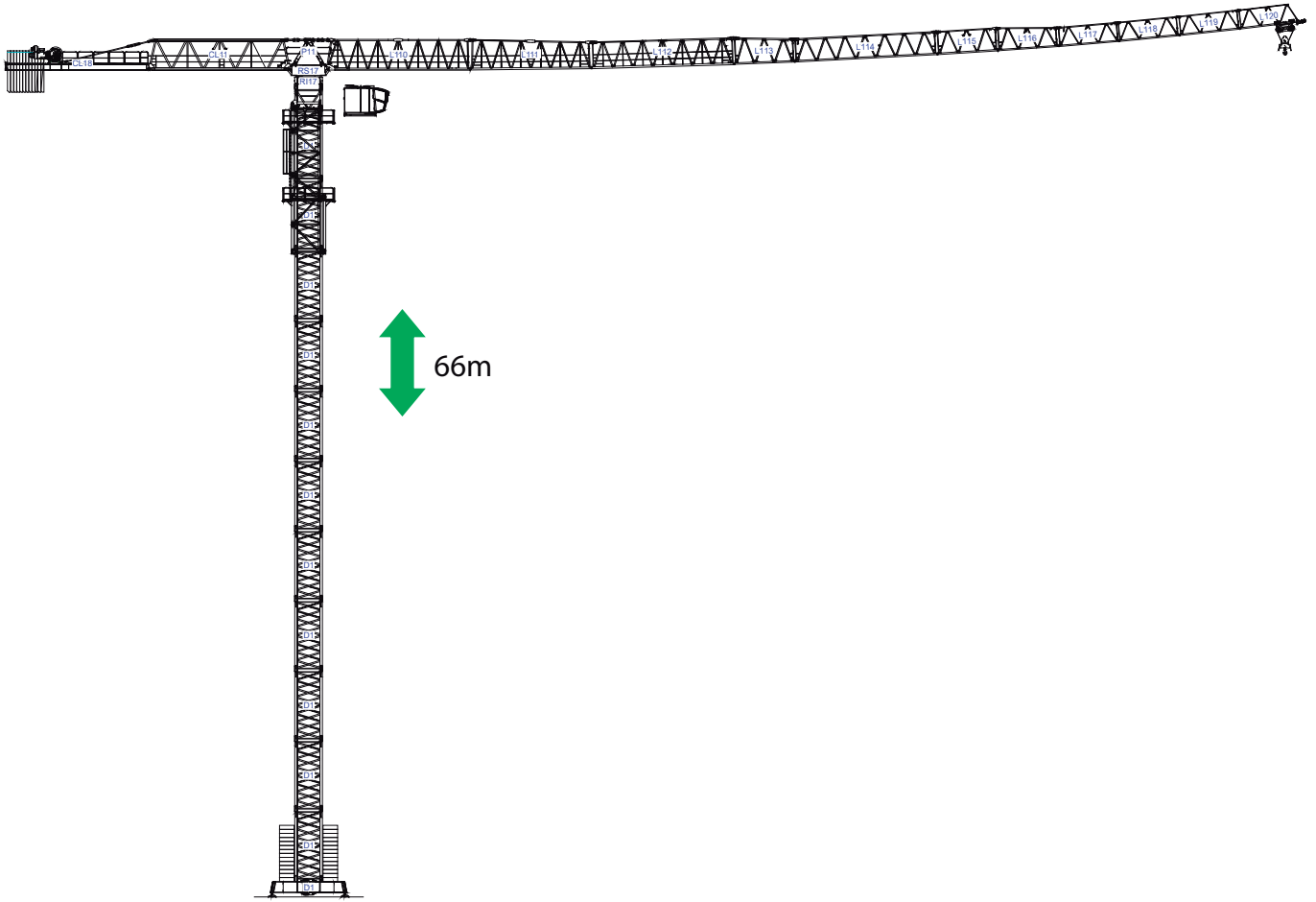
		
	0 a 155 m/min	110 kW
	0 a 77,5 m/min	LS



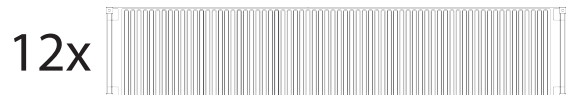
	278 A / 230 kVA
	400/480V +-5% (50/60 Hz)

Max height of hoist

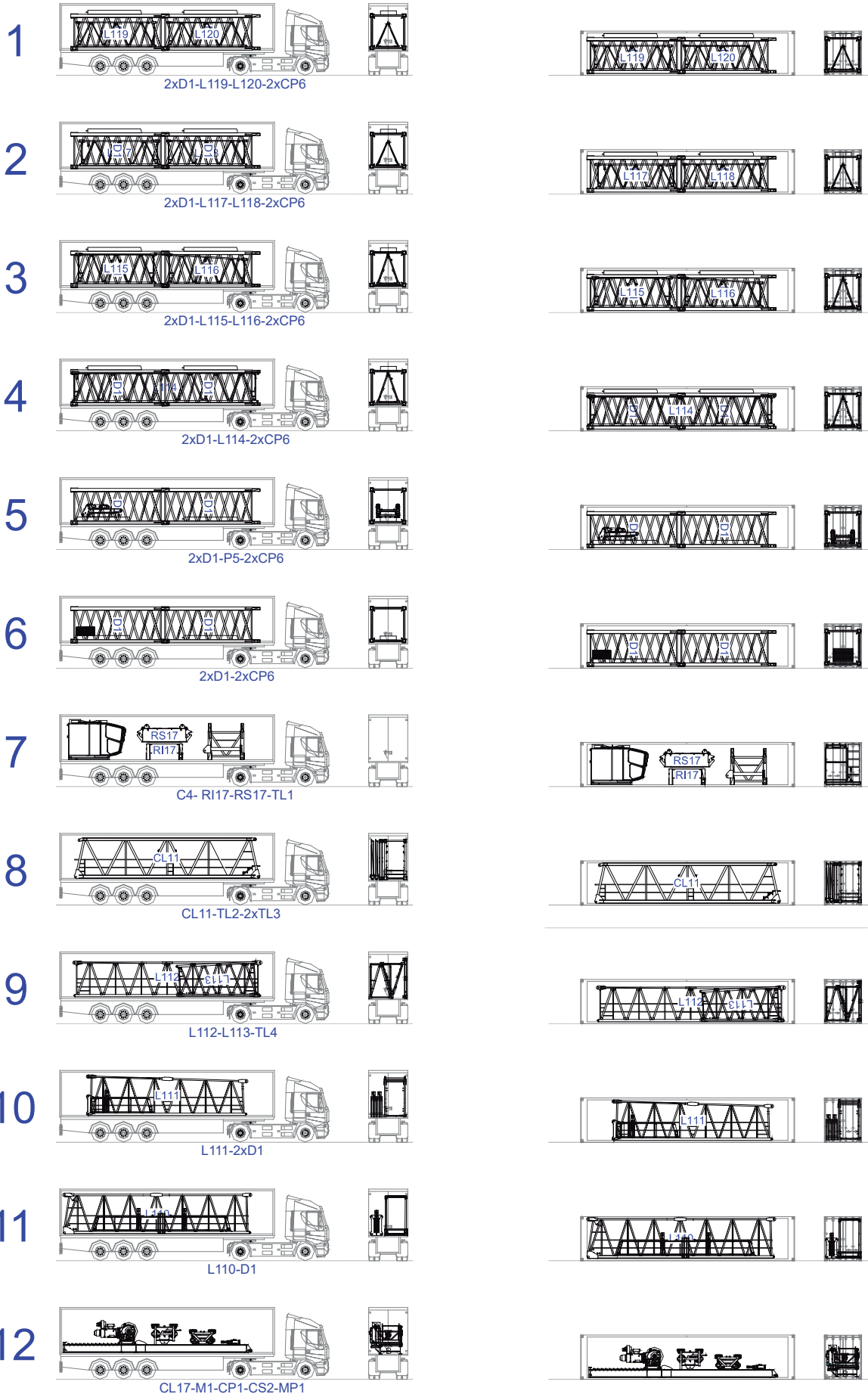
 (H)Max. 140m
 (H)Max. 280m + 

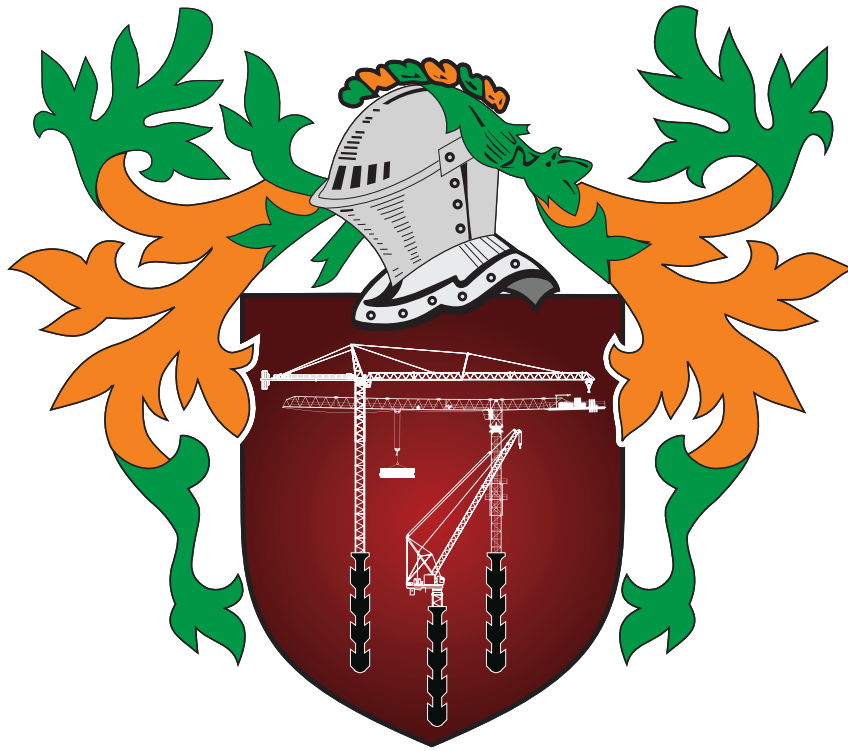


/



40' High Cube






STAFFORD SOIMA

TOWER CRANES

STAFFORD SOIMA, SA

Headquarters

 3620 S. 40th Street , Phoenix , AZ, 85040 USA

 +1 (480) 993 3302

Factory

 Zona Industrial de Canas de Senhorim - EN 234, 3525-040 Canas de Senhorim - Portugal

 +351 232 673 530  info@staffordsoima.com

 staffordsoima.com