

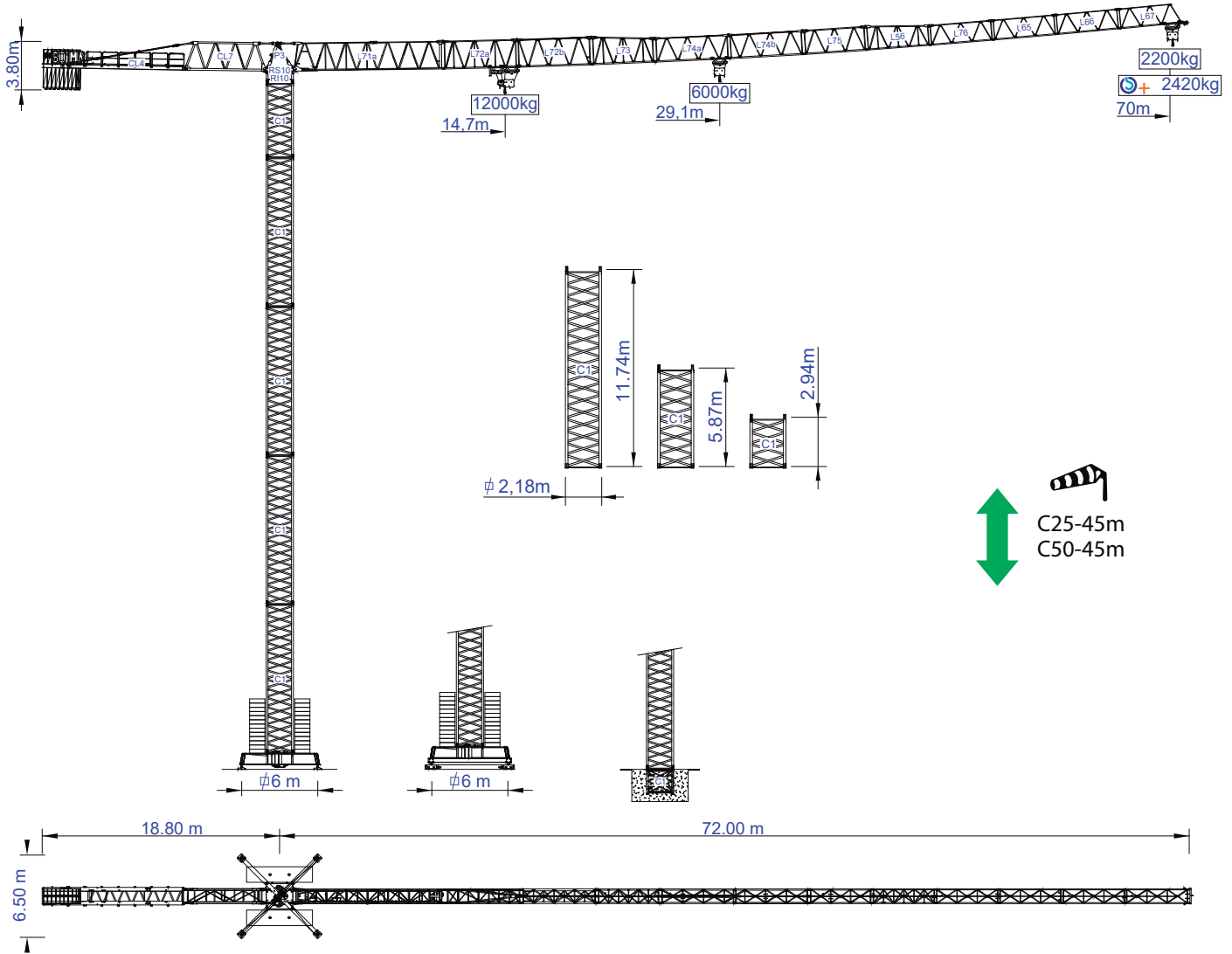


STAFFORD SOIMA

TOWER CRANES

SGT 7022TL

Data Sheet / Catalogo / Fiche Technique / Scheda Dati / Dentenblatt / техническая спецификация
Metric / Métrico / Métrique / Metrico / Metrisch / метрика



Headquarters

3620 S. 40th Street, Phoenix, AZ, 85040 USA
+1 (480) 993 3302

Factory

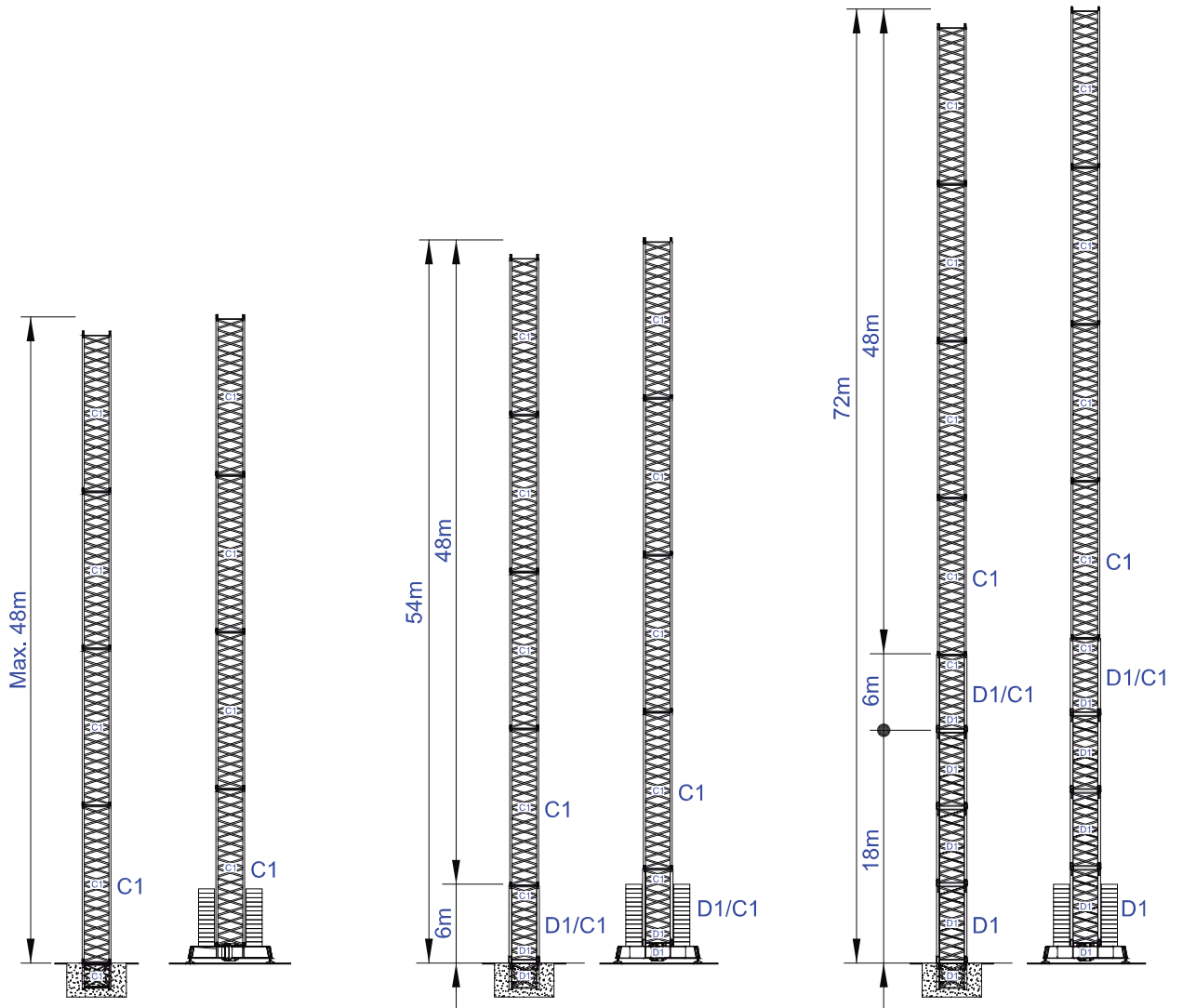
Zona Industrial de Canas de Senhorim - EN 234, 3525-040 Canas de Senhorim - Portugal
+351 232 673 530 info@soima.com

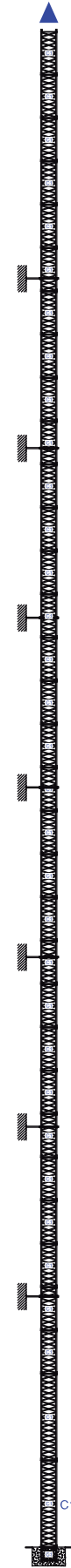
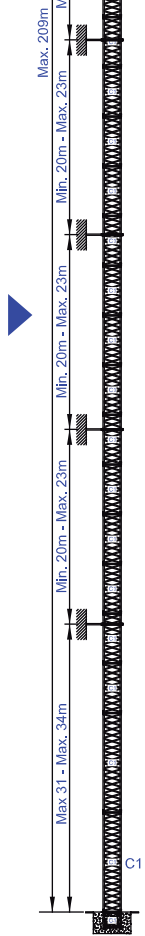
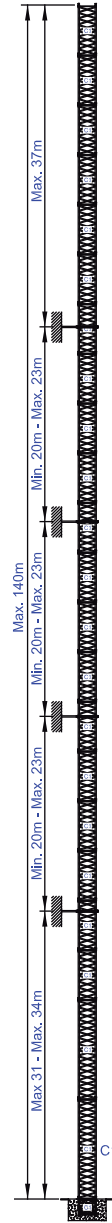
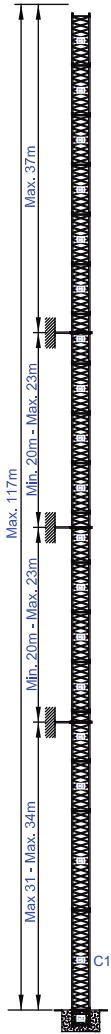
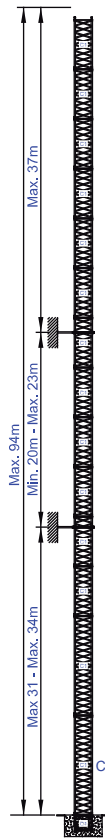
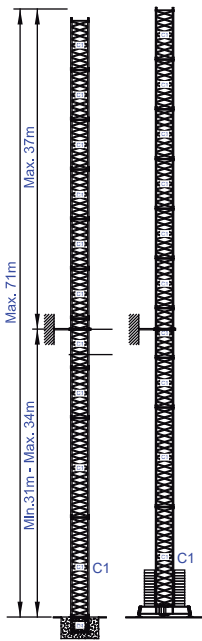
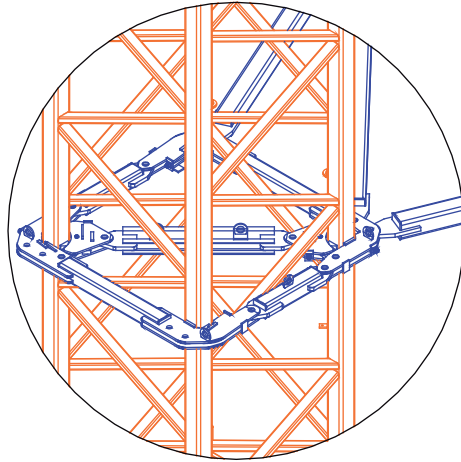
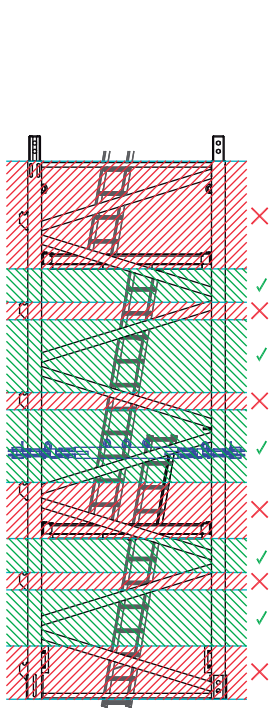
www.staffordsoima.com

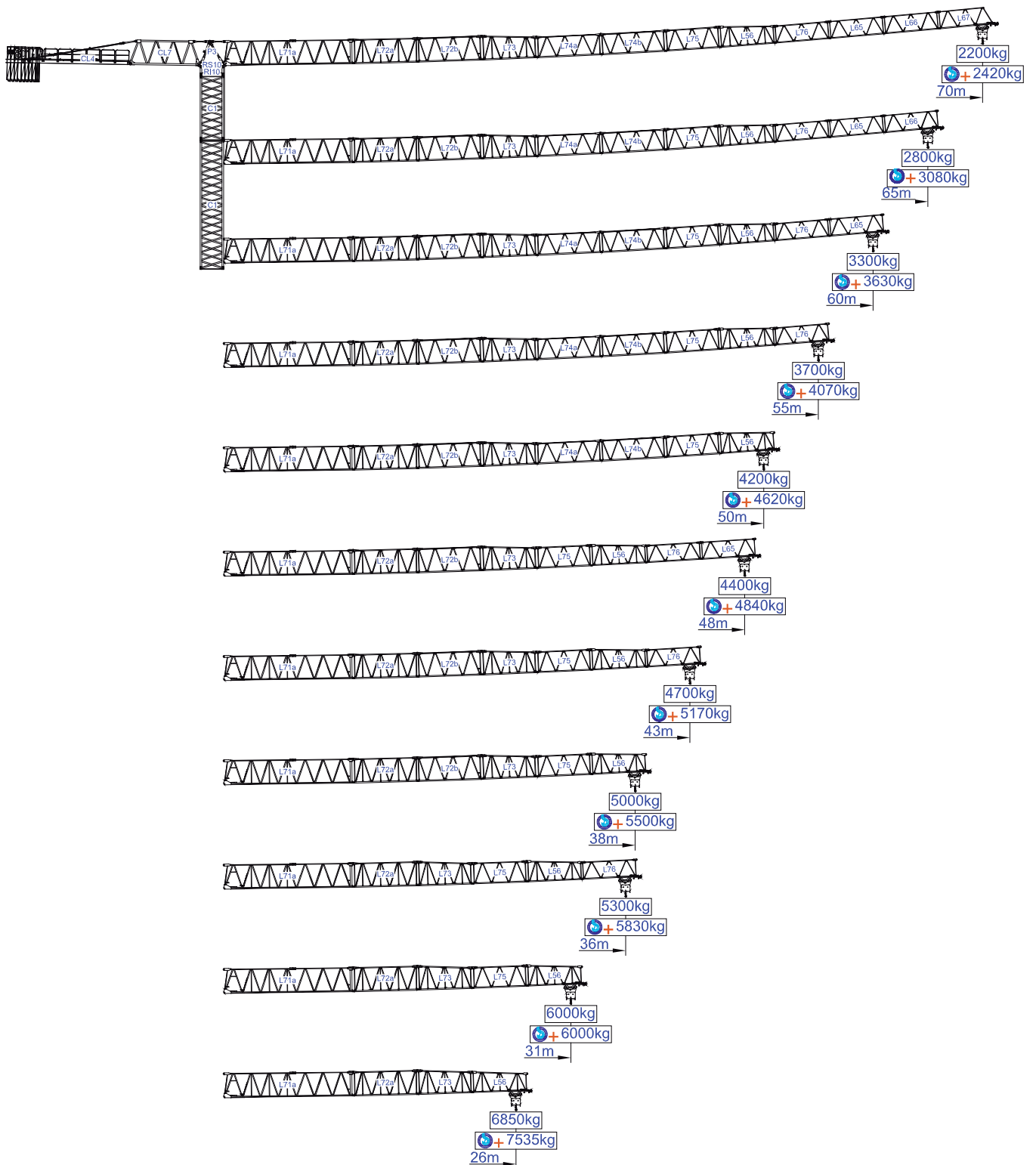
v.2.005-08/23





Empresa certificada no âmbito da Conceção, Fabrico e Serviço Pós-venda de Gruas Soima e componentes









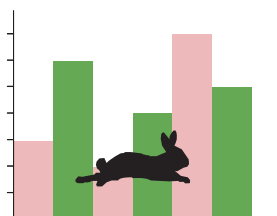





m	 12000kg 6000kg	 6000kg	10	15	18	21	26	31	36	38	43	48	50	55	60	65	70	m	
			kg																kg
70	18000kg 8x2000kg + 2x1000kg	14,70	29,10	6000	6000	6000	6000	6000	6000	5230	4920	4290	3780	3610	3230	2920	2650	2420	
				12000	12000	10560	8910	7010	5720	4790	4480	3850	3340	3170	2790	2480	2210	1980	
65	18000kg 8x2000kg + 2x1000kg	16,60	33,00	6000	6000	6000	6000	6000	6000	6000	5650	4940	4370	4170	3740	3390	3080		
				12000	12000	12000	10240	8090	6620	5570	5210	4500	3930	3730	3300	2950	2640		
60	18000kg 8x2000kg + 2x1000kg	17,70	35,10	6000	6000	6000	6000	6000	6000	6000	6000	5280	4680	4470	4020	3630			
				12000	12000	12000	10960	8660	7100	5970	5610	4840	4240	4030	3580	3190			
55	17000kg 8x2000kg + 1x1000kg	17,90	35,50	6000	6000	6000	6000	6000	6000	6000	6000	5360	4740	4530	4070				
				12000	12000	12000	11110	8780	7210	6070	5700	4920	4300	4090	3630				
50	16000kg 7x2000kg + 2x1000kg	18,20	36,20	6000	6000	6000	6000	6000	6000	6000	6000	5470	4840	4620					
				12000	12000	12000	11320	8950	7350	6190	5810	5030	4400	4180					
48	15000kg 7x2000kg + 1x1000kg	18,20	36,20	6000	6000	6000	6000	6000	6000	6000	6000	5470	4840						
				12000	12000	12000	11330	8970	7360	6190	5820	5030	4400						
43	13000kg 6x2000kg + 1x1000kg	17,30	34,40	6000	6000	6000	6000	6000	6000	6000	5920	5170							
				12000	12000	12000	10730	8470	6940	5840	5480	4730							
38	11000kg 5x2000kg + 1x1000kg	16,20	32,20	6000	6000	6000	6000	6000	6000	5840	5500								
				12000	12000	11780	9960	7850	6420	5400	5060								
36	9000kg 4x2000kg + 1x1000kg	16,20	32,10	6000	6000	6000	6000	6000	6000	5830									
				12000	12000	11770	9940	7840	6420	5390									
31	8000kg 3x2000kg + 2x1000kg	15,60	31,00	6000	6000	6000	6000	6000	6000										
				12000	12000	11320	9570	7540	6160										
26	7000kg 3x2000kg + 1x1000kg	15,30	30,40	6000	6000	6000	6000	6000											
				12000	12000	10770	9090	7150											

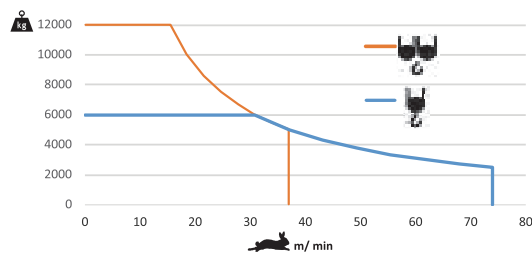



			A (mm)	B (mm)	C (mm)	kg	
Jib / Lança / Fleche / Braccio		L71A	11970	1900	2900	6750	
/ Ausleger / кливер		L72A	6185	1160	2260	1400	
		L72B	6195	1160	2260	1140	
		L73	5230	1160	2260	780	
		L74A	6165	1160	1950	830	
		L74B	6165	1160	1950	710	
		L75	5200	1160	1950	560	
		L56	5200	1160	1930	530	
		L76	5160	1160	1610	400	
		L65	5110	1160	1610	360	
		L66	5110	1160	1610	300	
		L67	5110	1160	1610	300	
	Head turntable / Cabeçote / Pivot / Testa giradischi / Kopfplattenspieler		RS10 RI10	2620	2180	2150	8000
			P3	2430	1300	760	1270
	Counter-jib / Contra lança / Contre-fleche		CL7	6470	1240	2285	2600
		CL4	11400	1500	500	4000	
Counterweight / Contrapeso / Contrepoids / Gegengewicht / Противовес		CP2	1160	330	3140	8x2000 16000	
		CP3	1160	165	3140	2x1000 2000	
Tower section / torre / Coupe tour / Sezione torre / Turmabschnitt / Секция башни		C1	12000	2180	2180	4200	
		C1	6130	2180	2180	2200	
		C1	3195	2180	2180	1200	
Climbing tower section		C1	3195	2250	2250	1360	
Foundation anchor / Tramo encastrar /		C1	2280	2150	2150	850	
Base Chassis		C1	8127	800	1370	4600	
			4200	380	1370	2x1700 3400	
						TOTAL	8000
Base Chassis		C1s	6605	800	1370	3420	
			3160	380	1370	2x1840 3680	
						TOTAL	7100

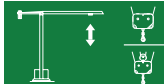


		
	0 a 1 r.p.m.	3x5 daN.m
	0 a 60 m/min	5,5 kW
	0-10 m/min	2x4 kW

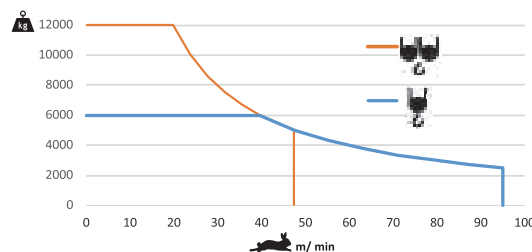



		
	0 a 74 m/min	37 kW
	0 a 37 m/min	



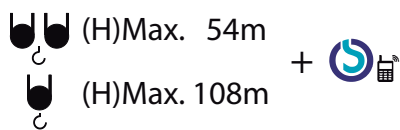
	55 kVA
	400 V +- 5% (50/60 Hz)

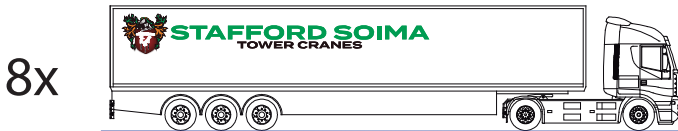
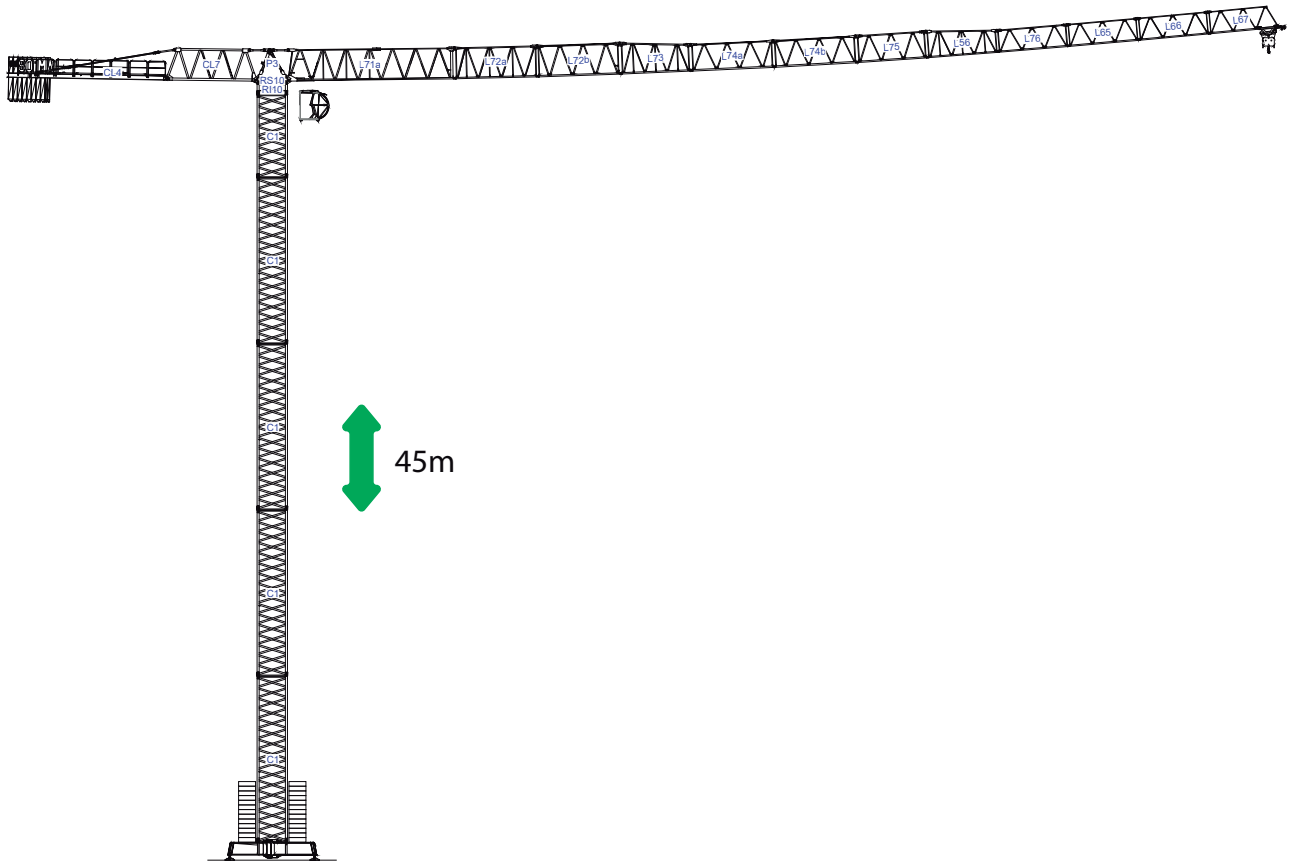
		
	0 a 95 m/min	45 kW
	0 a 47,5 m/min	



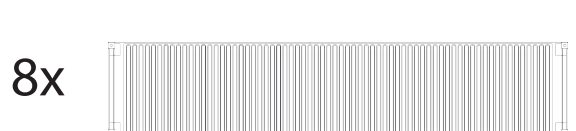
	65 kVA
	400 V +- 5% (50/60 Hz)

Max height of hoist



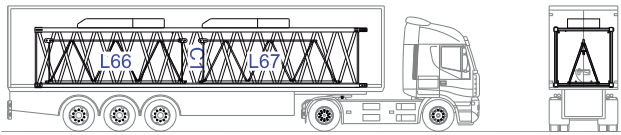


/

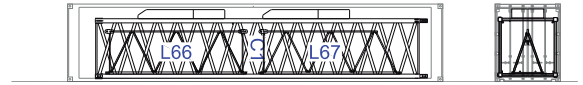


40' High Cube

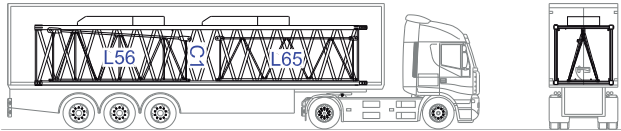
1



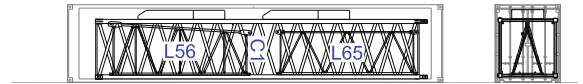
C1-L66-L67-2xCP2



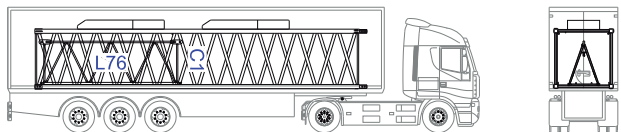
2



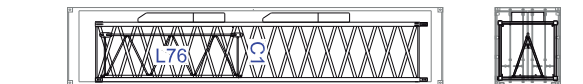
C1-L56-L65-2xCP2



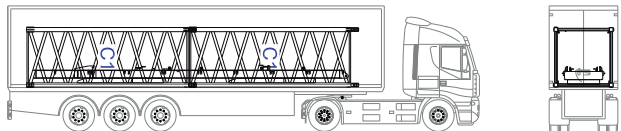
3



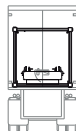
C1-L76-2xCP2



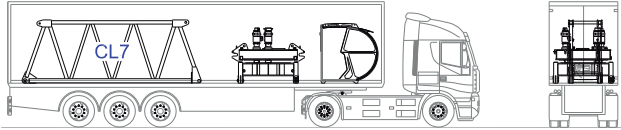
4



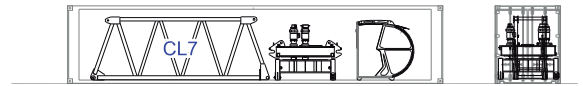
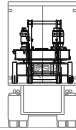
2xC1-CL4-2xCP3



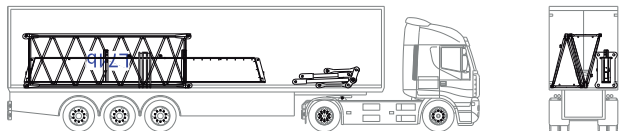
5



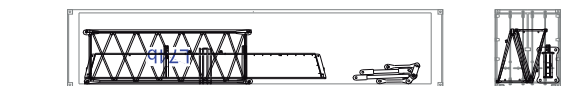
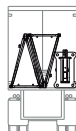
CL7-RI10-RS10-C1



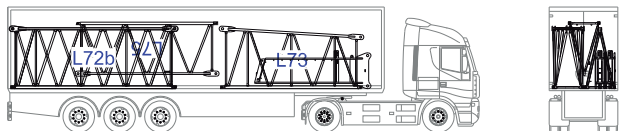
6



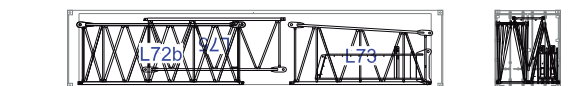
L42a-L42b-C1-P3



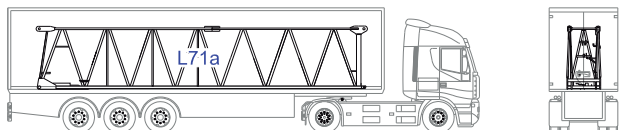
7



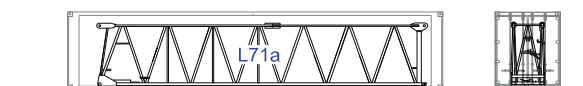
L72a-L72b-L73-L75-2xC1

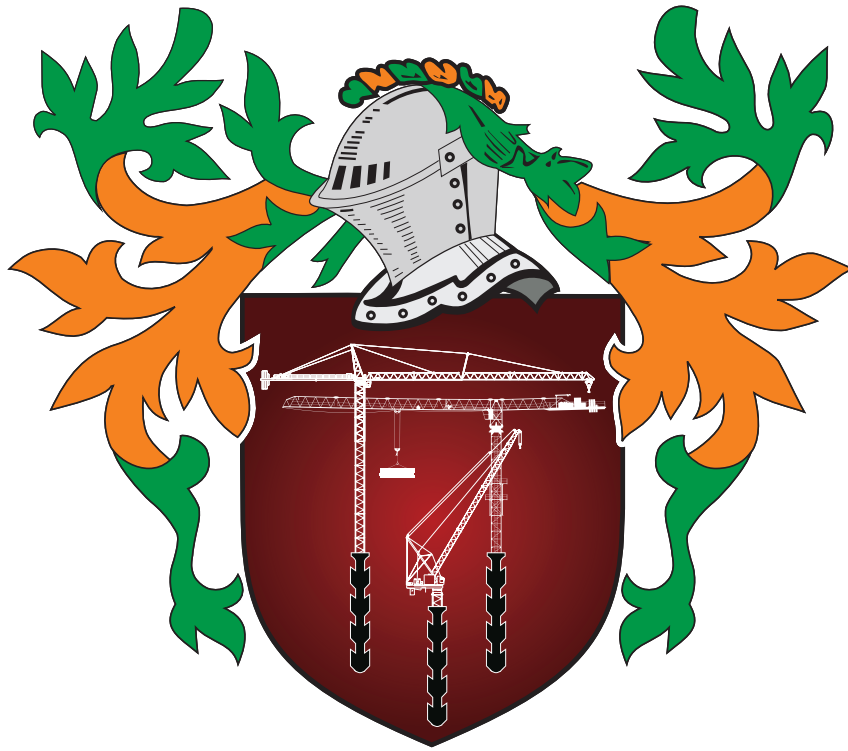


8



CL7-RI10-RS10-C1






STAFFORD SOIMA

TOWER CRANES

STAFFORD SOIMA, SA

Headquarters

 3620 S. 40th Street , Phoenix , AZ, 85040 USA

 +1 (480) 993 3302

Factory

 Zona Industrial de Canas de Senhorim - EN 234, 3525-040 Canas de Senhorim - Portugal

 +351 232 673 530  info@staffordsoima.com

 staffordsoima.com