

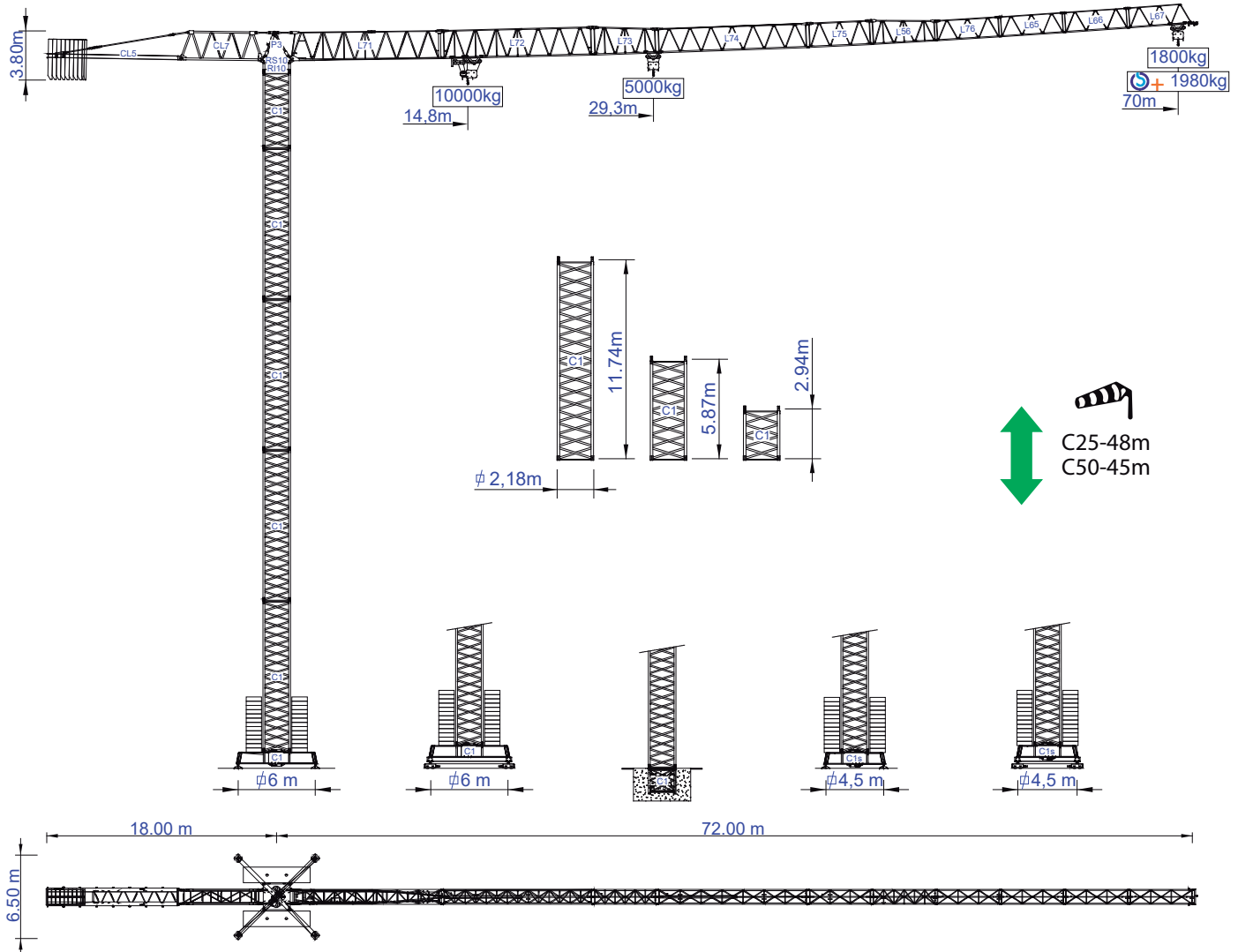


STAFFORD SOIMA

TOWER CRANES

SGT 7018TL

Data Sheet / Catalogo / Fiche Technique / Scheda Dati / Dentenblatt / техническая спецификация
Metric / Métrico / Métrique / Metrico / Metrisch / метрика



Headquarters

3620 S. 40th Street, Phoenix, AZ, 85040 USA
+1 (480) 993 3302

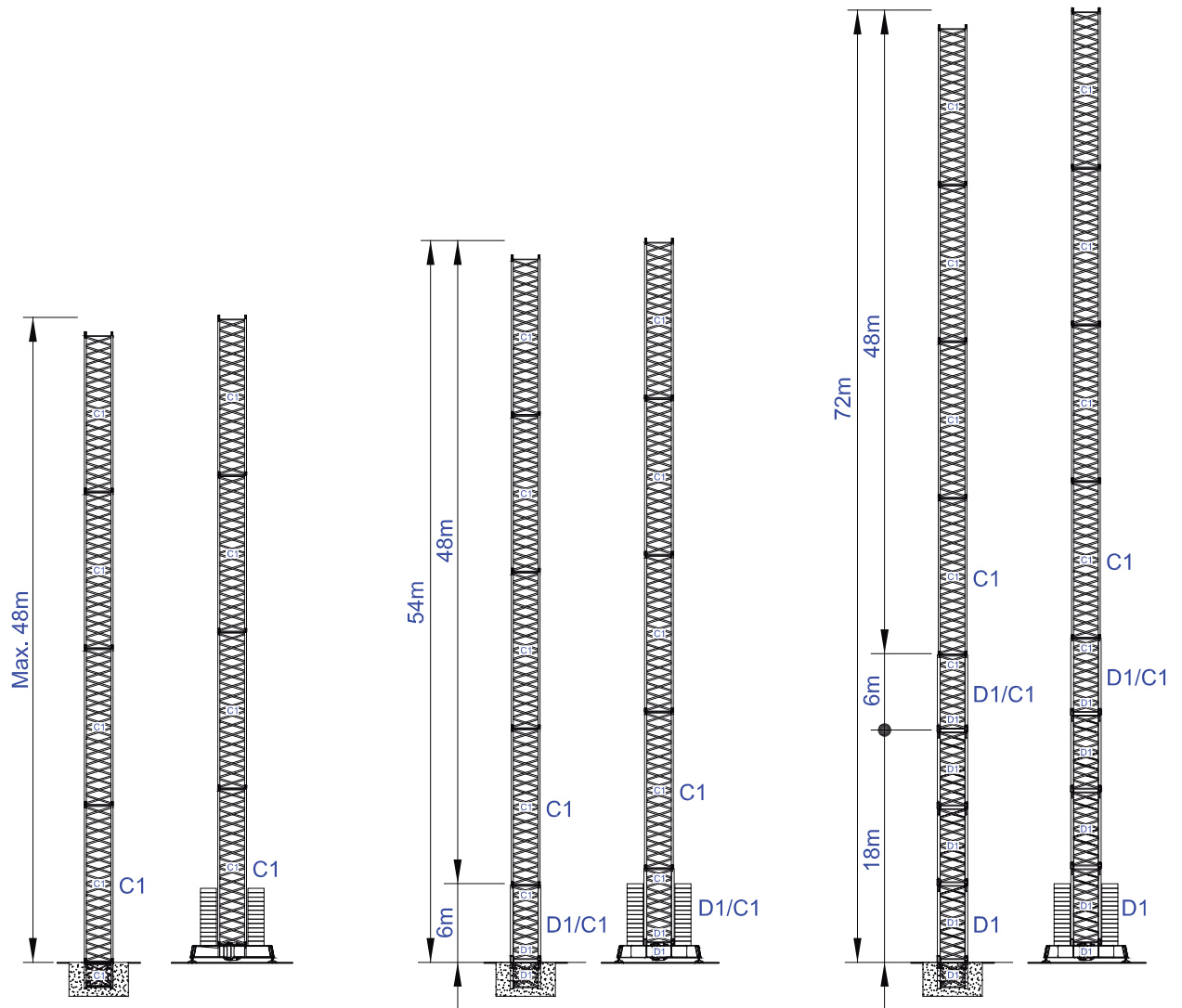
Factory

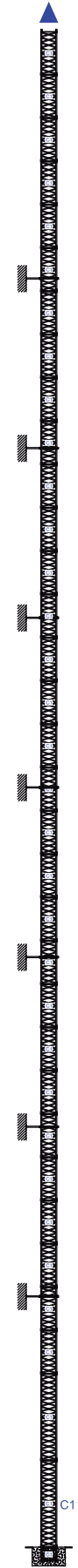
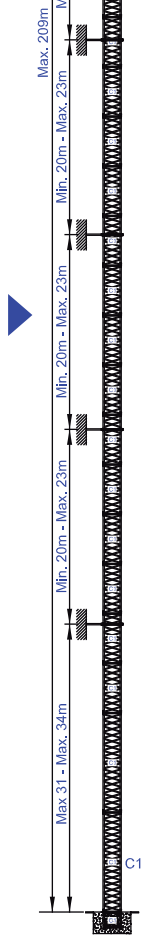
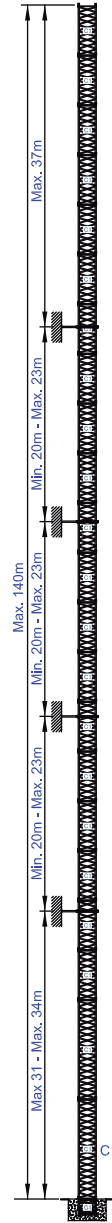
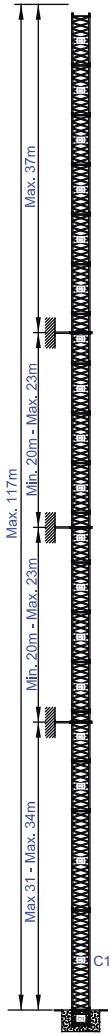
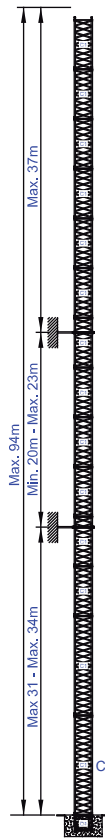
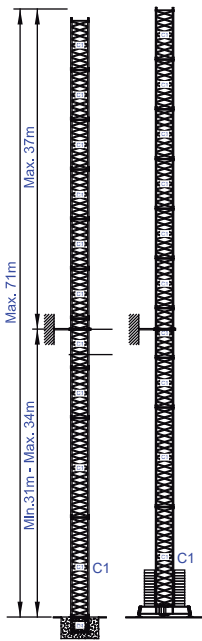
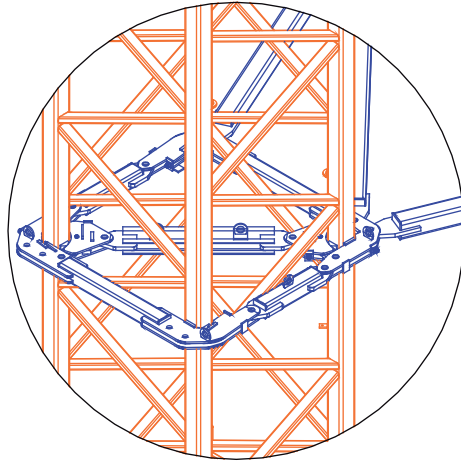
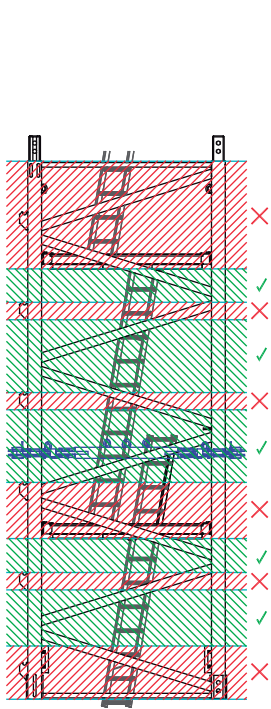
Zona Industrial de Canas de Senhorim - EN 234, 3525-040 Canas de Senhorim - Portugal
+351 232 673 530 info@soima.com

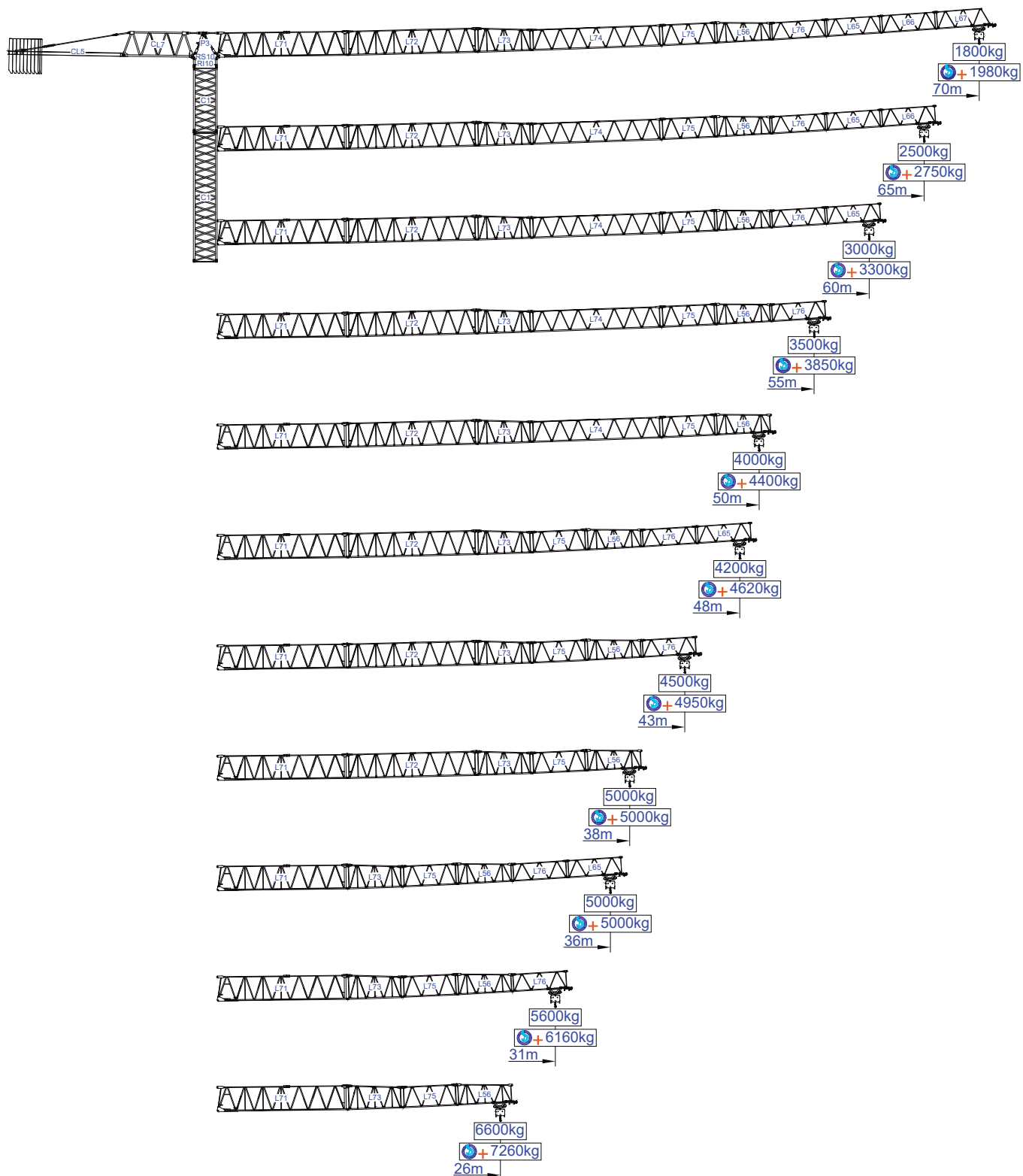
www.staffordsoima.com



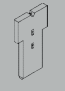



Empresa certificada no âmbito da Conceção, Fabrico e Serviço Pós-venda de Gruas Soima e componentes







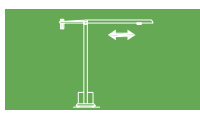



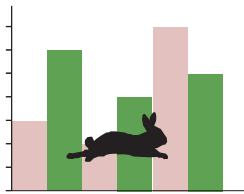


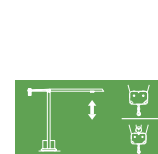





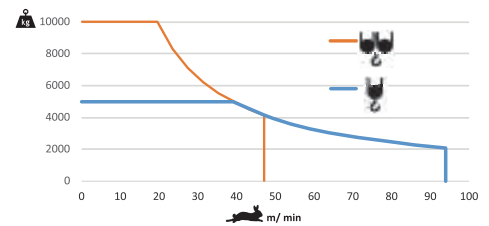
m																		m	
		10000kg	5000kg	16	21	26	31	36	38	43	48	50	55	60	65	70	kg		
70	18000kb 8x2000kg + 2x1000kg	14,8	29,3	5000	5000	5000	5000	3730	4130	3590	3160	3000	2680	2410	2190	1980			
				10000	7470	5840	4740	3950	3690	3150	2720	2560	2240	1970	1750	1540			
65	18000kb 8x2000kg + 2x1000kg	17,9	35,5	5000	5000	5000	5000	5000	5000	4460	3940	3750	3370	3040	2750				
				10000	9260	7290	5950	5010	4680	390	2400	3310	2930	2600	2310				
60	17000kb 8x2000kg + 1x1000kg	19,3	28,2	5000	5000	5000	5000	5000	5000	4840	4280	4090	3660	3300					
				10000	10000	7930	6490	5460	5120	4400	3840	3650	3220	28600					
55	17000kb 8x2000kg + 1x1000kg	20,2	40,0	5000	5000	5000	5000	5000	5000	5000	4510	4310	3850						
				11000	10580	8360	6850	5760	5400	4660	4070	3870	3410						
50	16000kb 7x2000kg + 2x1000kg	20,7	40,9	5000	5000	5000	5000	5000	5000	5000	4620	4400							
				10000	10000	8570	7030	5920	5560	4800	4180	3960							
48	14000kb 6x2000kg + 2x1000kg	20,7	41,0	5000	5000	5000	5000	5000	5000	5000	4620								
				10000	10000	8650	7100	5970	5610	4840	4180								
43	12000kb 5x2000kg + 2x1000kg	19,7	39,0	5000	5000	5000	5000	5000	5000	4950									
				10000	10000	8210	6720	5650	5300	4510									
38	11000kb 5x2000kg + 1x1000kg	19,2	38,0	5000	5000	5000	5000	5000	5000										
				10000	10000	7960	6520	5480	5060										
36	9000kb 4x2000kg + 1x1000kg	18,2	37,3	5000	5000	5000	5000	5000											
				10000	9980	7880	6450	5280											
31	8000kb 3x2000kg + 2x1000kg	18,5	36,6	5000	5000	5000	5000												
				10000	9820	7740	6160												
26	7000kb 3x2000kg + 1x1000kg	17,9	35,5	5000	5000	5000													
				10000	9520	7260													
m																			
																			


			A (mm)	B (mm)	C (mm)	kg	
Jib / Lança / Fleche / Braccio		L71	11970	1900	2900	9500	
/ Ausleger / кливер		L72	11970	1160	2260	2500	
		L73	5230	1160	2260	750	
		L74	11950	1160	1950	1400	
		L75	5200	1160	1950	500	
		L56	5200	1160	1930	590	
		L76	5180	1160	1610	370	
		L65	5110	1160	1610	330	
		L66	5110	1160	1610	300	
		L67	5110	1160	1610	300	
	Head turntable / Cabeçote / Pivot / Testa giradischi / Kopfplattenspieler		RS10 RI10	2620	2180	2150	8000
			P3	2430	1300	760	1270
		CL7	6470	1240	2285	2600	
Counter-jib / Contra lança / Contre-flèche		CL5	10550	1500	500	3720	
Counterweight / Contrapeso / Contrepoids / Gegengewicht / Противовес		CP2	1160	330	3140	8x2000 16000	
		CP3	1160	165	3140	2x1000 2000	
Tower section / torre / Coupe tour / Sezione torre / Turmabschnitt / Секция башни		C1	12000	2180	2180	4200	
		C1	6130	2180	2180	2200	
		C1	3195	2180	2180	1200	
Climbing tower section		C1	3195	2250	2250	1360	
Foundation anchor / Tramo encastrar /		C1	2280	2150	2150	850	
Base Chassis		C1	8127	800	1370	4600	
			4200	380	1370	2x1700 3400	
TOTAL						8000	
Base Chassis		C1s	6605	800	1370	3420	
			3160	380	1370	2x1840 3680	
TOTAL						7100	



		
	0 a 1 r.p.m.	3x5 daN.m
	0 a 60 m/min	5,5 kW
	0-10 m/min	2x4 kW

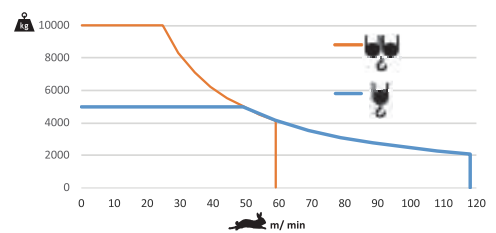



		
	0 a 94 m/min	0 a 47 m/min
		37 kW






	55 kVA
	400 V +- 5% (50/60 Hz)

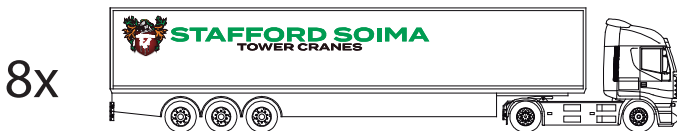
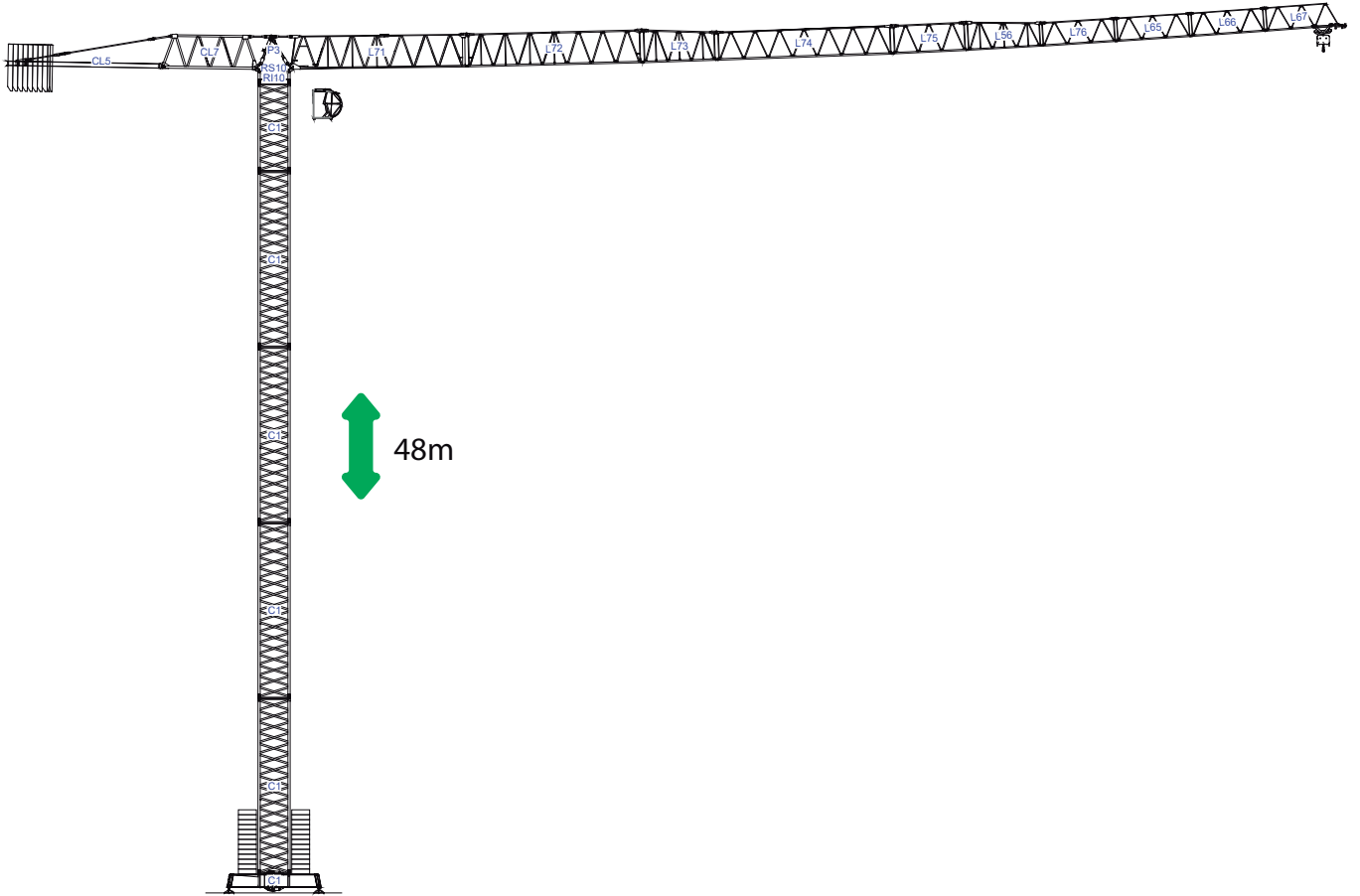
		
	0 a 118 m/min	0 a 59 m/min
		45 kW



	65 kVA
	400 V +- 5% (50/60 Hz)

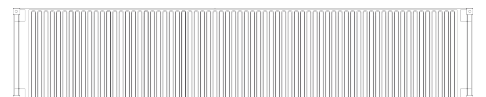
Max height of hoist

 (H)Max. 66m + 
 (H)Max. 132m



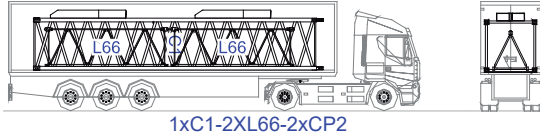
/

8x

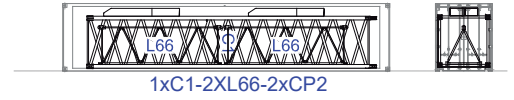


40' High Cube

1

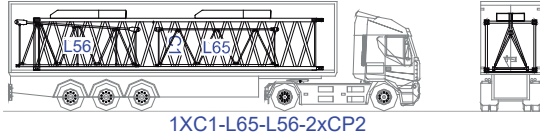


1xC1-2XL66-2xCP2

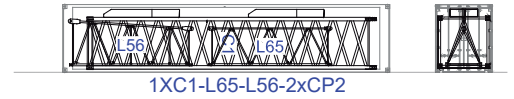


1xC1-2XL66-2xCP2

2

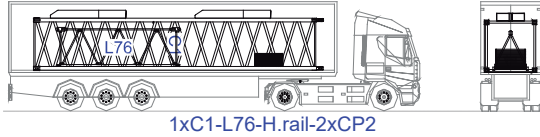


1XC1-L65-L56-2xCP2

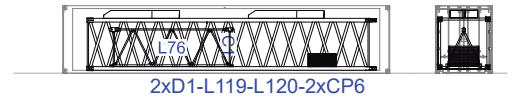


1XC1-L65-L56-2xCP2

3

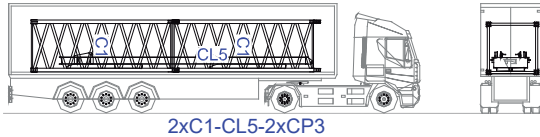


1xC1-L76-H.rail-2xCP2

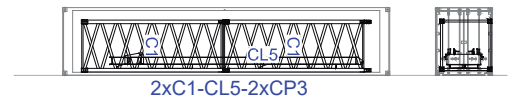


2xD1-L119-L120-2xCP6

4

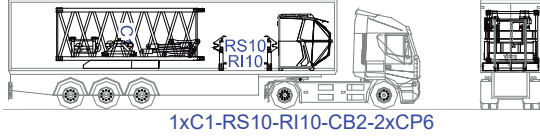


2xC1-CL5-2xCP3

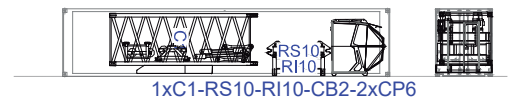


2xC1-CL5-2xCP3

5

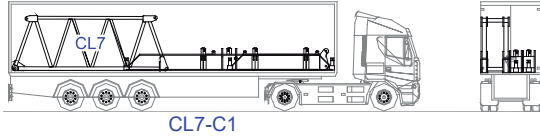


1xC1-RS10-RH10-CB2-2xCP6

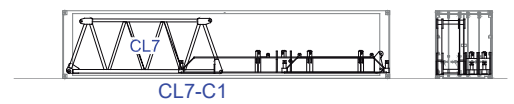


1xC1-RS10-RH10-CB2-2xCP6

6

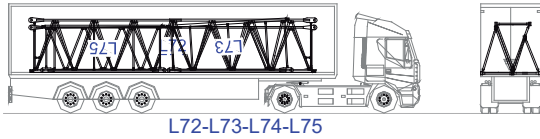


CL7-C1

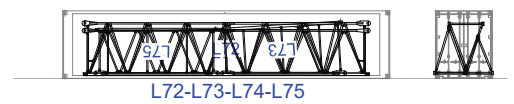


CL7-C1

7

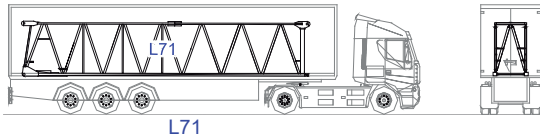


L72-L73-L74-L75

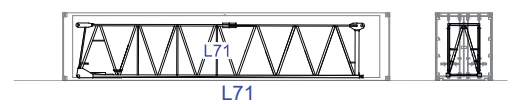


L72-L73-L74-L75

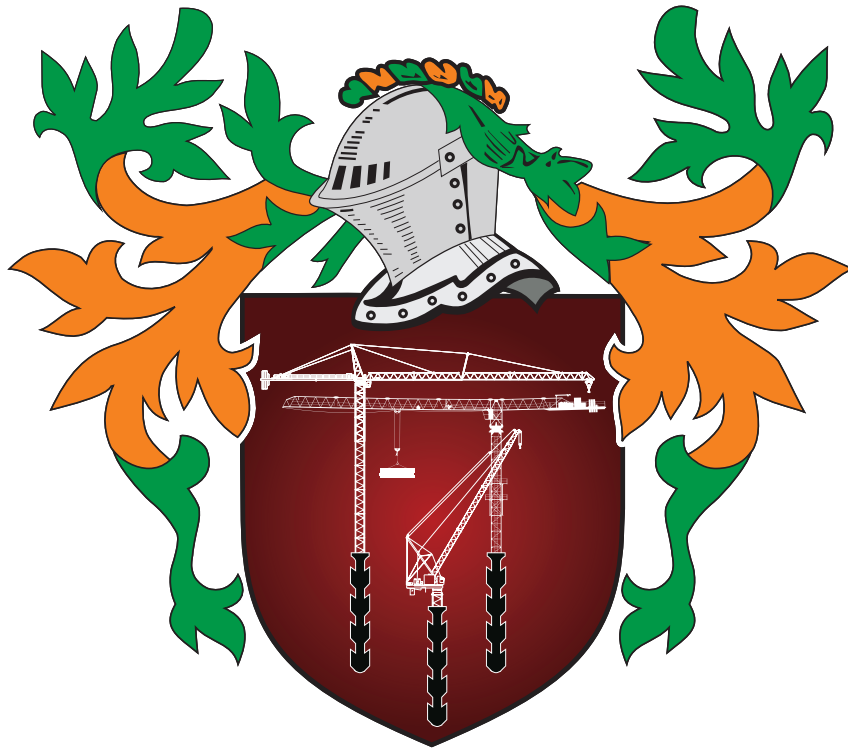
8



L71



L71




STAFFORD SOIMA

TOWER CRANES

STAFFORD SOIMA, SA

Headquarters

 3620 S. 40th Street , Phoenix , AZ, 85040 USA

 +1 (480) 993 3302

Factory

 Zona Industrial de Canas de Senhorim - EN 234, 3525-040 Canas de Senhorim - Portugal

 +351 232 673 530  info@staffordsoima.com

 staffordsoima.com