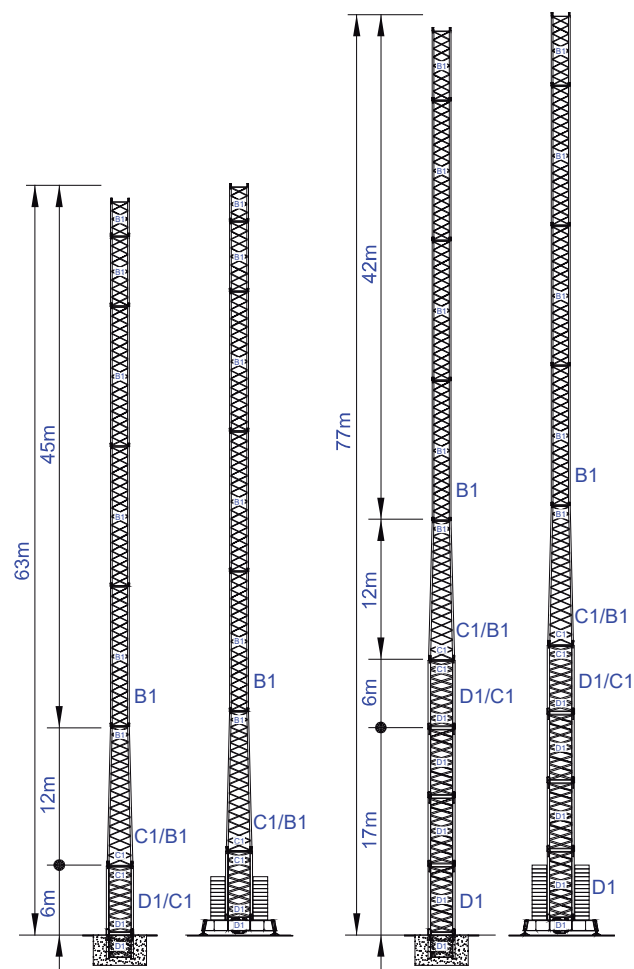
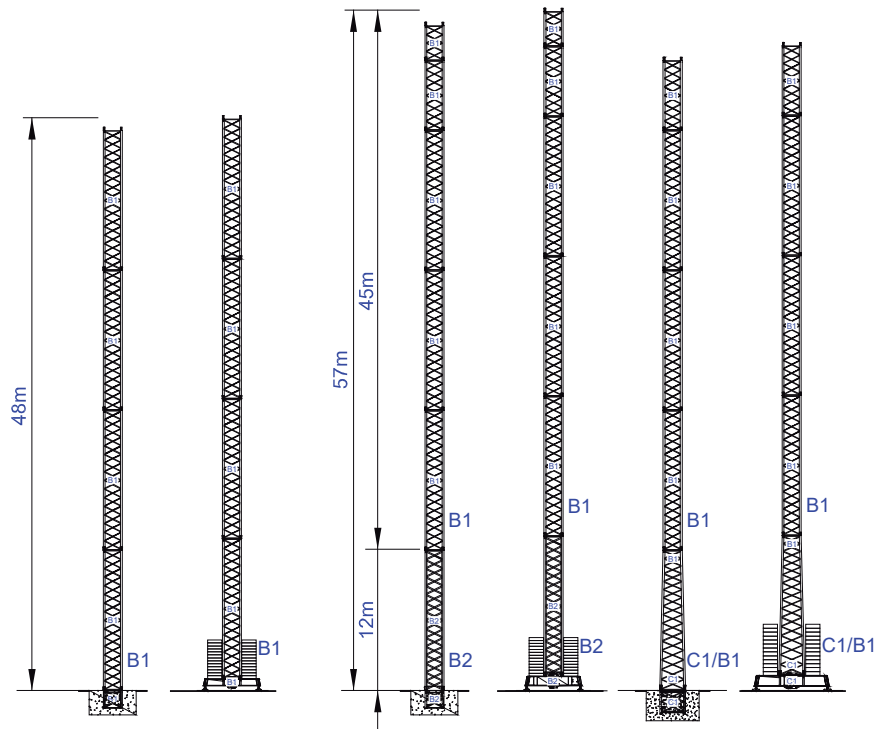
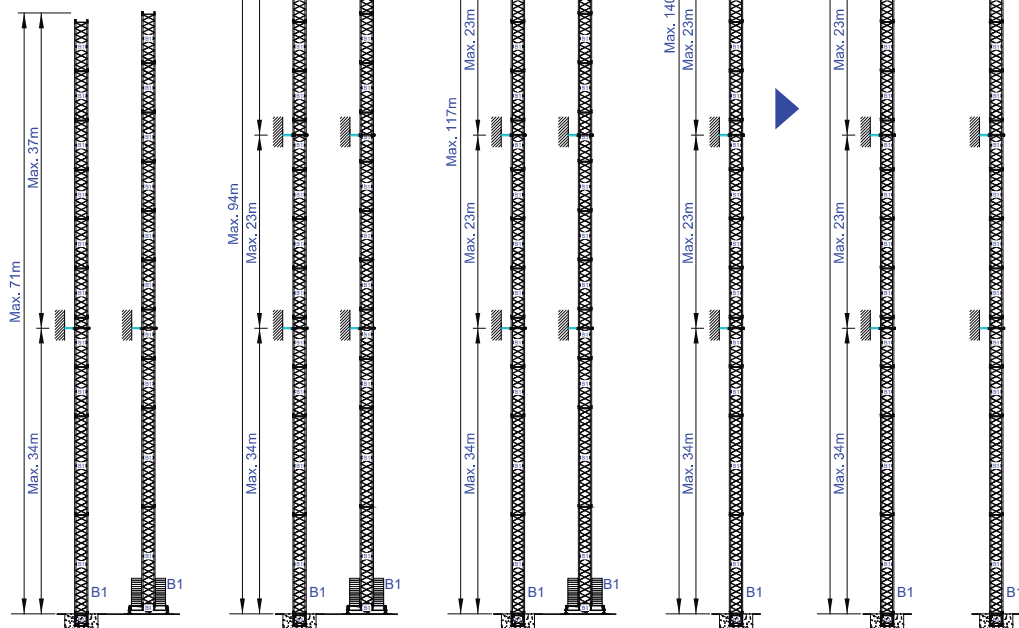
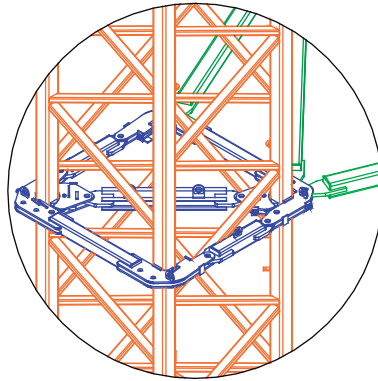
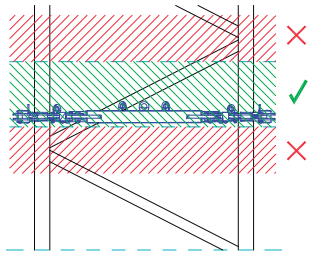




Metric / Métrico / Métrique / Metrico / Metrisch / метрика





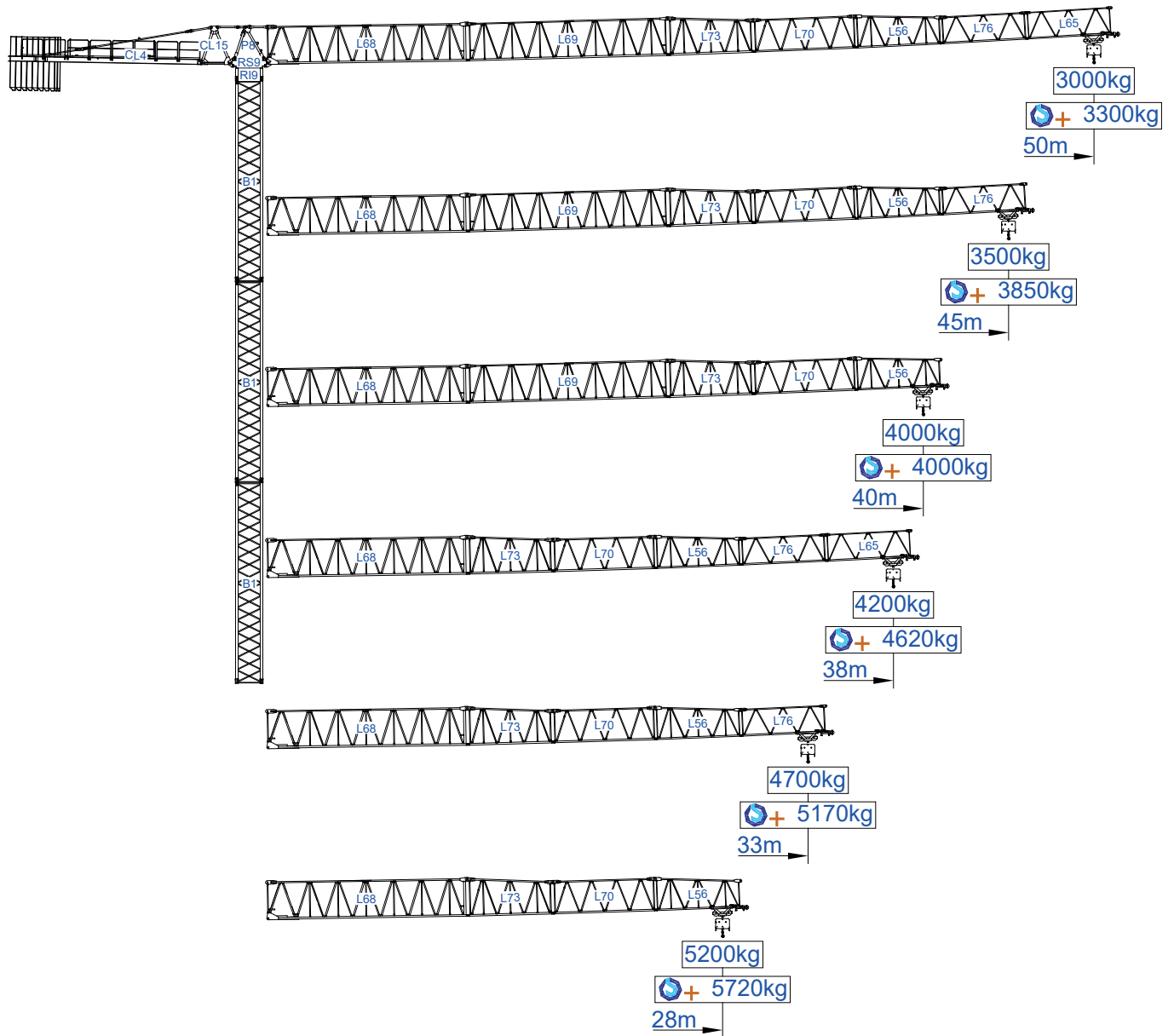


C25

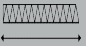
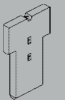






STAFFORD SOIMA
TOWER CRANES

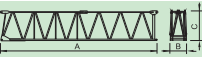
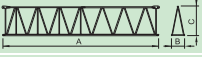

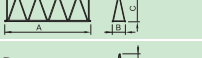
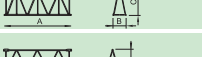


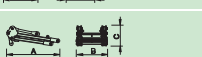
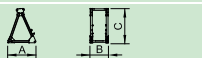
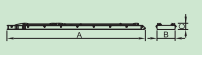
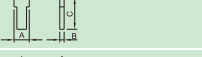



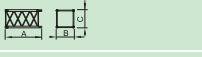


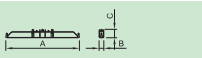
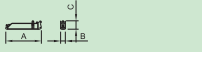







SGT 5030TL








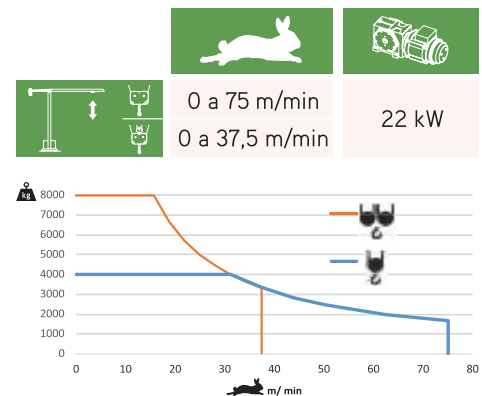
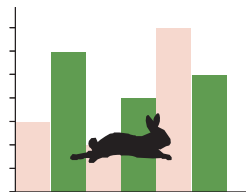



 m															
		8000kg	4000kg	10	15	18	23	28	33	38	40	45	50	m	
50	18000kg 8x2000kg + 2x1000kg	21,7	40,2	4000	4000	4000	4000	4000	4000	4000	4000	4000	3750	3300	kg
				8000	8000	8000	8000	6500	5400	4590	4320	3750	3300		
45	18000kg 8x2000kg + 2x1000kg	22,2	41,1	4000	4000	4000	4000	4000	4000	4000	4000	4000	3850		
				8000	8000	8000	8000	6660	5530	4700	4430	3850			
40	16000kg 7x2000kg + 2x1000kg	22,2	40,0	4000	4000	4000	4000	4000	4000	4000	4000	4000			
				8000	8000	8000	8000	6610	5500	4680	4400				
38	13000kg 6x2000kg + 1x1000kg	22,1	38,0	4000	4000	4000	4000	4000	4000	4000					
				8000	8000	8000	8000	6550	5430	4620					
33	12000kg 5x2000kg + 2x1000kg	21,3	33,0	4000	4000	4000	4000	4000	4000						
				8000	8000	8000	7760	6230	5170						
28	10000kg 4x2000kg + 2x1000kg	19,9	28,0	4000	4000	4000	4000	4000							
				8000	8000	8000	7130	5720							
		m													

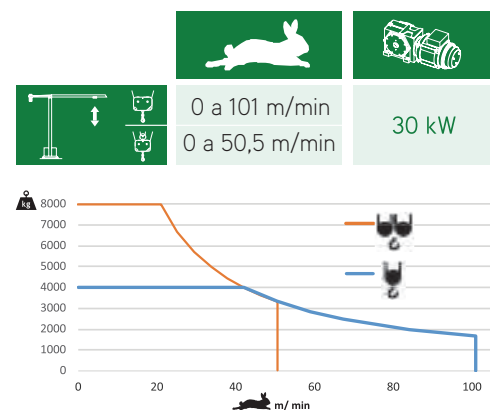



			A (mm)	B (mm)	C (mm)	kg(± 5%)
Jib / Lança / Fleche / Braccio		L68	11970	1900	2300	5050
/ Ausleger / кливер		L69	11960	1160	2260	1650
		L73	5230	1160	2260	750
		L70	6200	1160	1950	680
		L56	5200	1160	1930	590
		L76	5180	1160	1610	370
		L65	5110	1160	1610	330
		L65	5110	1160	1610	330
Head turntable / Cabeçote / Pivot		RS9	2505	1700	1950	4650
/ Testa giradischi / Kopfplattenspieler		RI9	2505	1700	1950	4650
		P8	2230	1300	820	830
Counter-jib / Contra lança / Contre-flèche		CL15	1845	1220	2260	750
/ Gegenausleger / Контр-стрела		CL4	11400	1500	500	4000
		CL4	11400	1500	500	4000
Counterweight / Contrapeso / Contrepoids		CP2	1160	330	3140	8x2000 16000
/ Gegengewicht / Противовес		CP3	1160	165	3140	2x1000 2000
		CP3	1160	165	3140	2x1000 2000
Tower section / torre / Coupe tour / Sezione torre		B1	12000	1620	1620	3450
		B1	6130	1620	1620	1800
		B1	3195	1620	1620	1070
Climbing tower section		B1	3195	1830	1830	1100
Foundation anchor / Tramo encastrar /		B1	1775	1600	1600	650
Base Chassis		B1	6620	500	1040	2190
		B1	3120	340	1040	2x980 1960
TOTAL						4150
Base Chassis		B1s	5620	500	1040	1800
		B1s	2710	340	1040	2x900 1800
TOTAL						3600

		
	0 a 1 r.p.m.	2x6,5 daN.m
	0 a 60 m/min	5,5 kW
	0-10 m/min	2x4 kW





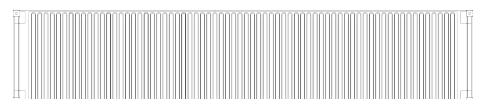
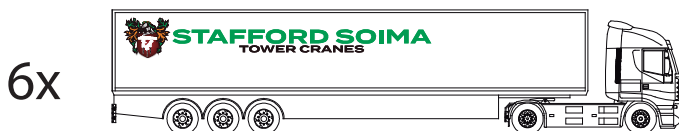
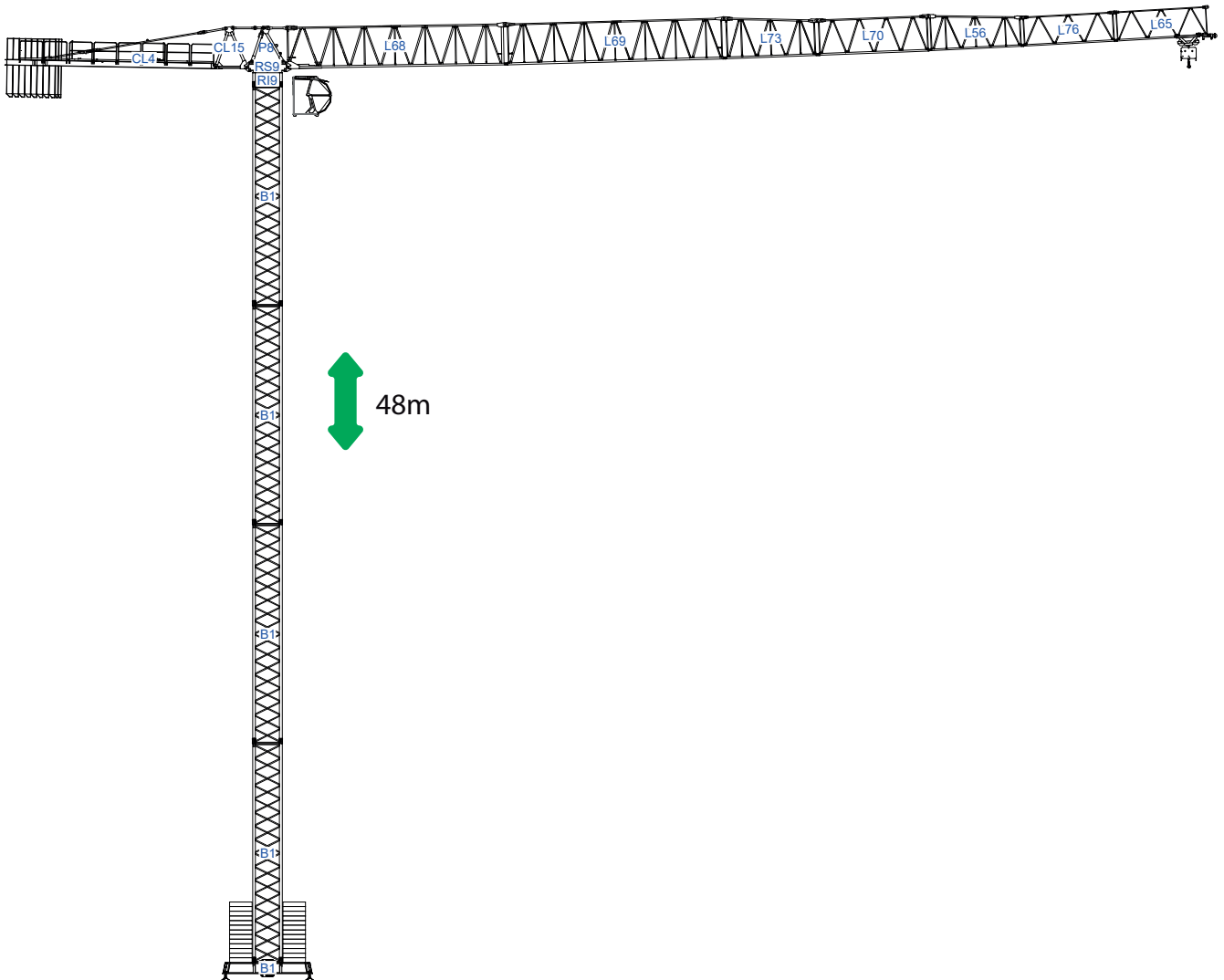
	48 kVA
	400 V +- 5% (50/60 Hz)



	58 kVA
	400 V +- 5% (50/60 Hz)

Max height of hoist

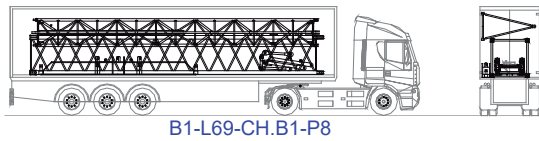
 (H)Max. 54m
 (H)Max. 108m



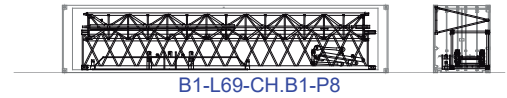
STAFFORD SOIMA
TOWER CRANES

SGT 5030TL

1

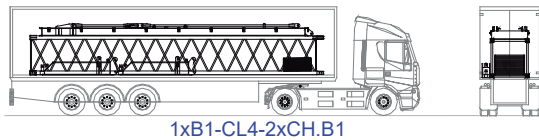


B1-L69-CH.B1-P8

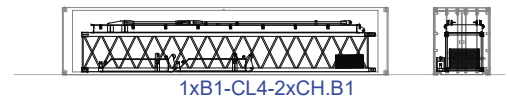


B1-L69-CH.B1-P8

2

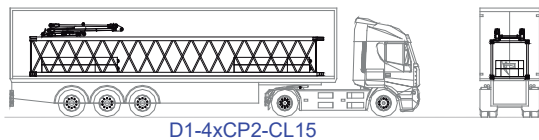


1xB1-CL4-2xCH.B1

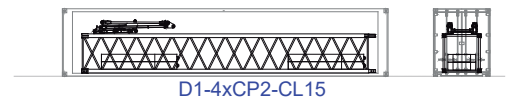


1xB1-CL4-2xCH.B1

3

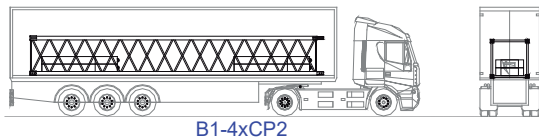


D1-4xCP2-CL15

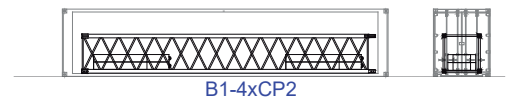


D1-4xCP2-CL15

4

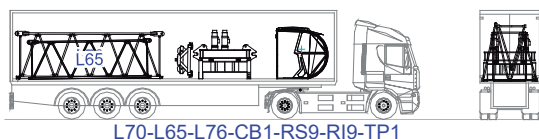


B1-4xCP2

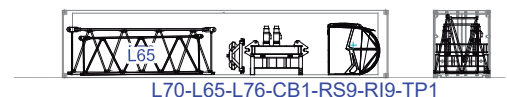


B1-4xCP2

5

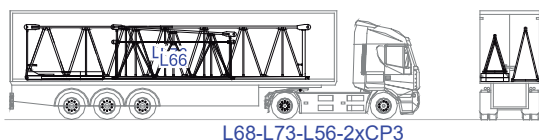


L70-L65-L76-CB1-RS9-RI9-TP1



L70-L65-L76-CB1-RS9-RI9-TP1

6



L68-L73-L56-2xCP3

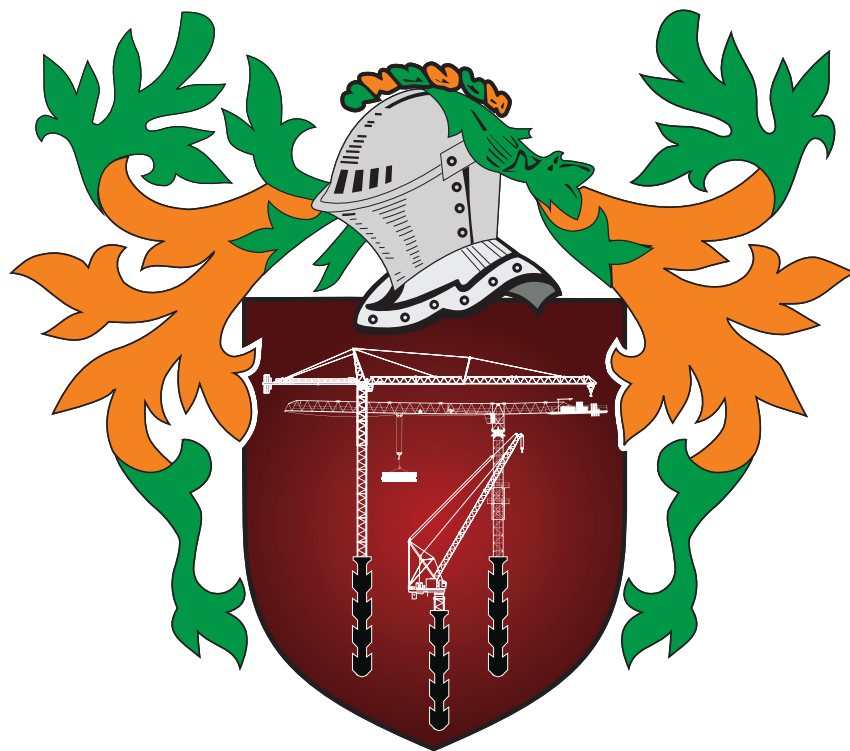


L68-L73-L56-2xCP3



[illegible]

[illegible]



STAFFORD SOIMA

TOWER CRANES

STAFFORD SOIMA, SA

Headquarters

📍 3620 S. 40th Street , Phoenix , AZ, 85040 USA
📞 +1 (480) 993 3302

Factory

📍 Zona Industrial de Canas de Senhorim - EN 234, 3525-040 Canas de Senhorim - Portugal
📞 +351 232 673 530 ✉ info@staffordsoima.com

🌐 staffordsoima.com