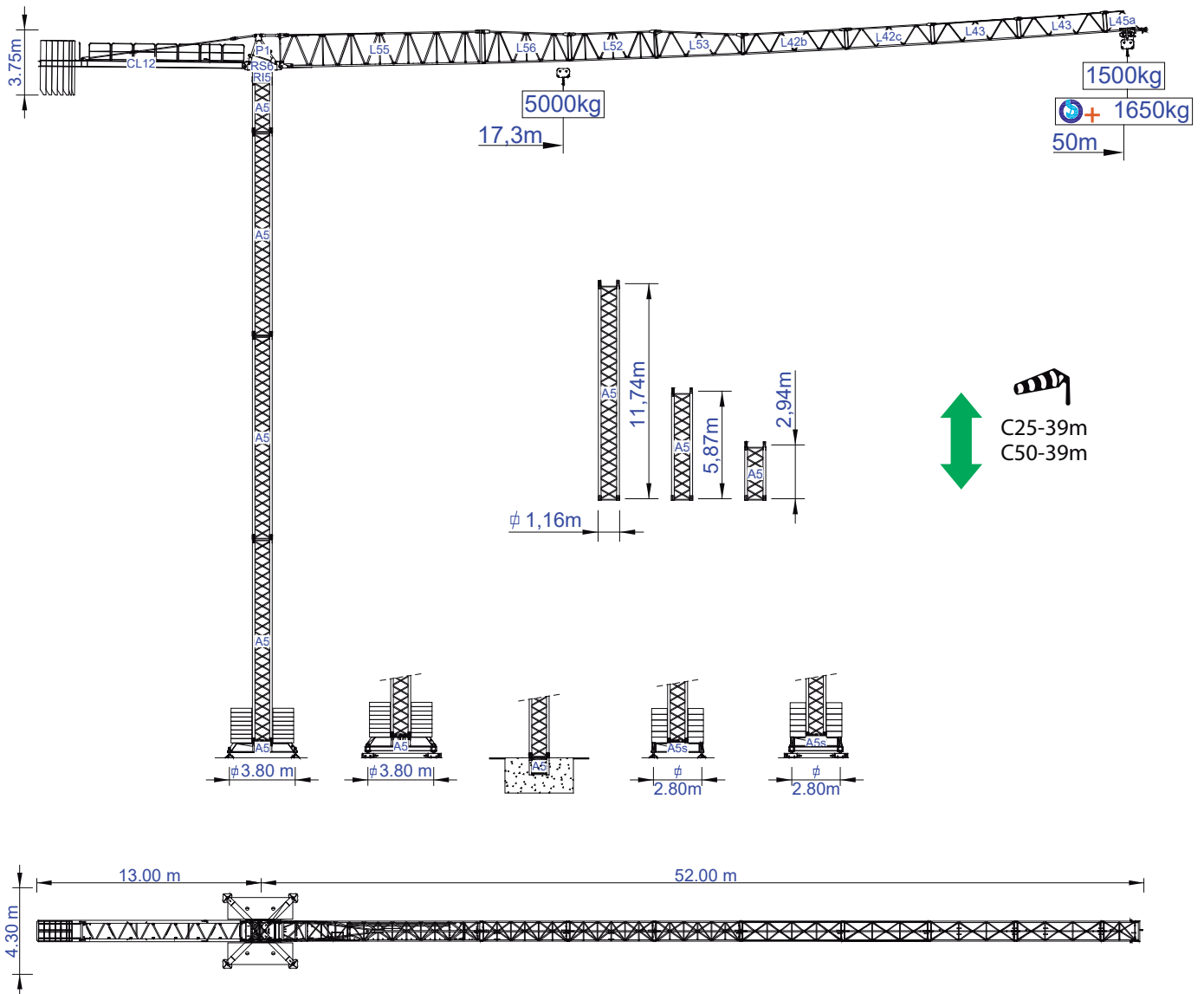




STAFFORD SOIMA TOWER CRANES

SGT 5015TL

Data Sheet / Catalogo / Fiche Technique / Scheda Dati / Dentenblatt / техническая спецификация
Metric / Métrico / Métrique / Metrico / Metrisch / метрика



Headquarters

3620 S. 40th Street, Phoenix, AZ, 85040 USA
+1 (480) 993 3302

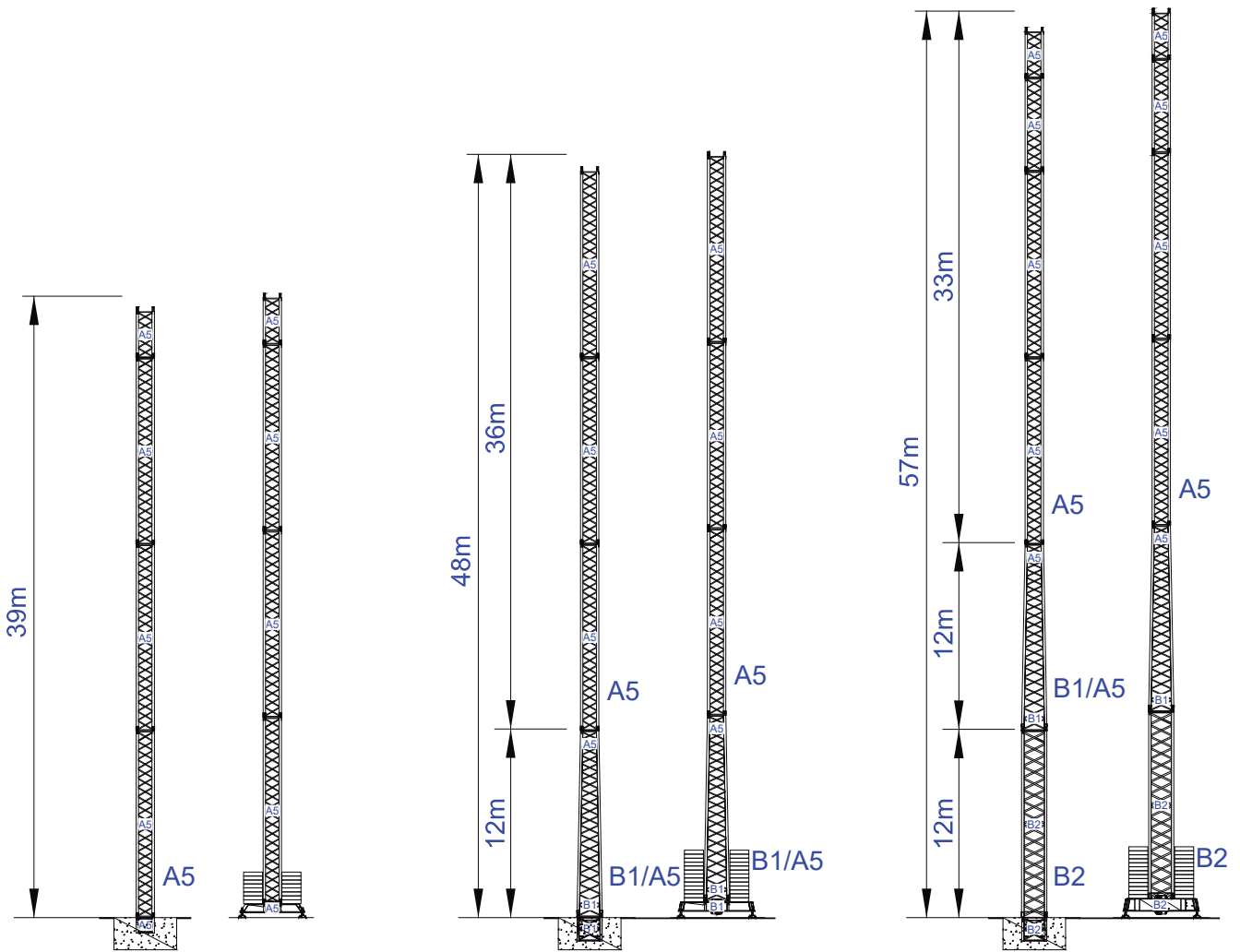
Factory

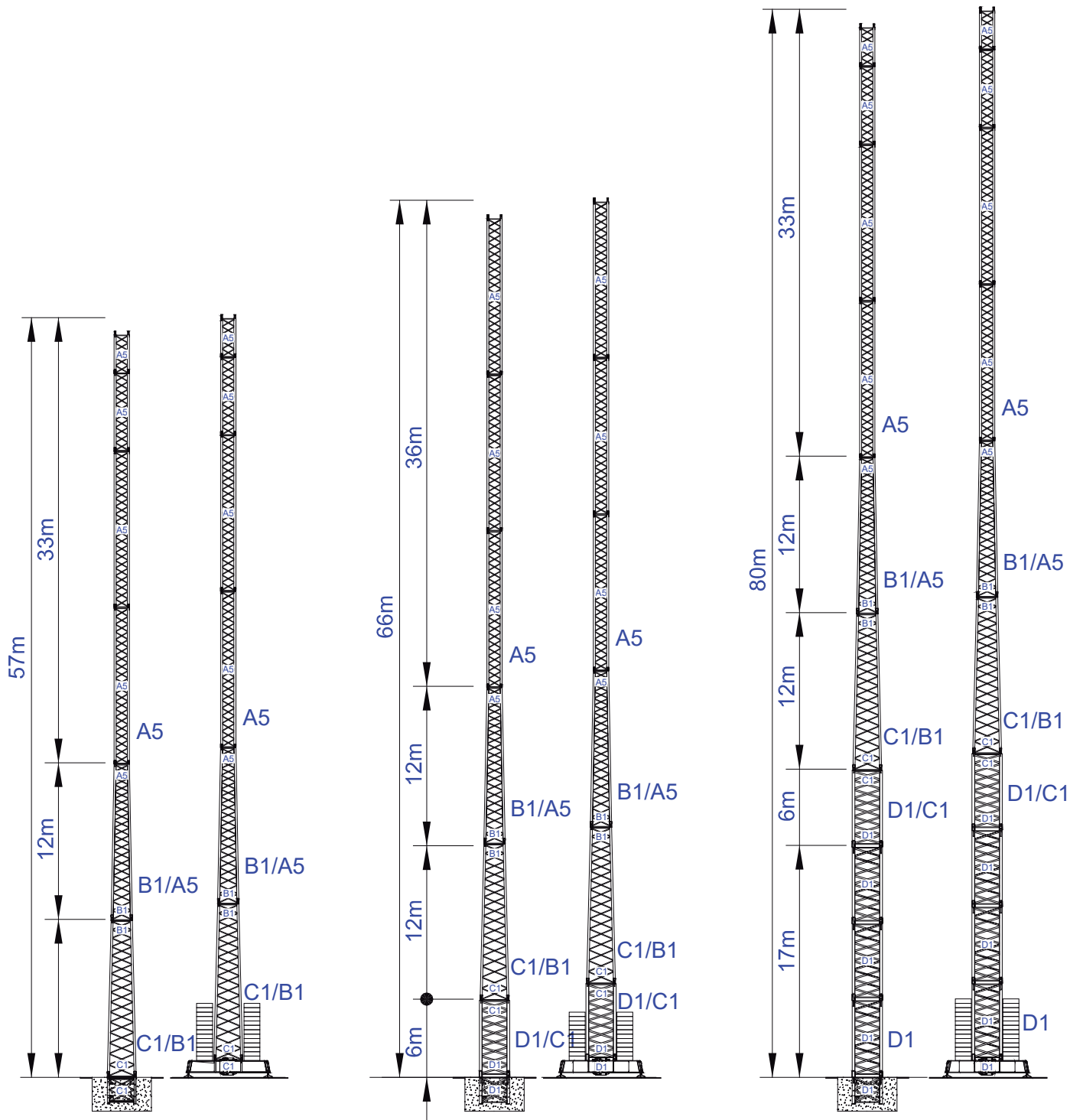
Zona Industrial de Canas de Senhorim - EN 234, 3525-040 Canas de Senhorim - Portugal
+351 232 673 530 info@staffordsoima.com

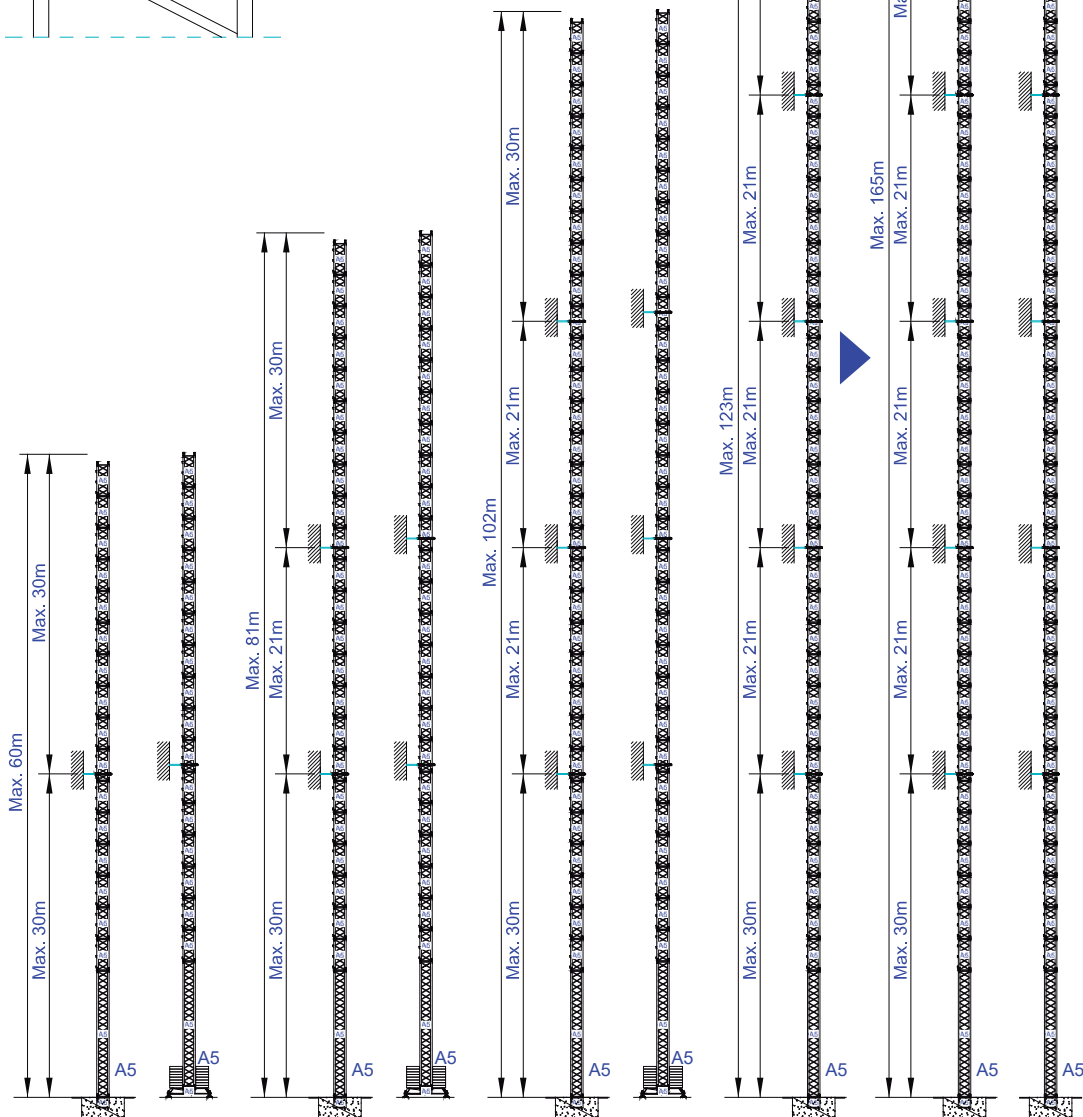
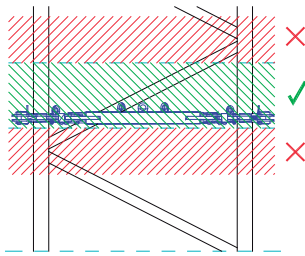
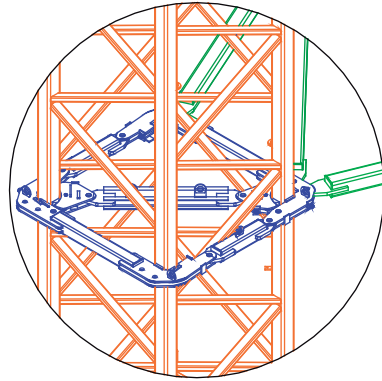
www.staffordsoima.com

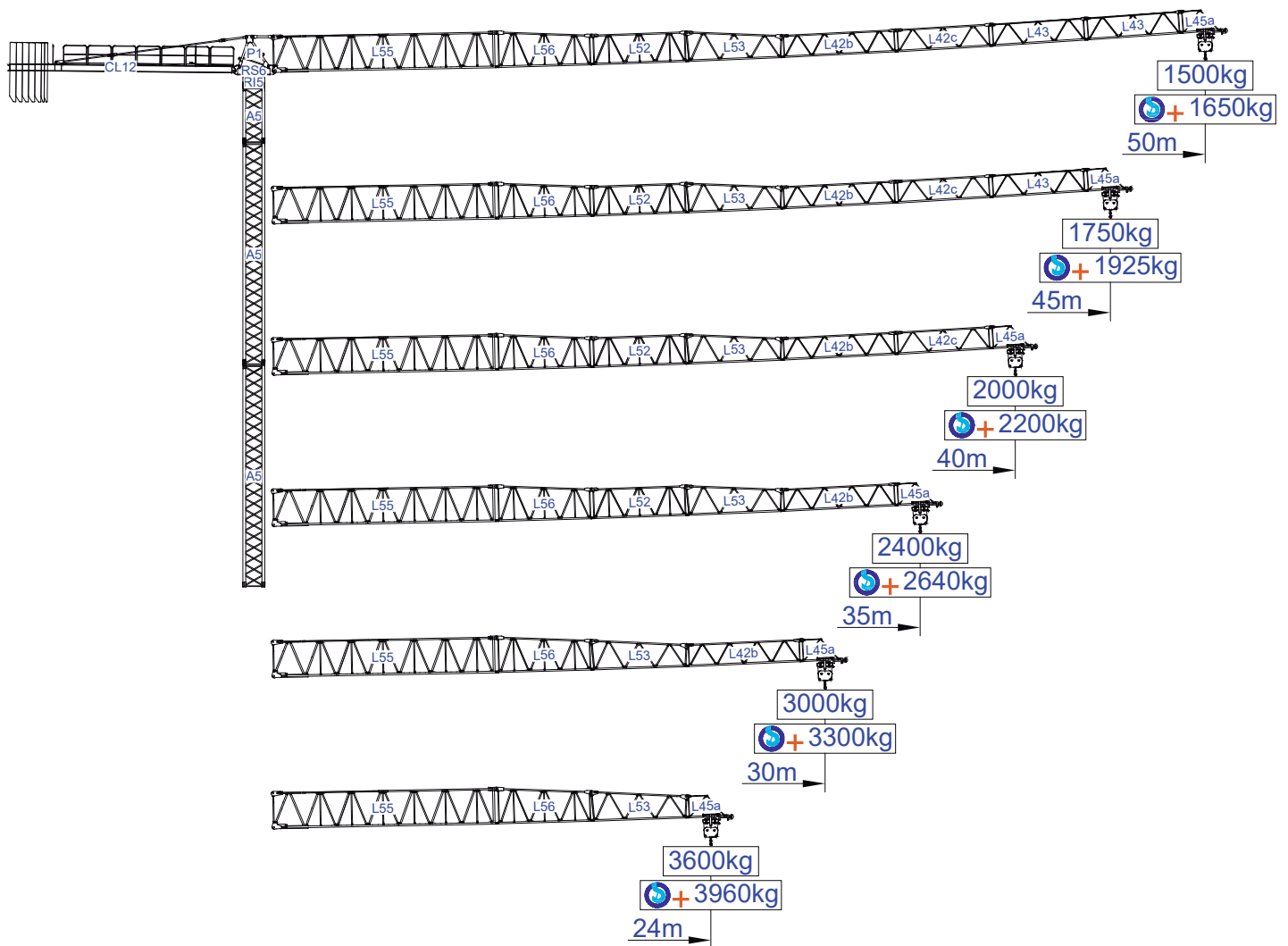


Empresa certificada no âmbito da Conceção, Fabrico e Serviço Pós-venda de Gruas Soíma e componentes

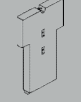






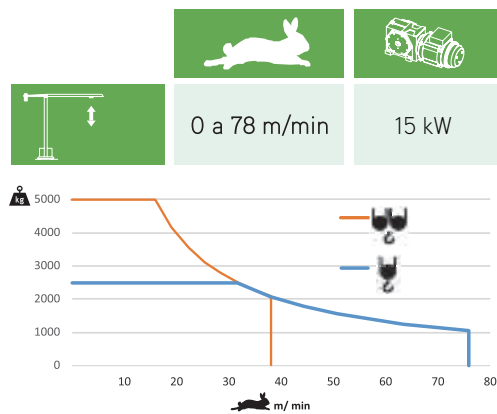
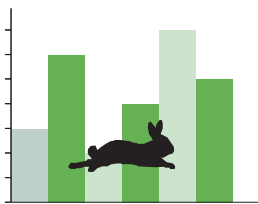




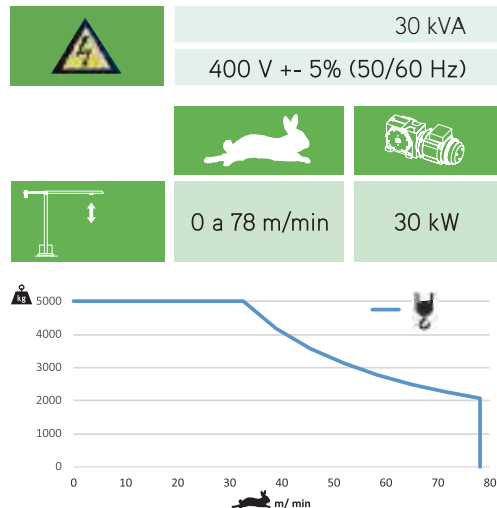


m				10	15	18	24	30	35	40	45	50	m
		5000 kg	2500 kg										
50	12000kg 5x2000kg + 2x1000kg	17,6	32,8	2500	2500	2500	2500	2500	2500	2170	1880	1650	kg
				5000	5000	5000	3920	3050	2550	2170	1880	1650	
45	11000kg 5x2000kg + 1x1000kg	17,9	33,4	2500	2500	2500	2500	2500	2500	2220	1930		
				5000	5000	5000	4000	3110	2600	2220	1930		
40	10000kg 4x2000kg + 2x1000kg	17,8	33,1	2500	2500	2500	2500	2500	2500	2200			
				5000	5000	5000	3960	3080	2580	2200			
35	9000kg 4x2000kg + 1x1000kg	18,2	33,8	2500	2500	2500	2500	2500	2500				
				5000	5000	5000	4050	3150	2640				
30	8000kg 3x2000kg + 2x1000kg	18,9	35,2	2500	2500	2500	2500	2500					
				5000	5000	5000	4240	3300					
24	6000kg 2x2000kg + 2x1000kg	17,8	33,1	2500	2500	2500	2500						
				5000	5000	5000	3960						
m													

			A (mm)	B (mm)	C (mm)	kg (±5%)
Jib / Lança / Fleche / Braccio		L55	11950	1210	2600	3100
/ Ausleger / кливер		L56	5200	1160	1930	590
		L52	5200	1160	1650	535
		L53	5200	1160	1650	510
		L42b	6080	1160	1210	520
		L42c	5180	1160	1210	370
		L43	5100	1160	1210	2x260 520
		L45a	2100	1160	1210	120
	Head turntable		RS6 RI5	2250	1350	2050
		P1	1660	1220	1720	720
Counter-jib / Contra lança / Contre-flèche		CL12	12000	1250	560	2560
Counterweight / Contrapeso / Contrepoids / Gegengewicht / Противовес		CP2	1160	330	3140	5x2000 10000
		CP3	1160	165	3140	2x1000 2000
Tower section / torre / Coupe tour / Sezione torre / Turmabschnitt / Секция башни		A5	11985	1160	1160	3080
		A5	6075	1160	1160	1660
		A5	3120	1160	1160	990
Climbing tower section		A5	3090	1385	1385	1040
Foundation anchor / Tramo encastrar /		A5	1275	1160	1160	450
Base Chassis		A5	5530	500	820	1250
			2270	360	820	2x635 1270
TOTAL						2520
Base Chassis		A5s	4110	500	820	1150
			1955	360	820	2x580 1160
TOTAL						2310

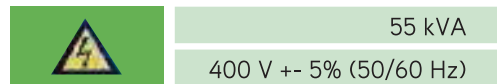


	0 a 1 r.p.m.
	2x4 daN.m
	0 a 60 m/min
	3 kW
	15 m/min
	2x3 kW

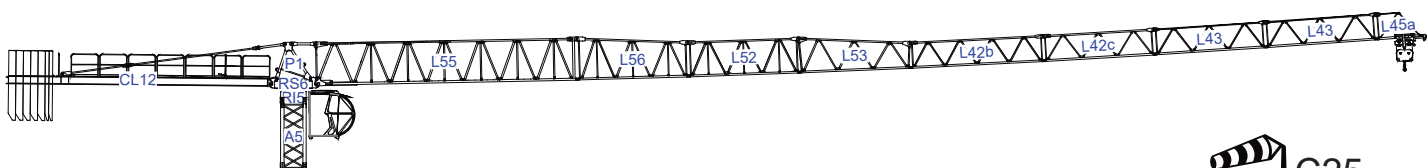


Max height of hoist

(H)Max. 132m +



Transport / Transporte / Transport / Trasporto / Transport / Транспорт

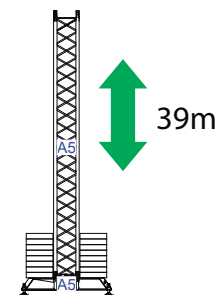
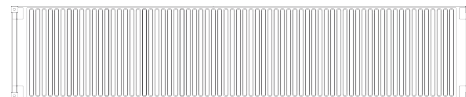


C25

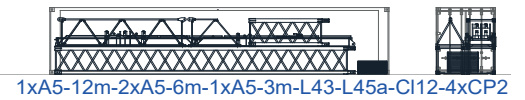
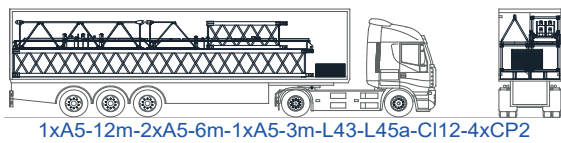
3x



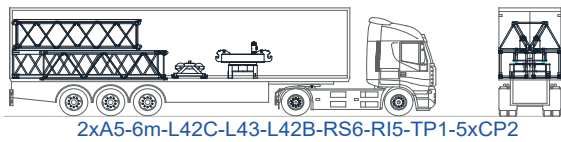
/ 3x



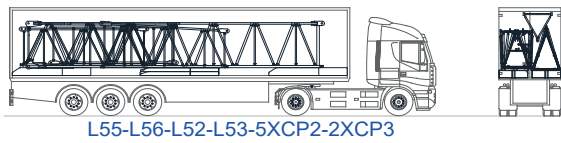
1

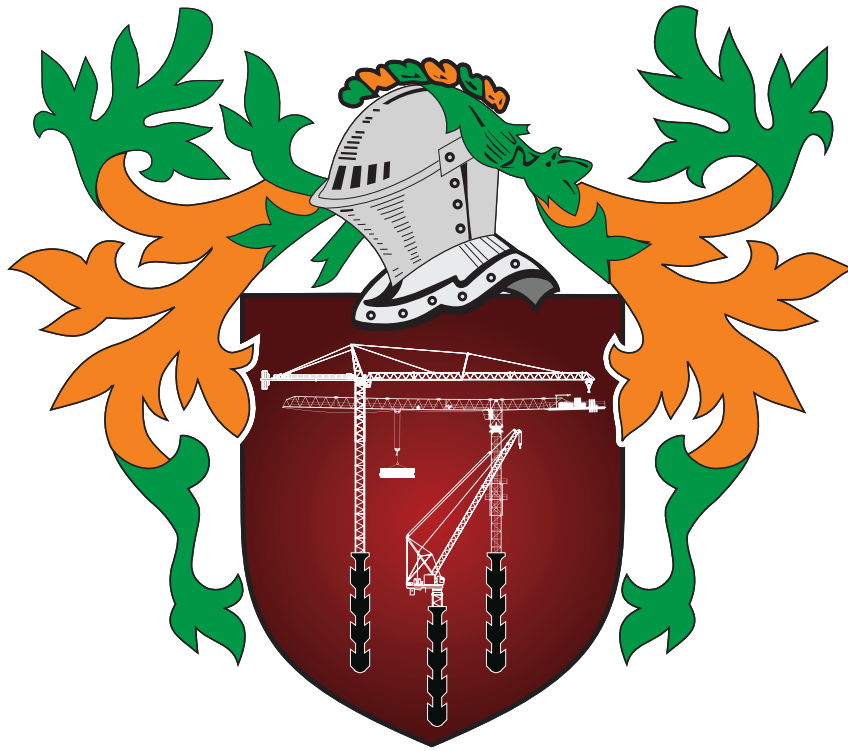


2



3






STAFFORD SOIMA

TOWER CRANES

STAFFORD SOIMA, SA

Headquarters

 3620 S. 40th Street , Phoenix , AZ, 85040 USA

 +1 (480) 993 3302

Factory

 Zona Industrial de Canas de Senhorim - EN 234, 3525-040 Canas de Senhorim - Portugal

 +351 232 673 530  info@staffordsoima.com

 staffordsoima.com