

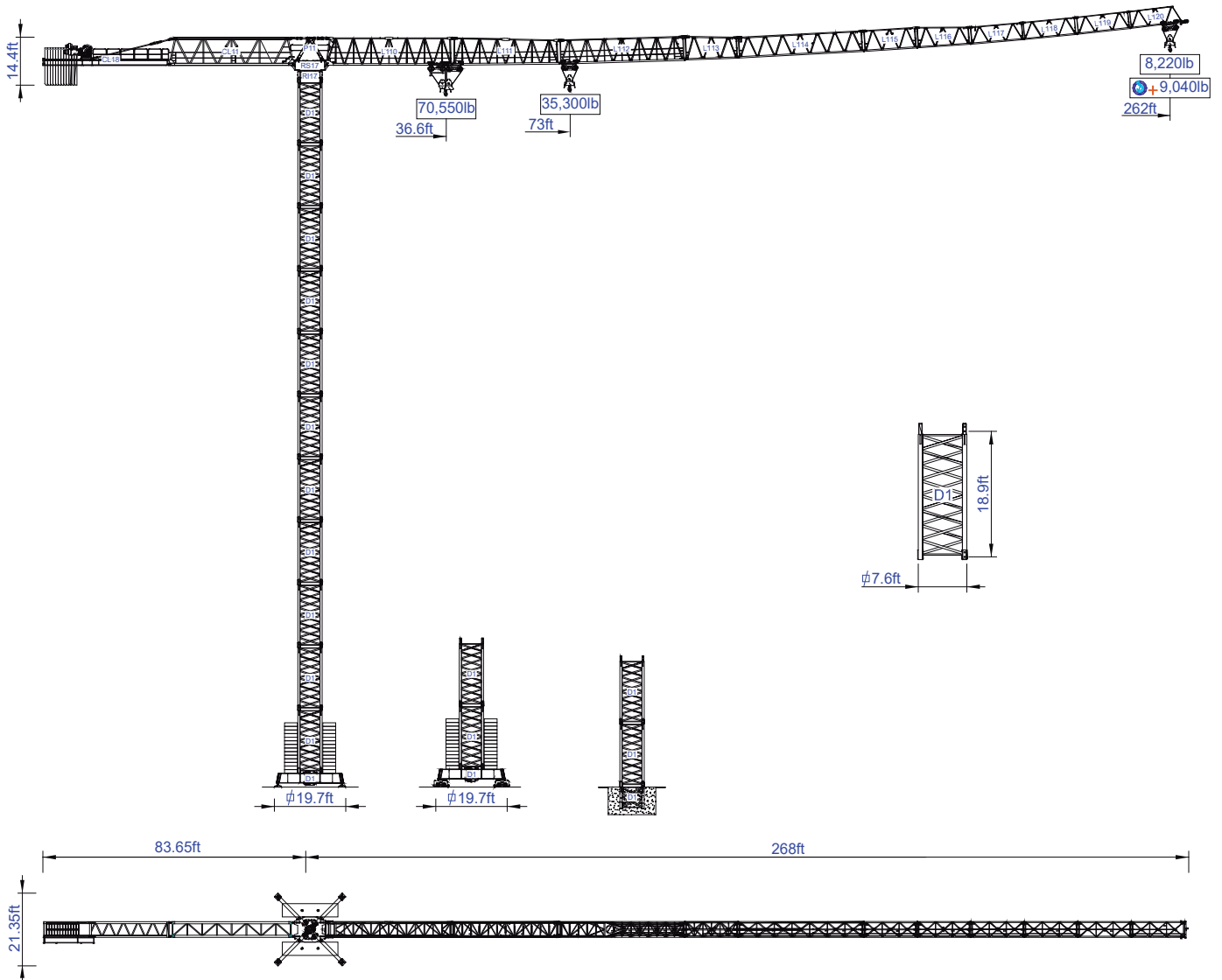


STAFFORD SOIMA

TOWER CRANES

SGT 8041TL

Data Sheet
Imperial



Headquarters

3620 S. 40th Street, Phoenix, AZ, 85040 USA

+1 (480) 993 3302

Factory

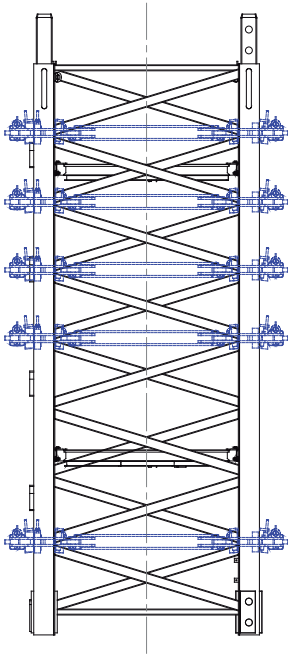
Zona Industrial de Canas de Senhorim - EN 234, 3525-040 Canas de Senhorim - Portugal

+351 232 673 530 info@staffordsoima.com

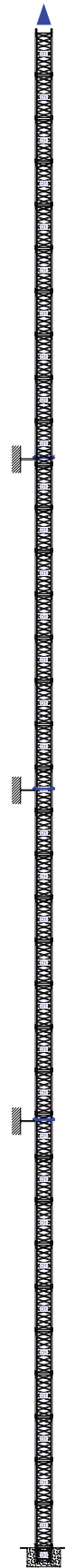
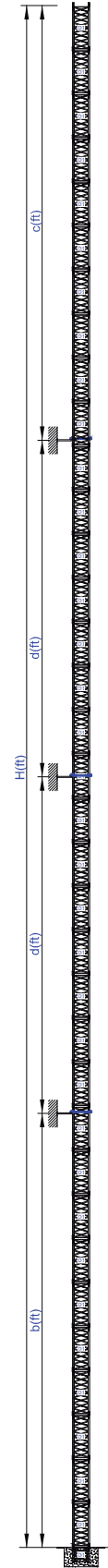
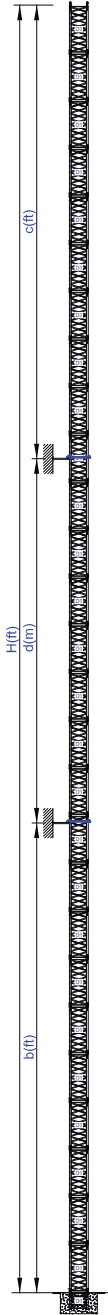
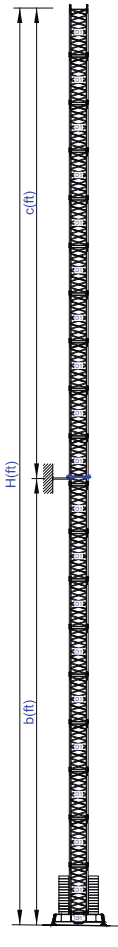
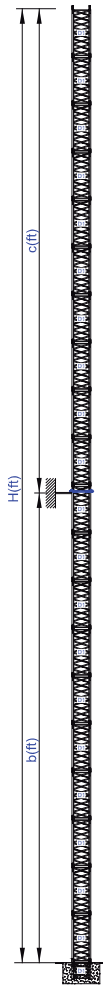
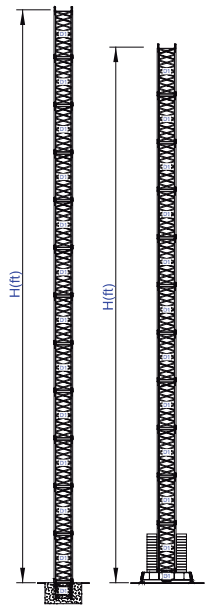
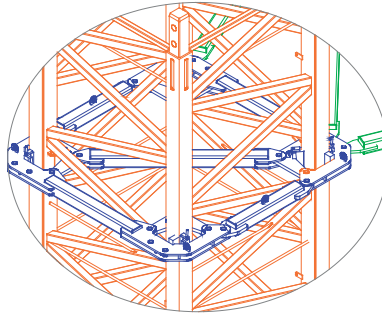
www.staffordsoima.com



Empresa certificada no âmbito da Conceção e Fabrico de Gruas Soima



More options



Wind
C25
C50
D50

H
216.5
206.7
167.3

H
216.5
206.7
167.3

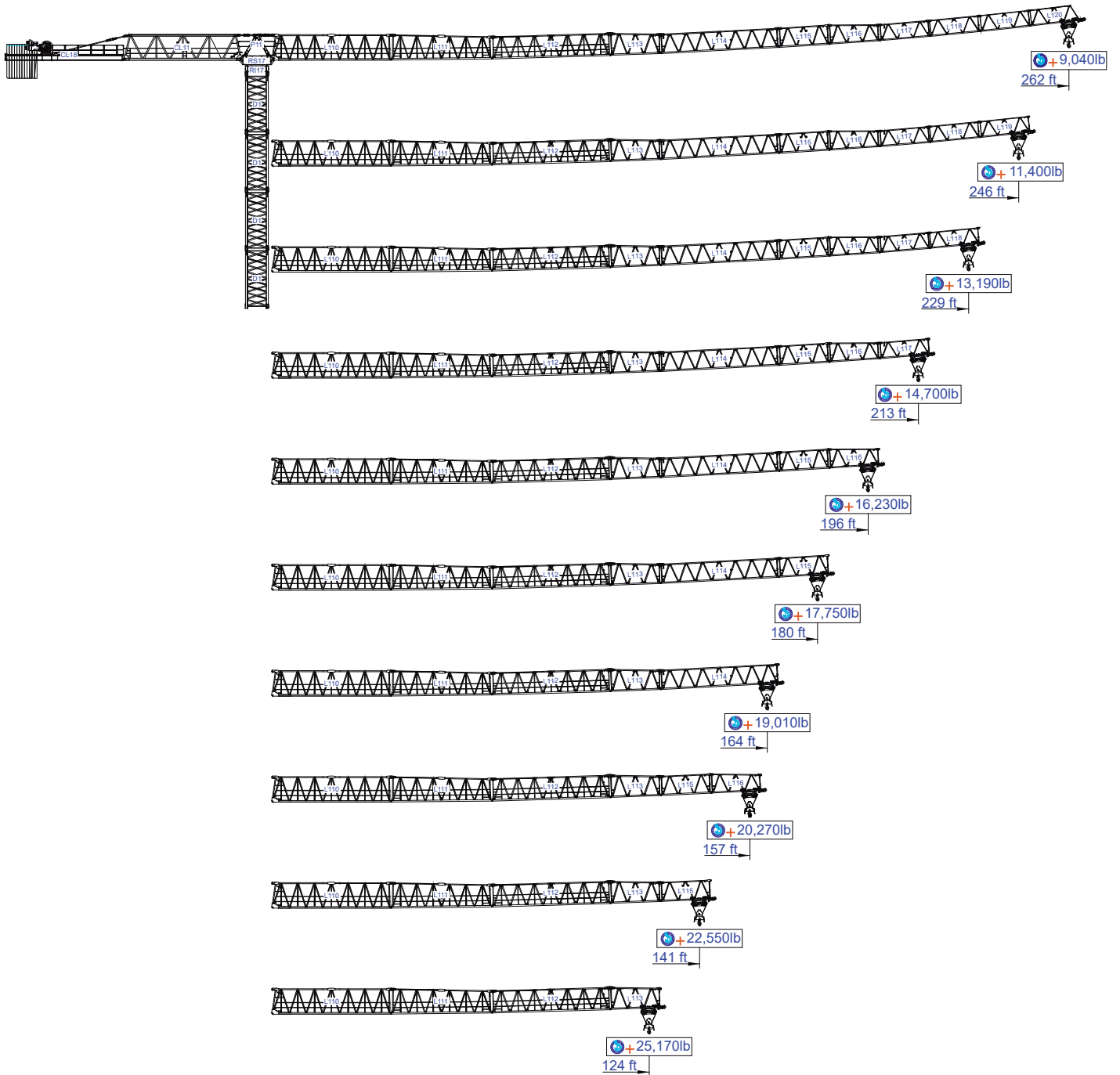
H	b	c
315.0	177.2	137.8
0.0	0.0	0.0
0.0	0.0	0.0

H	b	c
295.3	157.5	137.8
0.0	0.0	0.0
0.0	0.0	0.0

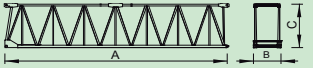
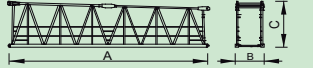
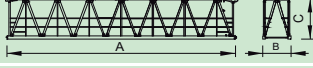
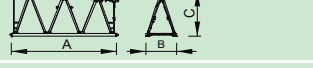

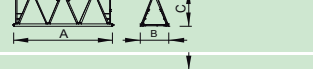
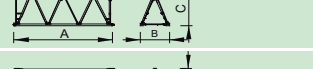
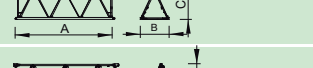
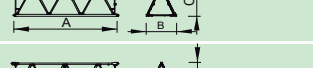
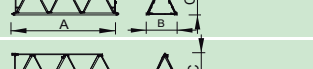
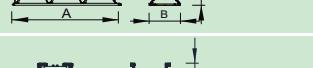
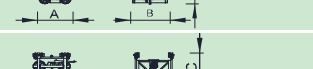
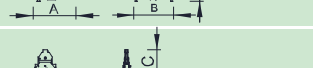
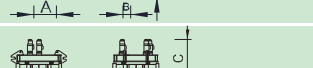
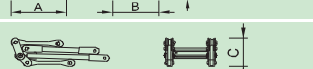

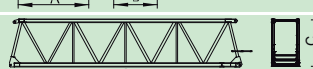


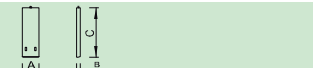
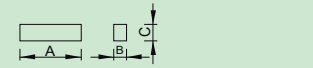

a	b	c	d
413.4	177.2	137.8	98.4
0.0	0.0	0.0	0.0
0.0	0.0	0.0	0.0

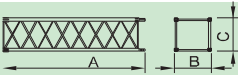
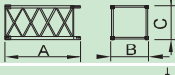

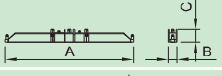
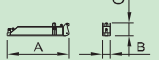
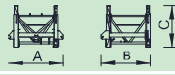



a	b	c	d
511.8	177.2	137.8	98.4
0.0	0.0	0.0	0.0
0.0	0.0	0.0	0.0




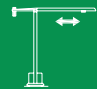



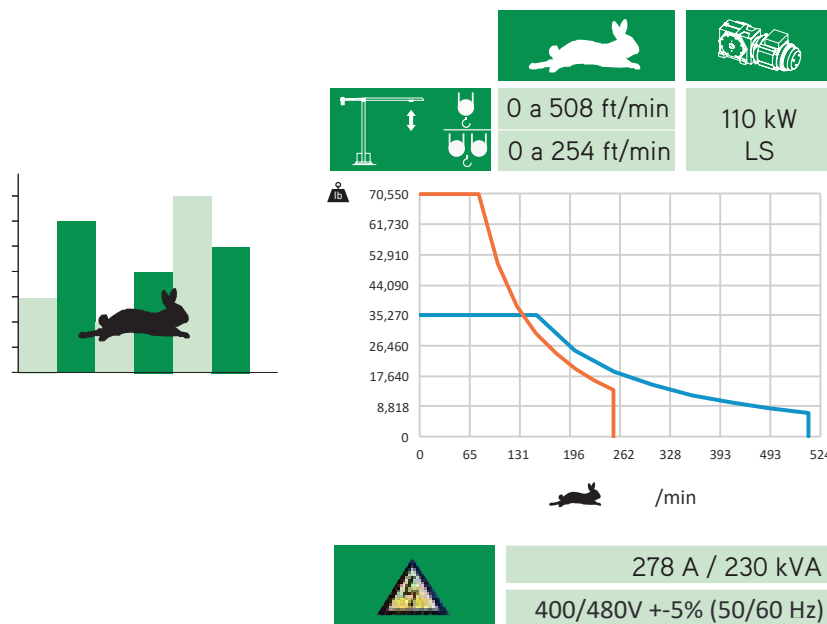


ft	lb	ft		ft																	ft
		70,550 lb	35,300 lb	33	49	66	82	92	108	125	141	157	164	180	196	213	229	246	262	ft	
262	52,910 10x 4,409 1x 8,818	36.6	73.0	70,550	51,460	37,560	31,160	27,590	23,080	19,750	17,200	15,180	14,480	12,960	11,700	10,630	9,710	8,920	8,220		
				70,550	56,610	41,320	34,280	30,350	25,390	21,730	18,920	16,700	15,930	14,260	12,870	11,690	10,680	9,810	9,040		
246	52,910 10x 4,409 1x 8,818	41.4	82.5	70,550	58,680	42,970	35,270	31,460	26,360	22,600	19,710	17,430	16,640	14,930	13,500	12,300	11,260	10,360			
				70,550	64,550	47,270	35,300	34,610	29,000	24,860	21,680	19,170	18,300	16,420	14,850	13,530	12,390	11,400			
229	48,501 9x 4,409 1x 8,818	43.6	87.0	70,550	62,100	45,540	35,600	33,290	27,910	23,950	20,910	18,500	17,670	15,870	14,360	13,090	11,990				
				70,550	68,310	50,090	39,160	35,300	30,700	26,350	23,000	20,350	19,440	17,460	15,800	14,400	13,190				
213	48,501 9x 4,409 1x 8,818	44.4	88.6	70,550	63,290	46,430	36,310	33,930	28,450	24,420	21,320	18,870	18,030	16,190	14,660	13,360					
				70,550	69,620	51,070	39,940	35,300	31,300	26,860	23,450	20,760	19,830	17,810	16,130	14,700					
196	48,501 9x 4,409 1x 8,818	44.7	89.0	70,550	63,660	46,700	36,530	34,120	28,620	24,560	21,450	18,990	18,140	16,290	14,750						
				70,550	70,030	51,370	40,180	35,300	31,480	27,020	23,600	20,890	19,950	17,920	16,230						
180	44,092 8x 4,409 1x 8,818	44.3	88.3	70,550	63,100	46,290	36,200	33,830	28,370	24,340	21,260	18,810	17,970	16,140							
				70,550	69,410	50,920	39,820	35,300	31,210	26,770	23,390	20,690	19,770	17,750							
164	39,638 7x 4,409 1x 8,818	42.8	85.3	70,550	60,810	44,570	34,820	32,600	27,320	23,440	20,460	18,100	17,280								
				70,550	66,890	49,030	38,300	35,300	30,050	25,780	22,510	19,910	19,010								
157	35,274 6x 4,409 1x 8,818	43.5	86.7	70,550	61,880	45,370	35,460	33,170	27,810	23,860	20,830	18,430									
				70,550	68,070	49,910	39,010	35,300	30,590	26,250	22,910	20,270									
141	30,864 5x 4,409 1x 8,818	42.9	85.8	70,550	60,940	44,670	35,270	32,670	27,380	23,490	20,500										
				70,550	67,030	49,140	35,300	35,300	30,120	25,840	22,550										
125	26,455 4x 4,409 1x 8,818	41.9	83.5	70,550	59,400	43,510	35,270	31,840	26,690	22,880											
				70,550	65,340	47,860	35,300	35,020	29,360	25,170											




			A (ft)	B (ft)	C (ft)	lb (± 5%)
Jib		L110	38.80	4.79	8.24	16,094
		L111	32.81	4.79	8.42	9,149
		L112	39.16	4.79	7.25	8,488
		L113	17.31	4.79	7.51	2,866
		L114	39.28	4.79	6.27	5,622
		L115	17.10	4.79	6.41	1,764
		L116	17.03	4.79	6.37	1,543
		L117	17.03	4.79	5.35	1,433
		L118	16.93	4.79	5.25	1,146
		L119	16.87	4.79	5.25	882
		L120	16.77	4.79	5.25	772
	Trolley		CP1	5.48	6.12	3.12
		CS1	6.17	5.78	4.28	1,962
Hook		MP1	3.35	1.12	3.87	1,113
Head Turntable		RS17 RI17	11.25	7.22	7.58	28,660
		P5	11.16	4.76	3.81	4,409
Cabin		C4	12.08	7.43	8.33	5,512
Counter-jib		CL11	39.16	4.76	7.96	13,669
		CL18	39.19	5.25	2.44	6,834
Hoisting Winch		M1	9.84	7.22	4.66	13,669
Counterweight		CP6	3.35	0.82	11.16	10x4,409 44,090
		CP7	9.84	1.97	2.79	8,818

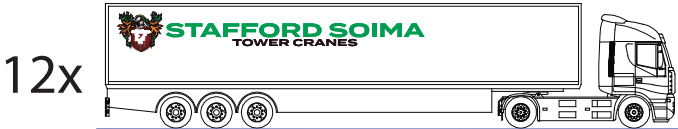
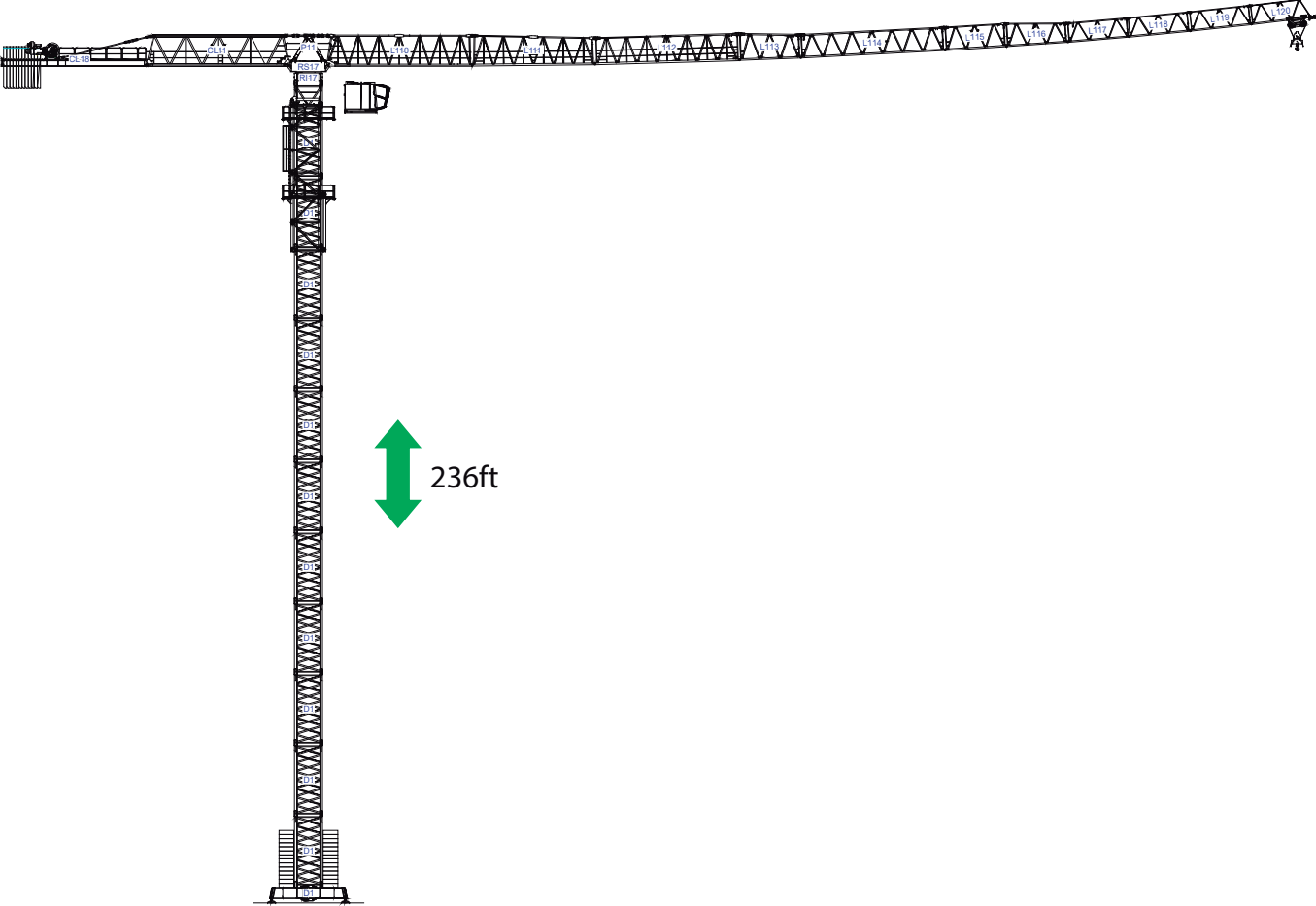
			A (ft)	B (ft)	C (ft)	lb (± 5%)
Tower Section		D1	20.49	7.62	7.62	10,031
		D1	11.04	7.62	7.62	5,688
Foundation Anchor		D1	8.20	7.62	7.62	4,409
Base Chassis		D1	28.63	2.63	5.25	12,125
			13.78	1.25	5.25	2x6,117 12,236
						24,361
Climbing Tower Section		TL1	9.34	8.48	7.55	5,875
Climbing Cage		TL2	39.24	1.02	8.40	8,047
		CP6	39.24	0.79	8.40	2x4,486 8,973
		TL4	15.55	0.89	8.40	3,307

		
	0 a 1 r.p.m.	4x59 ft-lbf
	0 a 265 ft/min	19 kW
	0-32 ft/min	4x5,5 kW



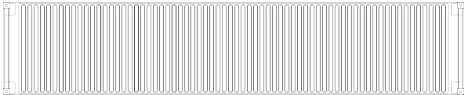
Max height of hoist

 (H)Max. 459 ft
 (H)Max. 918 ft + 



/

12x



40' High Cube

