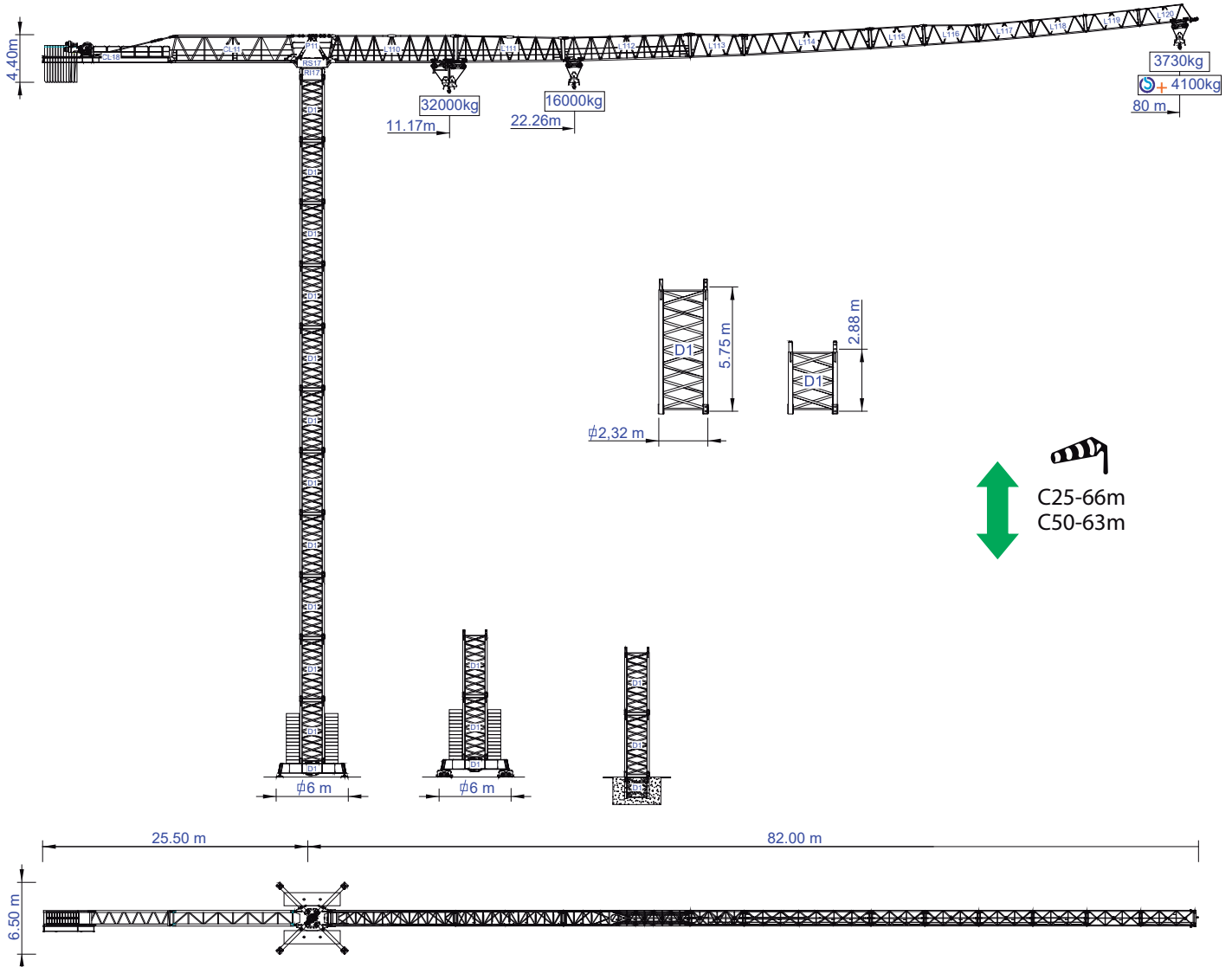


STAFFORD SOIMA

TOWER CRANES

SGT 8041TL

Data Sheet / Catalogo / Fiche Technique / Scheda Dati / Dentenblatt / техническая спецификация
Metric / Métrico / Métrique / Metrico / Metrisch / метрика



Headquarters

3620 S. 40th Street, Phoenix, AZ, 85040 USA
+1 (480) 993 3302

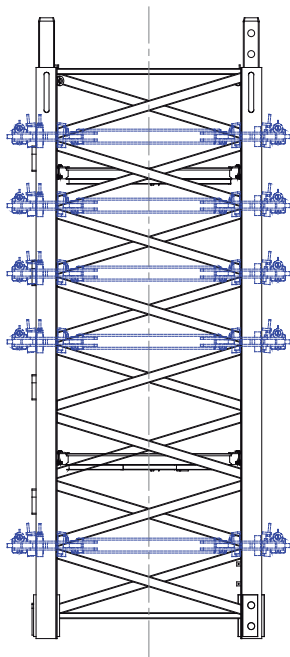
Factory

Zona Industrial de Canas de Senhorim - EN 234, 3525-040 Canas de Senhorim - Portugal
+351 232 673 530 info@staffordsoima.com

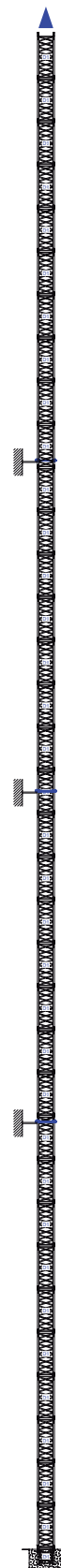
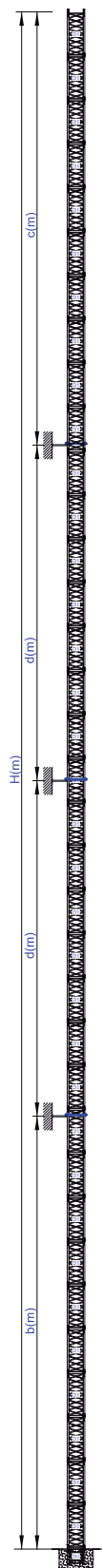
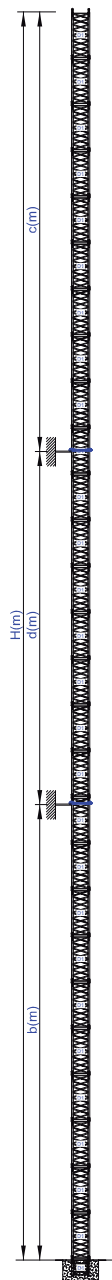
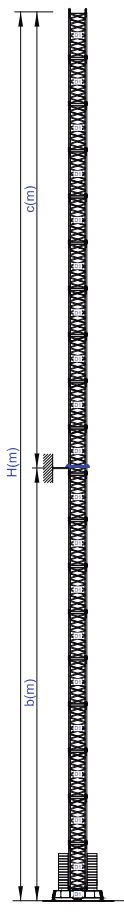
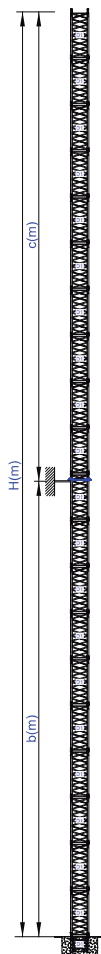
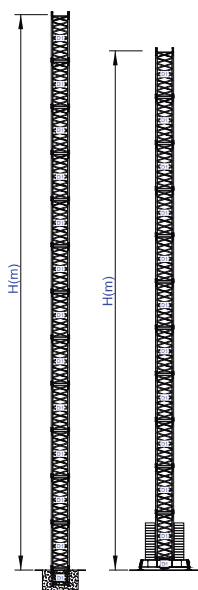
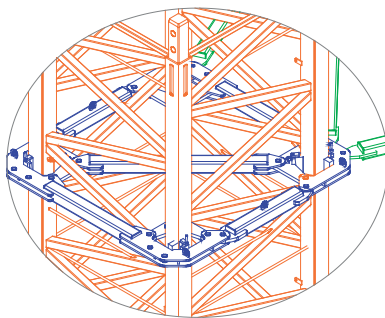
www.staffordsoima.com



Empresa certificada no âmbito da Conceção e Fabrico de Gruas Soima



More options



Wind
C25
C50
D50

H
66
63
51

H
66
63
51

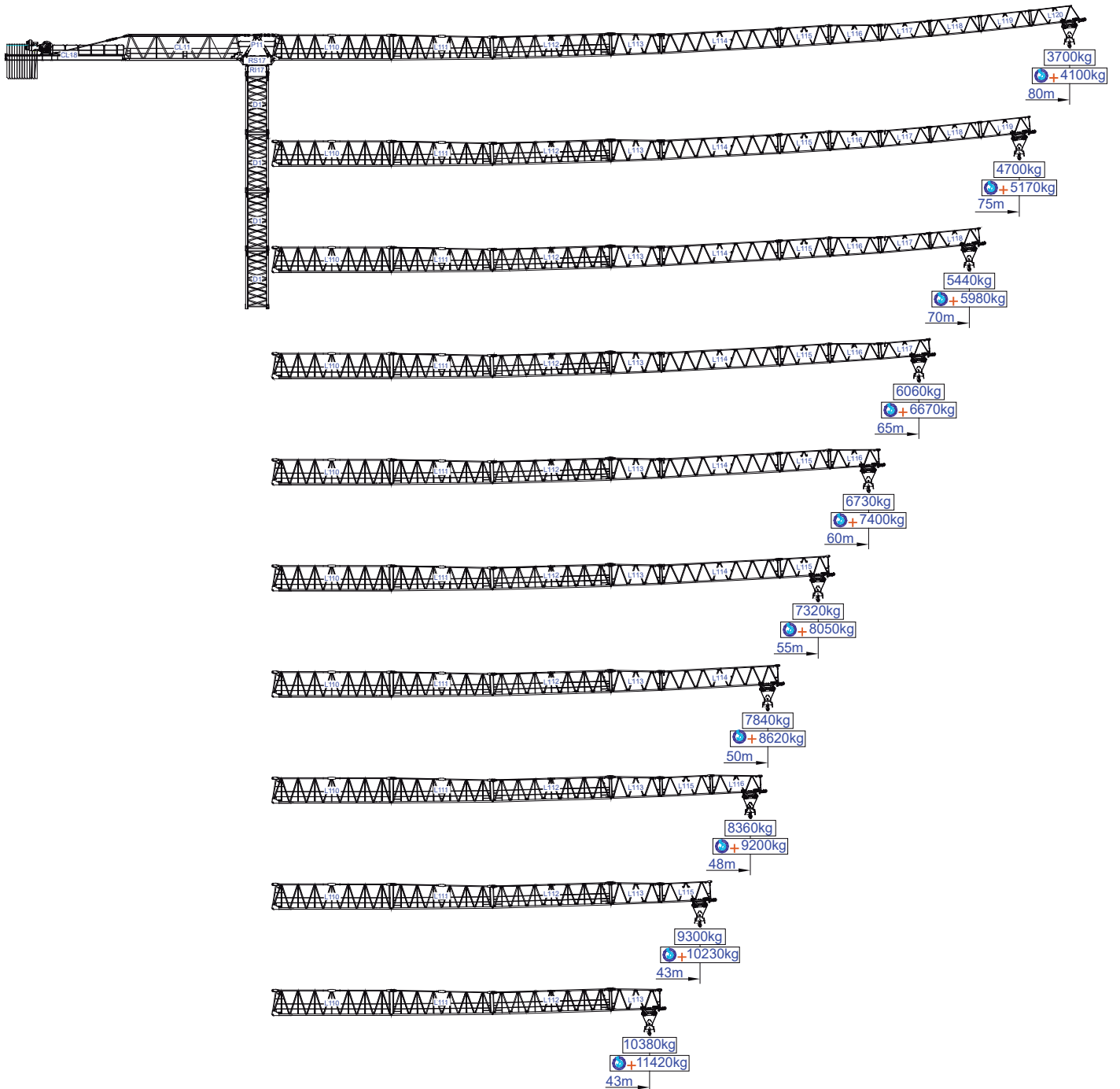
H	b	c
96	54	42

H	b	c
90	48	42

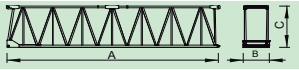
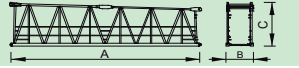
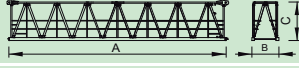
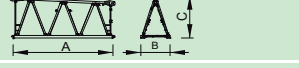
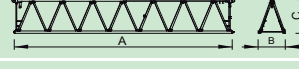
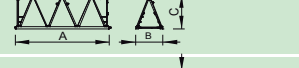
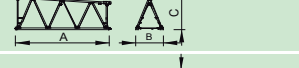
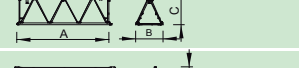
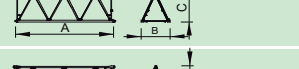
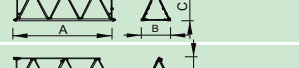
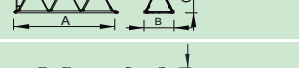
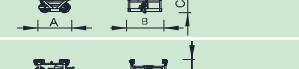
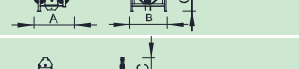

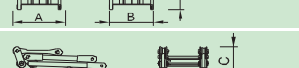

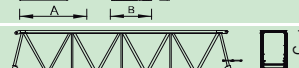
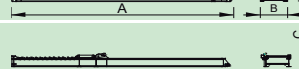

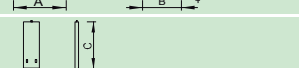
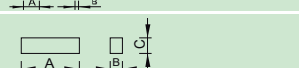

H	b	c	d
126	54	42	30

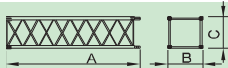
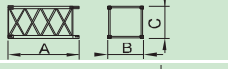

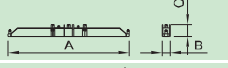
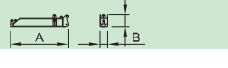
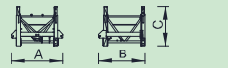



H	b	c	d
156	54	42	30



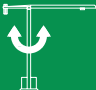
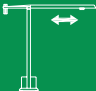
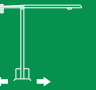








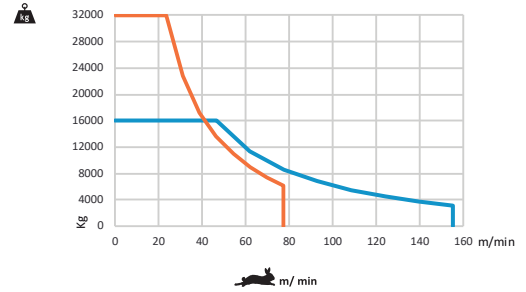
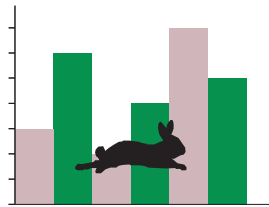
m	Diagram	Diagram		m																	m
		32t	16t	10	15	20	25	28	33	38	43	48	50	55	60	65	70	75	80		
80	24 t 12x2 t	11,17	22,26	32,0	23,3	17,0	14,1	12,5	10,5	9,0	7,8	6,9	6,6	5,9	5,3	4,8	4,4	4,0	3,7		
				32,0	25,7	18,7	15,5	13,8	11,5	9,9	8,6	7,6	7,2	6,5	5,8	5,3	4,8	4,4	4,0	4,1	+
75	24 t 12x2 t	12,62	25,15	32,0	26,6	19,5	16,0	14,3	12,0	10,3	8,9	7,9	7,6	6,8	6,1	5,6	5,1	4,7			
				32,0	29,3	21,4	16,0	15,7	13,2	11,3	9,8	8,7	8,3	7,5	6,7	6,1	5,6	5,2		+	
70	22 t 11x2 t	13,30	26,52	32,0	28,2	20,7	16,1	15,1	12,7	10,9	9,5	8,4	8,0	7,2	6,5	5,9	5,4				
				32,0	31,0	22,7	17,8	16,0	13,9	11,9	10,4	9,2	8,8	7,9	7,2	6,5	6,0		+		
65	22 t 11x2 t	13,54	26,99	32,0	28,7	21,1	16,5	15,4	12,9	11,1	9,7	8,6	8,2	7,3	6,6	6,1					
				32,0	31,6	23,2	18,1	16,0	14,2	12,2	10,6	9,4	9,0	8,1	7,3	6,7		+			
60	22 t 11x2 t	13,62	27,14	32,0	28,9	21,2	16,6	15,5	13,0	11,1	9,7	8,6	8,2	7,4	6,7						
				32,0	31,8	23,3	18,2	16,0	14,3	12,3	10,7	9,5	9,1	8,1	7,4		+				
55	20 t 10x2 t	13,50	26,92	32,0	28,6	21,0	16,4	15,3	12,9	11,0	9,6	8,5	8,2	7,3							
				32,0	31,5	23,1	18,1	16,0	14,2	12,1	10,6	9,4	9,0	8,1		+					
50	18 t 9x2 t	13,04	26,00	32,0	27,6	20,2	15,8	14,8	12,4	10,6	9,3	8,2	7,8								
				32,0	30,3	22,2	17,4	16,0	13,6	11,7	10,2	9,0	8,6		+						
48	16 t 8x2 t	13,26	26,43	32,0	28,1	20,6	16,1	15,0	12,6	10,8	9,4	8,4									
				32,0	30,9	22,6	17,7	16,0	13,9	11,9	10,4	9,2		+							
43	14 t 7x2 t	13,07	26,05	32,0	27,6	20,3	16,0	14,8	12,4	10,7	9,3										
				32,0	30,4	22,3	16,0	16,0	13,7	11,7	10,2		+								
38	12 t 6x2 t	12,76	25,44	32,0	26,9	19,7	16,0	14,4	12,1	10,4											
				32,0	29,6	21,7	16,0	15,9	13,3	11,4		+									


		A (mm)	B (mm)	C (mm)	kg (± 5%)		
Jib / Lança / Fleche / Braccio		L110	11825	1460	2510	7300	
/ Ausleger / кливер		L111	10000	1460	2566	4150	
		L112	11935	1460	2210	3850	
		L113	5275	1460	2290	1300	
		L114	11970	1460	1910	2550	
		L115	5210	1460	1955	800	
		L116	5190	1460	1940	700	
		L117	5190	1460	1630	650	
		L118	5160	1460	1600	520	
		L119	5140	1460	1600	400	
		L120	5110	1460	1600	350	
	Trolley / Carrinho / Chariot / Carrello		CP1	1670	1865	950	570
	/ Wagen / тележка		CS1	1880	1760	1305	890
Hook / Moitão / Accrocher / Gancio		MP1	1020	340	1180	505	
Head turntable / Cabeçote / Pivot / Testa giradischi / Kopfplattenspieler		RS17 RI17	3430	2200	2310	13000	
		P5	3400	1450	1160	2000	
Cabin / Cabine / Cabine / Kabine / Кабина		C4	3680	2265	2540	2500	
Counter-jib / Contra lança / Contre-flèche / Gegenausleger / Контр-стрела		CL11	11935	1450	2425	6200	
		CL18	11945	1600	745	3100	
Hoisting Winch +rope / Elevação +cabo / Treuil de		M1	3000	2200	1420	6200	
Counterweight / Contrapeso / Contrepoids / Gegengewicht / Противовес		CP6	1020	250	3400	10x2000 20000	
		CP7	3000	600	850	4000	

			A (mm)	B (mm)	C (mm)	kg
Tower section / torre / Coupe tour / Sezione torre / Turmabschnitt / Секция башни Foundation anchor / Tramo encastrar /		D1	6245	2322	2322	4550
		D1	3365	2322	2322	2580
		D1	2500	2322	2322	2000
Base Chassis		D1	8725	800	1600	5500
			4200	380	1600	2x2775 5550
11050						
Climbing tower section / Climbing cage		TL1	2846	2584	2300	2665
		TL2	11960	310	2560	3650
		TL3	11960	240	2560	2x2035 4070
		TL4	4740	270	2560	1500




		
	0 a 1 r.p.m.	4x8,0 daN.m
	0 a 60 m/min	15 kW
	0-10 m/min	4x5,5 kW

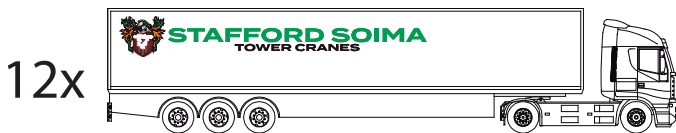
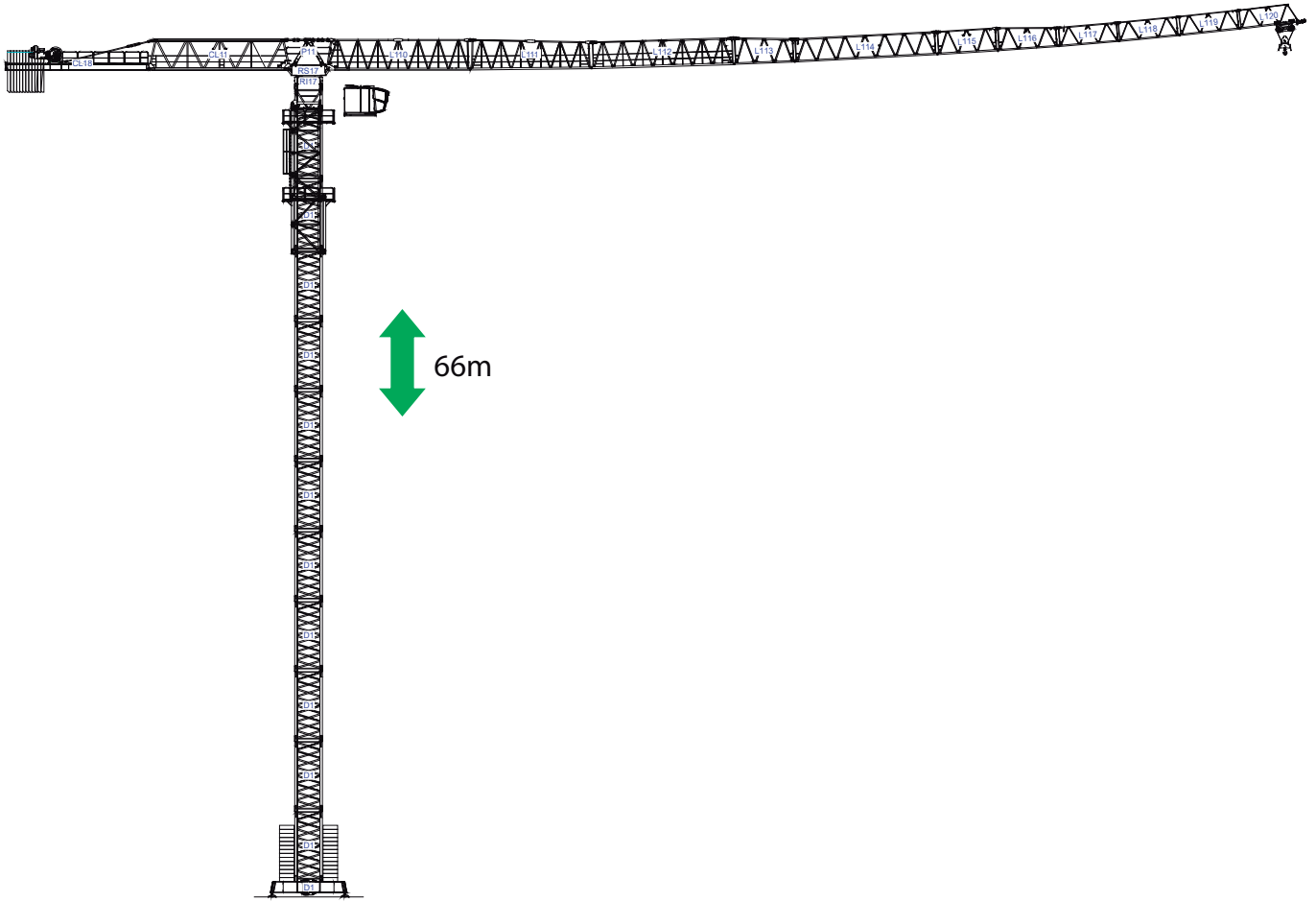
		
	0 a 155 m/min	110 kW
	0 a 77,5 m/min	LS



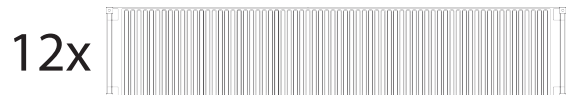
	278 A / 230 kVA
	400/480V +-5% (50/60 Hz)

Max height of hoist

 (H)Max. 140m
 (H)Max. 280m + 



/



40' High Cube

