

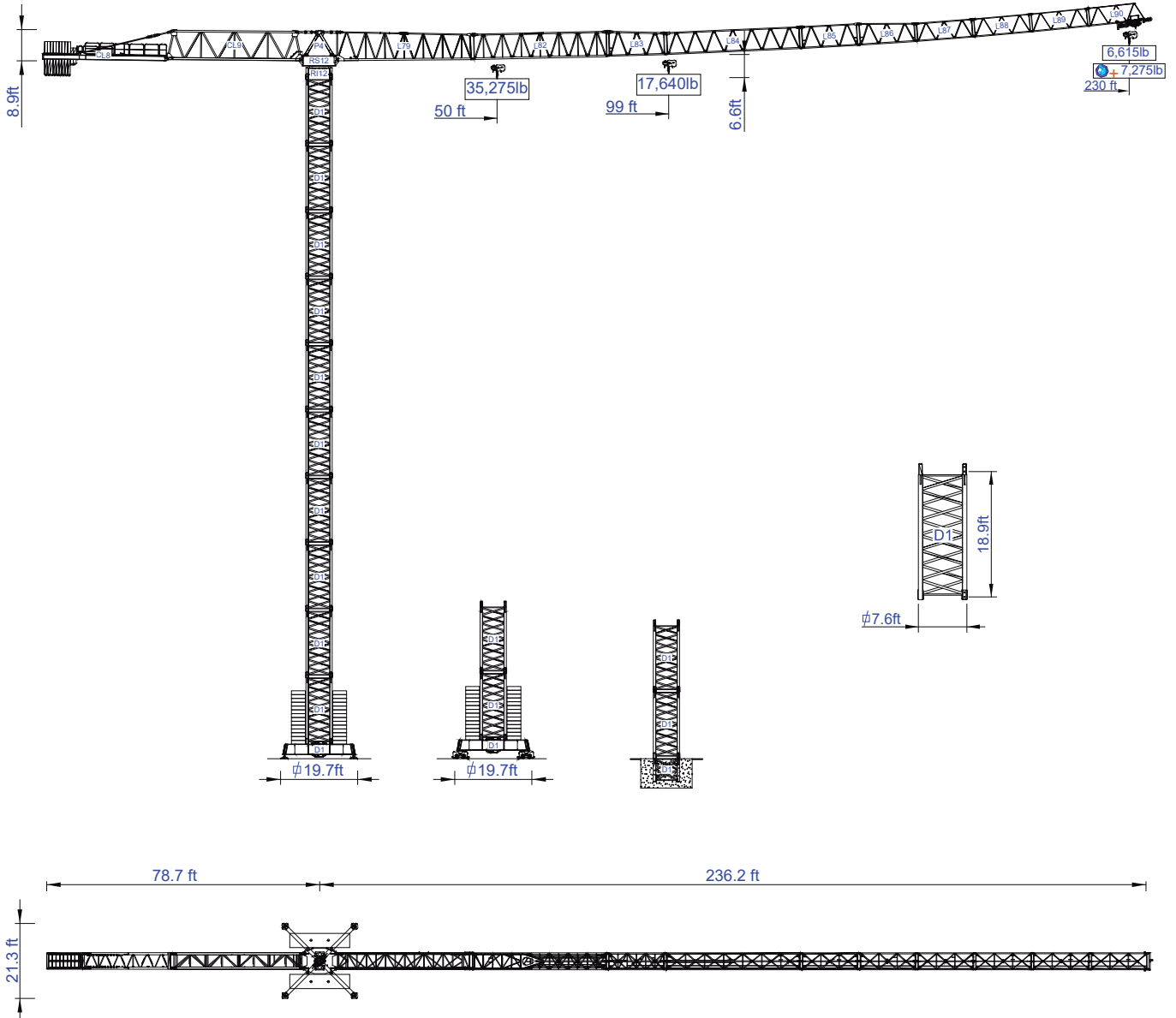


STAFFORD SOIMA

TOWER CRANES

SGT 7030TL

Data Sheet
Imperial



Headquarters

3620 S. 40th Street, Phoenix, AZ, 85040 USA

+1 (480) 993 3302

Factory

Zona Industrial de Canas de Senhorim - EN 234, 3525-040 Canas de Senhorim - Portugal

+351 232 673 530 info@staffordsoima.com

www.staffordsoima.com

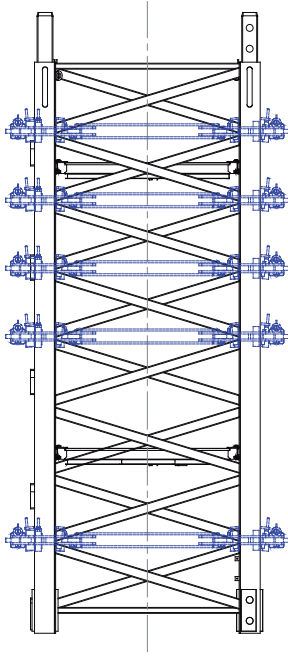
SOIMA Plus



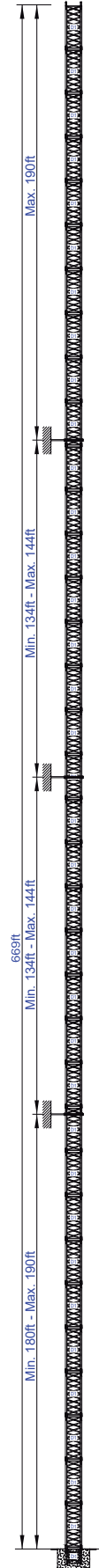
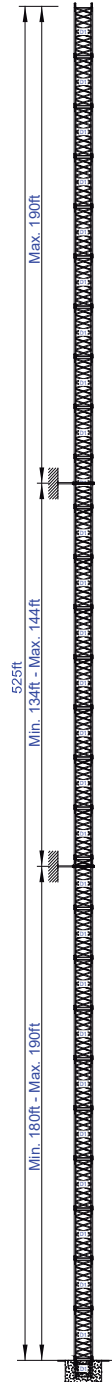
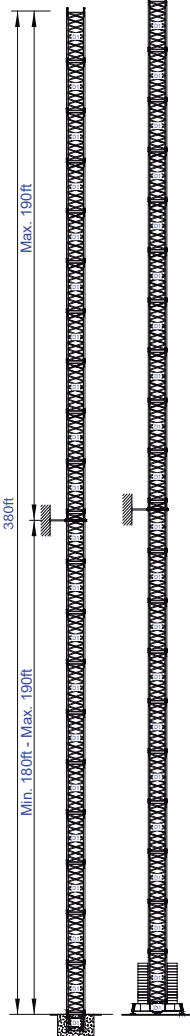
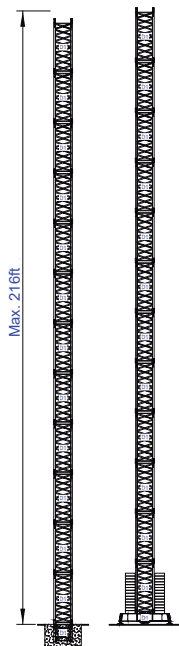
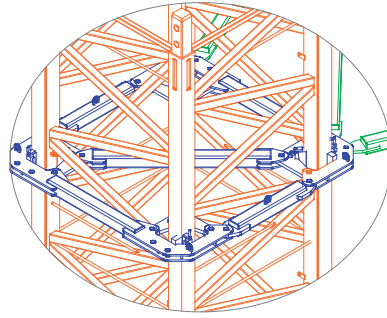
Zoning

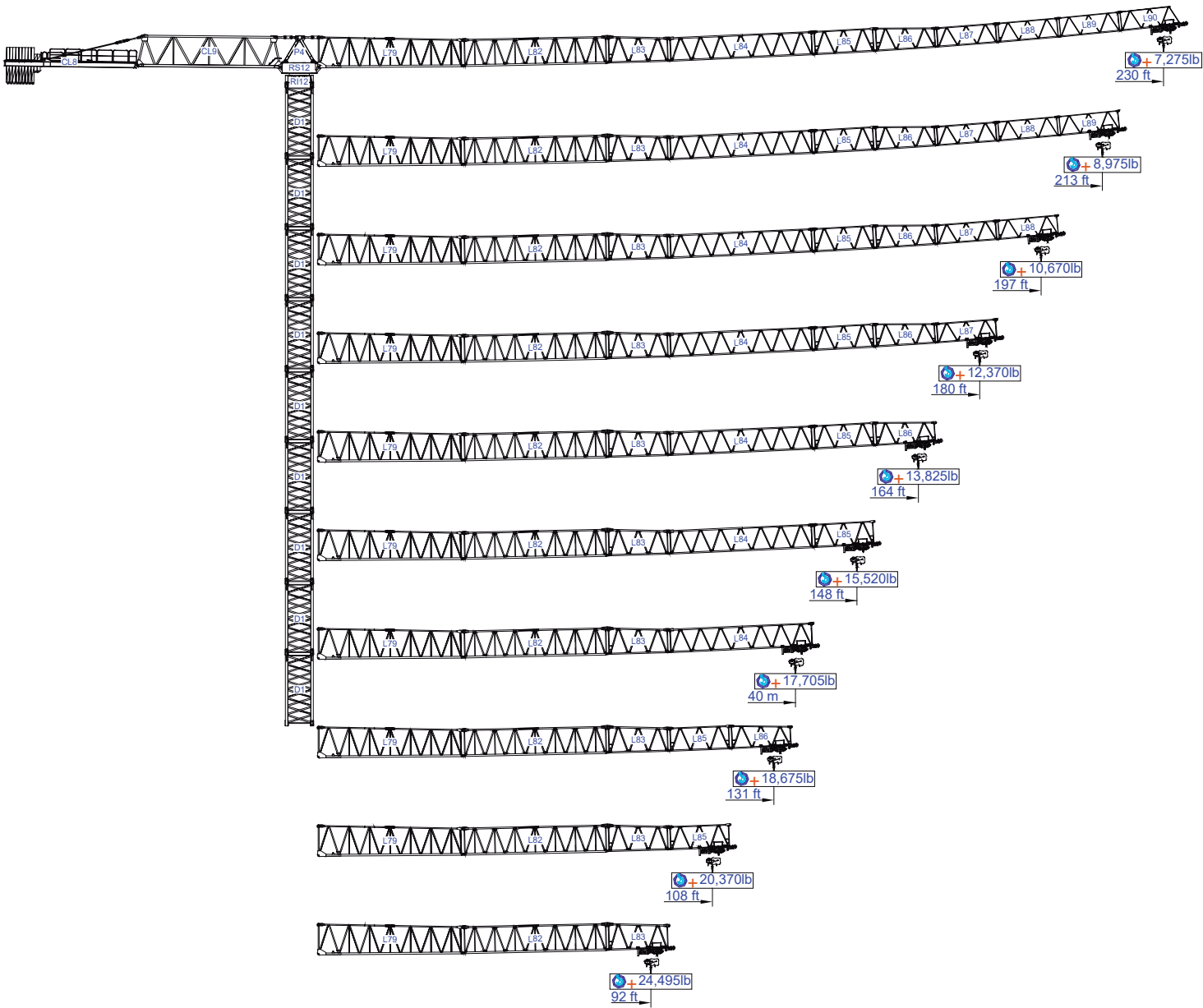




Empresa certificada no âmbito da Conceção, Fabrico e Serviço Pós-venda de Gruas Soima e componentes

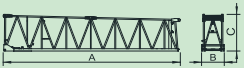

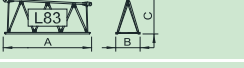
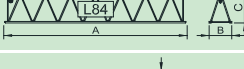
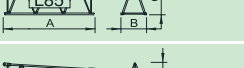
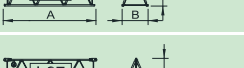
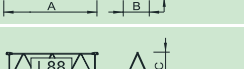
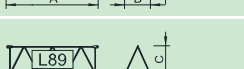
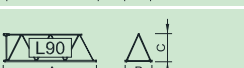
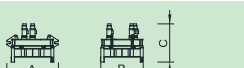
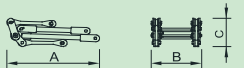
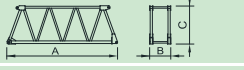
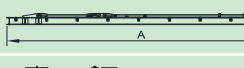
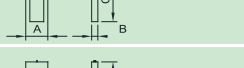
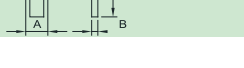



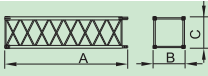
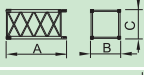
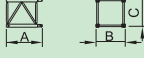
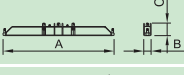
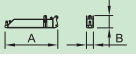


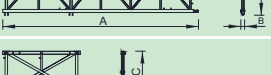

More options








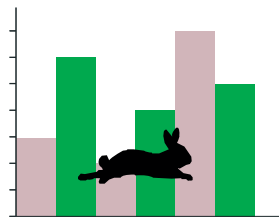


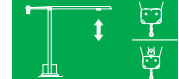
ft																		ft
		35,270 lb	17,640 lb	49	66	82	92	108	125	131	148	164	180	197	213	230	lb	
230	44,409 lb 9 x 4,409 lb + 2 x 2,204 lb	50.20	99.20	35,270	26,230	20,280	17,860	16,090	13,670	13,010	11,240	9,920	8,820	7,940	7,280	6,610		
				35,270	28,850	22,308	19,646	17,700	15,040	14,310	12,360	10,910	9,700	8,730	8,010	7,270	Ⓢ+	
213	44,409 lb 9 x 4,409 lb + 2 x 2,204 lb	53.50	102.50	35,270	29,100	22,708	19,842	17,640	15,210	14,330	12,570	11,240	9,920	9,040	8,160			
				35,270	32,010	24,978	21,826	19,400	16,730	15,760	13,830	12,360	10,910	9,940	8,980	Ⓢ+		
197	41,888 lb 9 x 4,409 lb + 1 x 2,204 lb	56.80	105.70	35,270	31,310	24,471	21,385	17,857	16,310	15,430	13,450	11,900	10,800	9,700				
				35,270	34,440	26,918	23,523	19,643	17,940	16,970	14,800	13,090	11,880	10,670	Ⓢ+			
180	41,888 lb 9 x 4,409 lb + 1 x 2,204 lb	60.00	109.00	35,270	32,630	25,574	22,487	18,519	16,980	16,090	14,110	12,570	11,240					
				35,270	35,890	28,131	24,736	20,371	18,680	17,700	15,520	13,830	12,360	Ⓢ+				
164	39,683 lb 9 x 4,409 lb	63.30	112.30	35,270	32,850	25,574	22,487	18,519	17,200	16,090	14,110	12,570						
				35,270	36,140	28,131	24,736	20,371	18,920	17,700	15,520	13,830	Ⓢ+					
148	35,274 lb 8 x 4,409 lb	66.60	115.60	35,270	32,630	25,574	22,487	18,519	16,980	16,090	14,110							
				35,270	35,890	28,131	24,736	20,371	18,680	17,700	15,520	Ⓢ+						
131	33,069 lb 7 x 4,409 lb + 1 x 2,204 lb	69.90	118.90	35,270	32,630	25,574	22,487	18,519	16,980	16,090								
				35,270	35,890	28,131	24,736	20,371	18,680	17,700	Ⓢ+							
125	30,865 lb 7 x 4,409 lb	73.20	122.10	35,270	32,630	25,353	22,267	18,519	16,980									
				35,270	35,890	27,888	24,493	20,371	18,680	Ⓢ+								
108	26,455 lb 6 x 4,409 lb	76.40	125.40	35,270	32,630	25,353	22,487	18,519										
				35,270	35,890	27,888	24,736	20,371	Ⓢ+									
92	24,251 lb 5 x 4,409 lb + 1 x 2,204 lb	79.70	128.70	35,270	32,410	25,353	22,267											
				35,270	35,650	27,888	24,493	Ⓢ+										

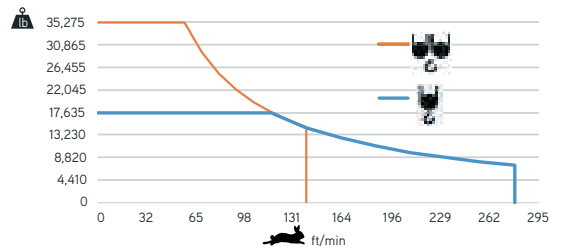
		A (ft)	B (ft)	C (ft)	lb	Code
L79		39.30	5.05	8.43	20,503	533 70 30
L82		39.38	4.79	7.46	8,157	
L83		17.31	4.79	7.32	2,866	
L84		39.28	4.79	6.40	4,850	
L85		17.10	4.79	6.38	1,764	
L86		17.03	4.79	6.30	1,433	
L87		17.03	4.79	5.28	1,146	
L88		16.93	4.79	6.22	882	
L89		16.87	4.79	5.22	772	
L90		16.64	4.79	5.22	882	
RS12 RI12		11.25	7.22	7.58	27,558	
P4		8.53	4.76	3.41	3,968	
CL9		38.54	4.76	8.58	11,817	
CL8		35.85	4.69	2.21	5,732	
CP4		5.25	0.82	5.15	2x2,205 4,409	704 10 00
CP5		3.35	0.82	11.16	12x4,409 39,683	704 20 00
TOTAL					136,421	


		A (ft)	B (ft)	C (ft)	lb	Code
D1		20.49	7.62	7.62	10,031	533 06 00
D1		11.04	7.62	7.62	5,688	533 06 01
D1		8.20	7.62	7.62	4,409	533 06 02
D1		28.63	2.63	5.25	12,125	633 00 01
		13.78	1.25	5.25	2x6,117 12,236	
					24,361	
TL1		9.34	8.48	7.55	5,875	533 06 03
TL2		39.24	1.02	8.40	8,047	
CP6		39.24	0.79	8.40	2x4,486 8,973	
TL4		15.55	0.89	8.40	3,307	

	
	0 a 1 r.p.m. 3x6,5 daN.m
	0 a 196 ft/min 7,5 kW
	0-32 ft/min 4x5,5 kW

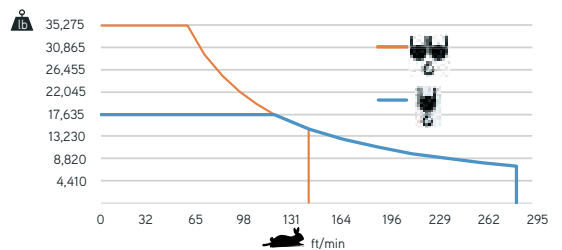



	
	0 a 278 ft/min
	0 a 139 ft/min
55 kW	



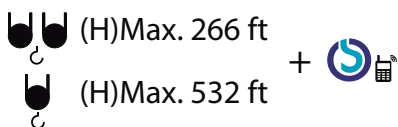
	100 kVA
400 V +- 5% (50/60 Hz)	

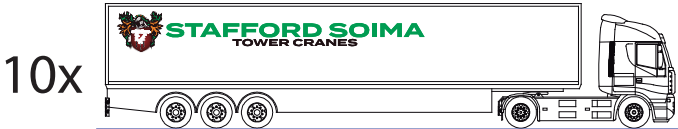
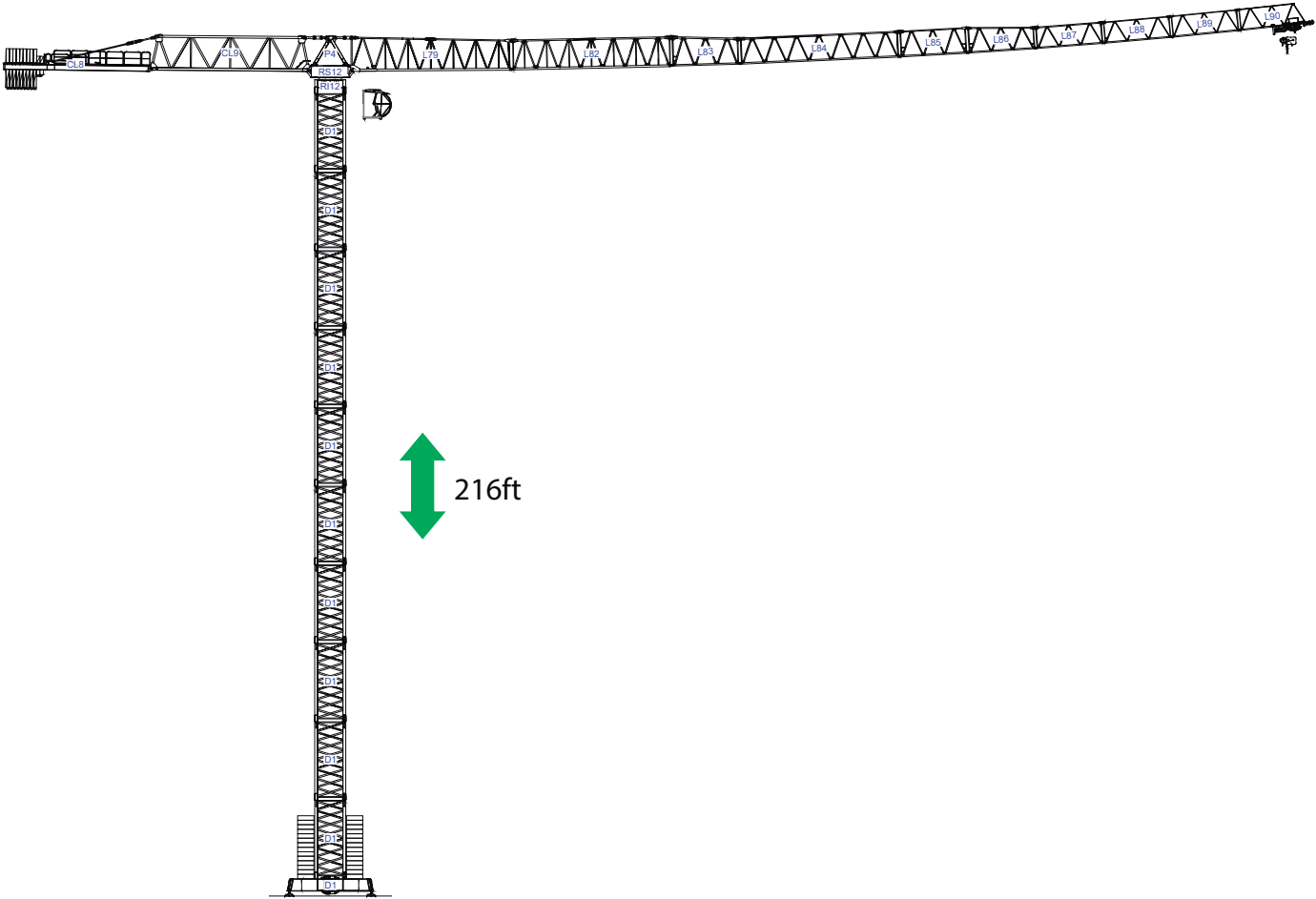
	
	0 a 347 ft/min
	0 a 174 ft/min
75 kW	



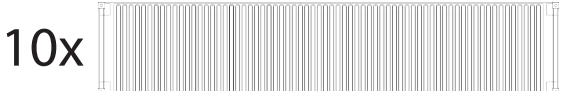
	130 kVA
400 V +- 5% (50/60 Hz)	

Max height of hoist



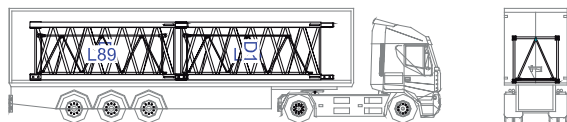


/

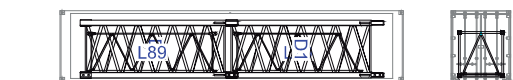


40' High Cube

1

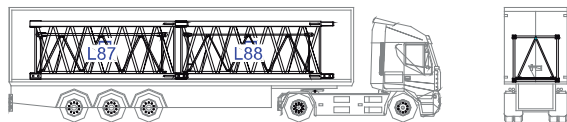


2xD1-L89-L90

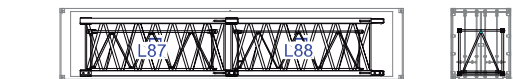


2xD1-L89-L90

2

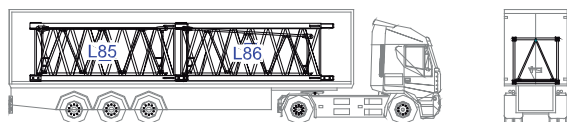


2xD1-L87-L88



2xD1-L87-L88

3

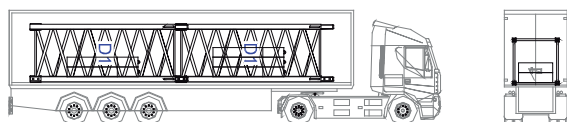


2xD1-L85-L86

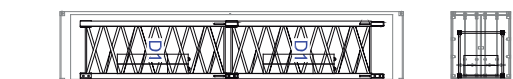


2xD1-L85-L86

4

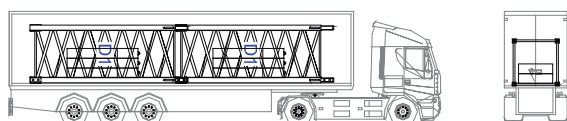


2xD1-2xCP5-1xCP4

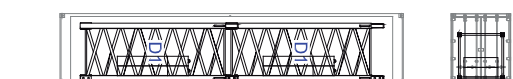


2xD1-2xCP5-1xCP4

5

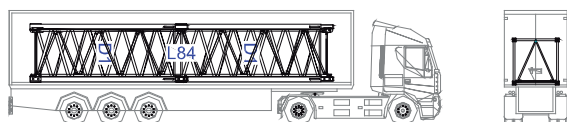


2xD1-2xCP5-2xCP4

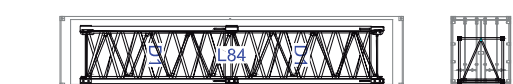


2xD1-2xCP5-2xCP4

6

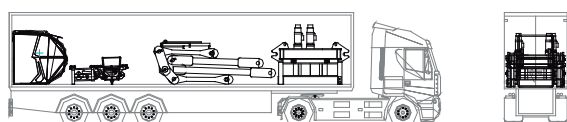


2xD1-L84

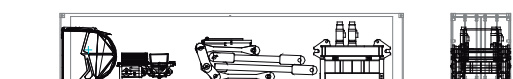


2xD1-L84

7

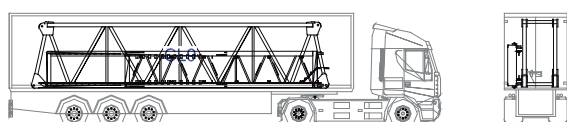


P4-RS12-RI11-CB1-TP2-TS2

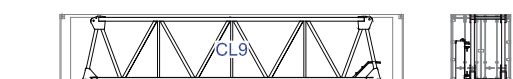


P4-RS12-RI11-CB1-TP2-TS2

8

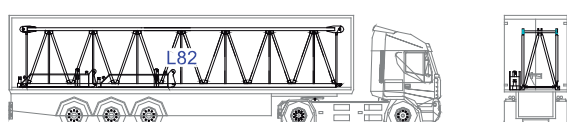


CL9-CL8



CL9-CL8

9

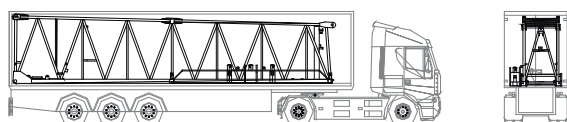


L82-2XCH.D1

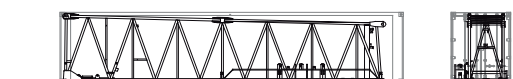


L82-2XCH.D1

10



L79-CH.D1



L79-CH.D1

