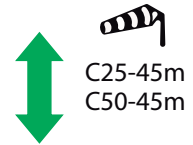
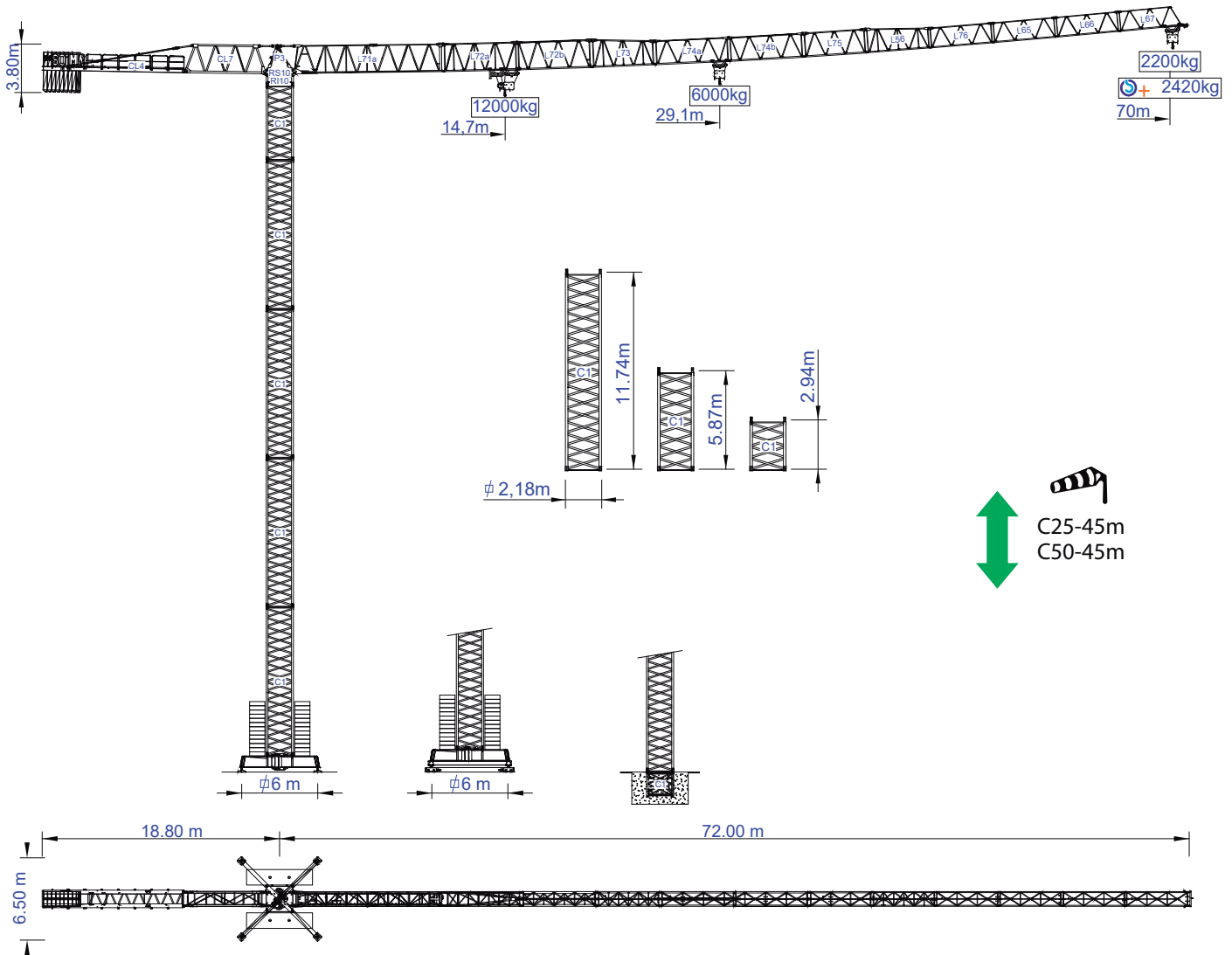




STAFFORD SOIMA TOWER CRANES

SGT 7022TL

Data Sheet / Catalogo / Fiche Technique / Scheda Dati / Dentenblatt / техническая спецификация
Metric / Métrico / Métrique / Metrico / Metrisch / метрика



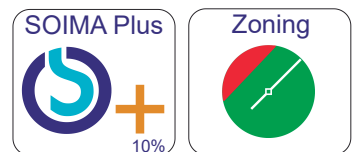
Headquarters

3620 S. 40th Street, Phoenix, AZ, 85040 USA
+1 (480) 993 3302

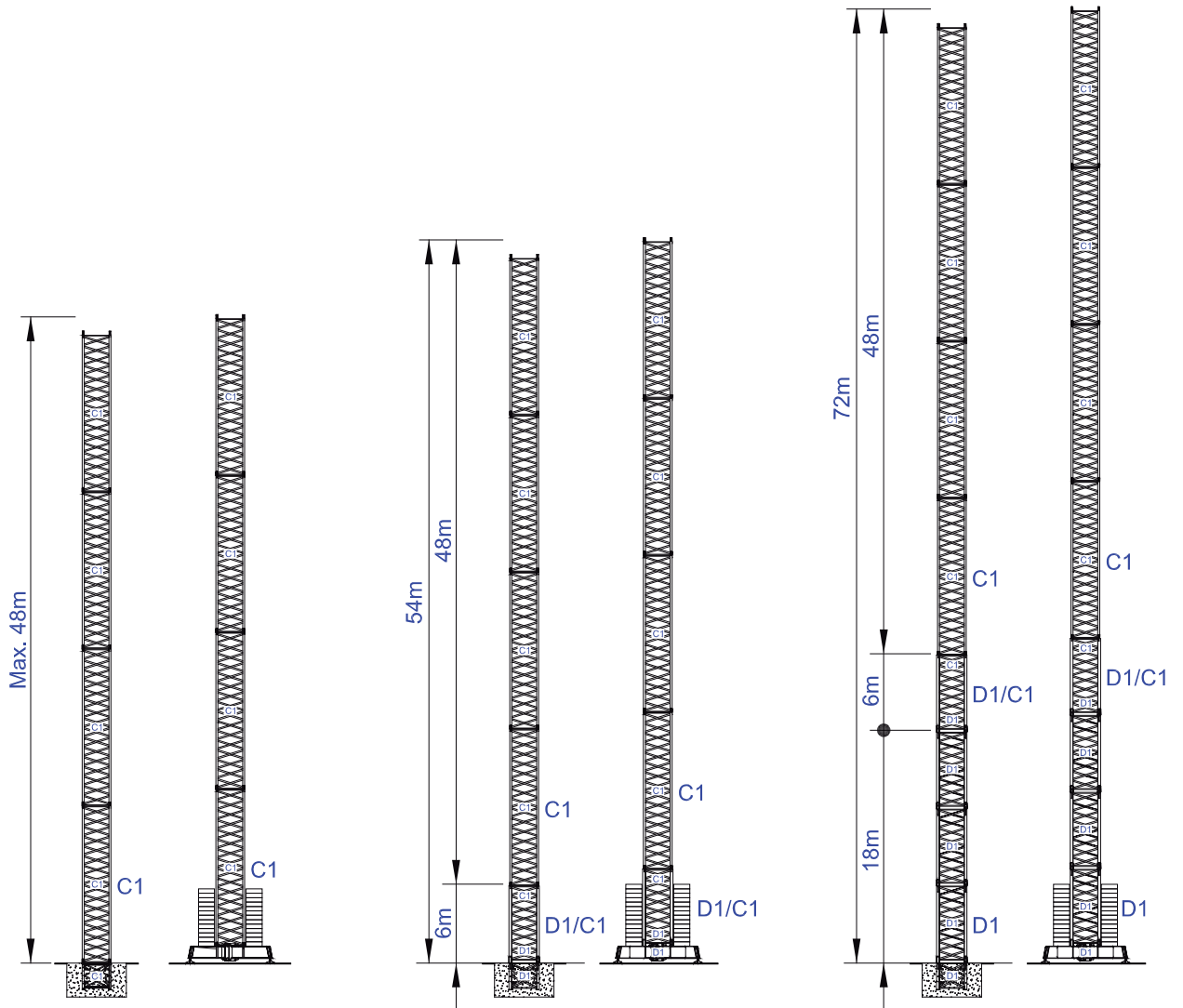
Factory

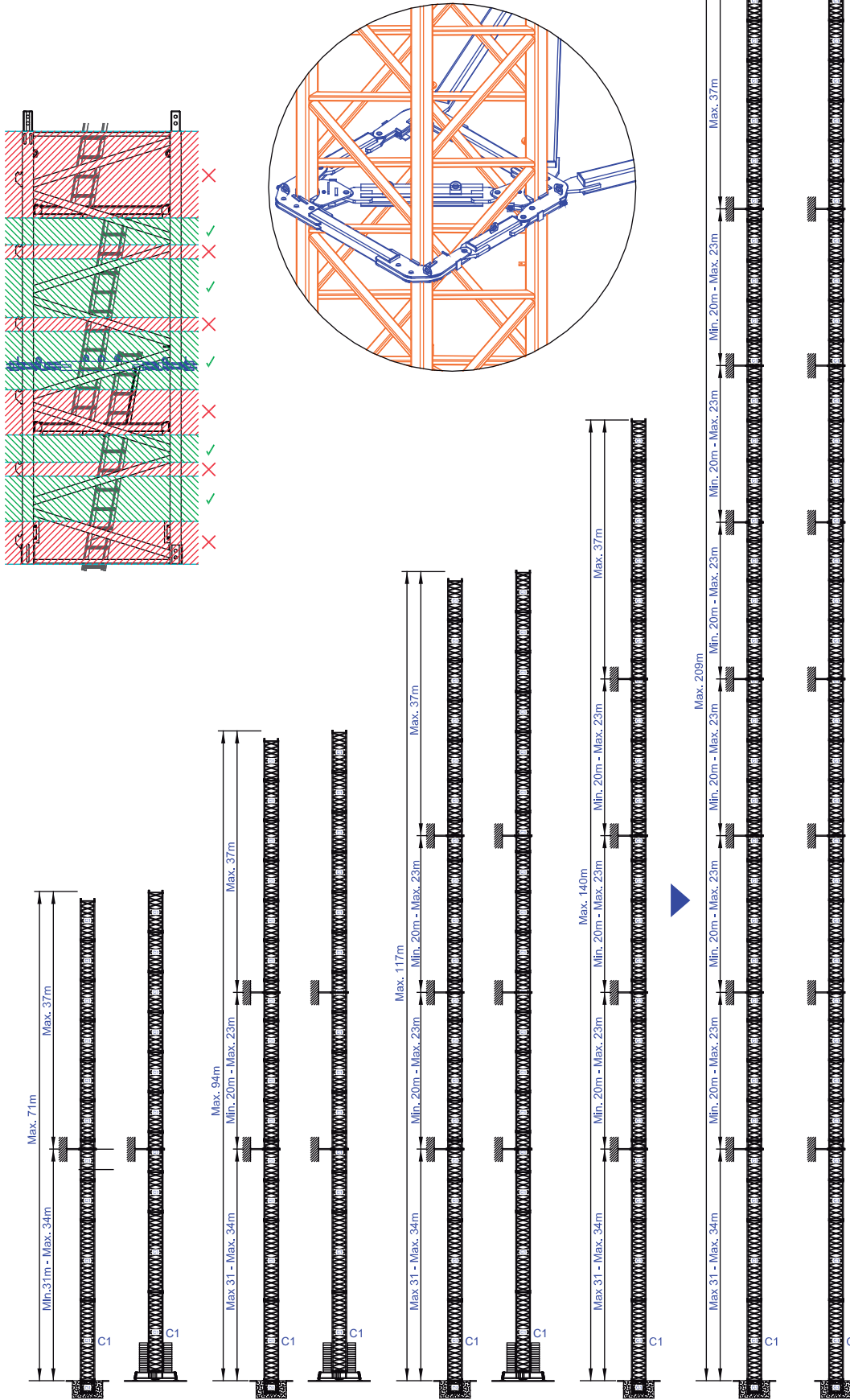
Zona Industrial de Canas de Senhorim - EN 234, 3525-040 Canas de Senhorim - Portugal
+351 232 673 530 info@soima.com

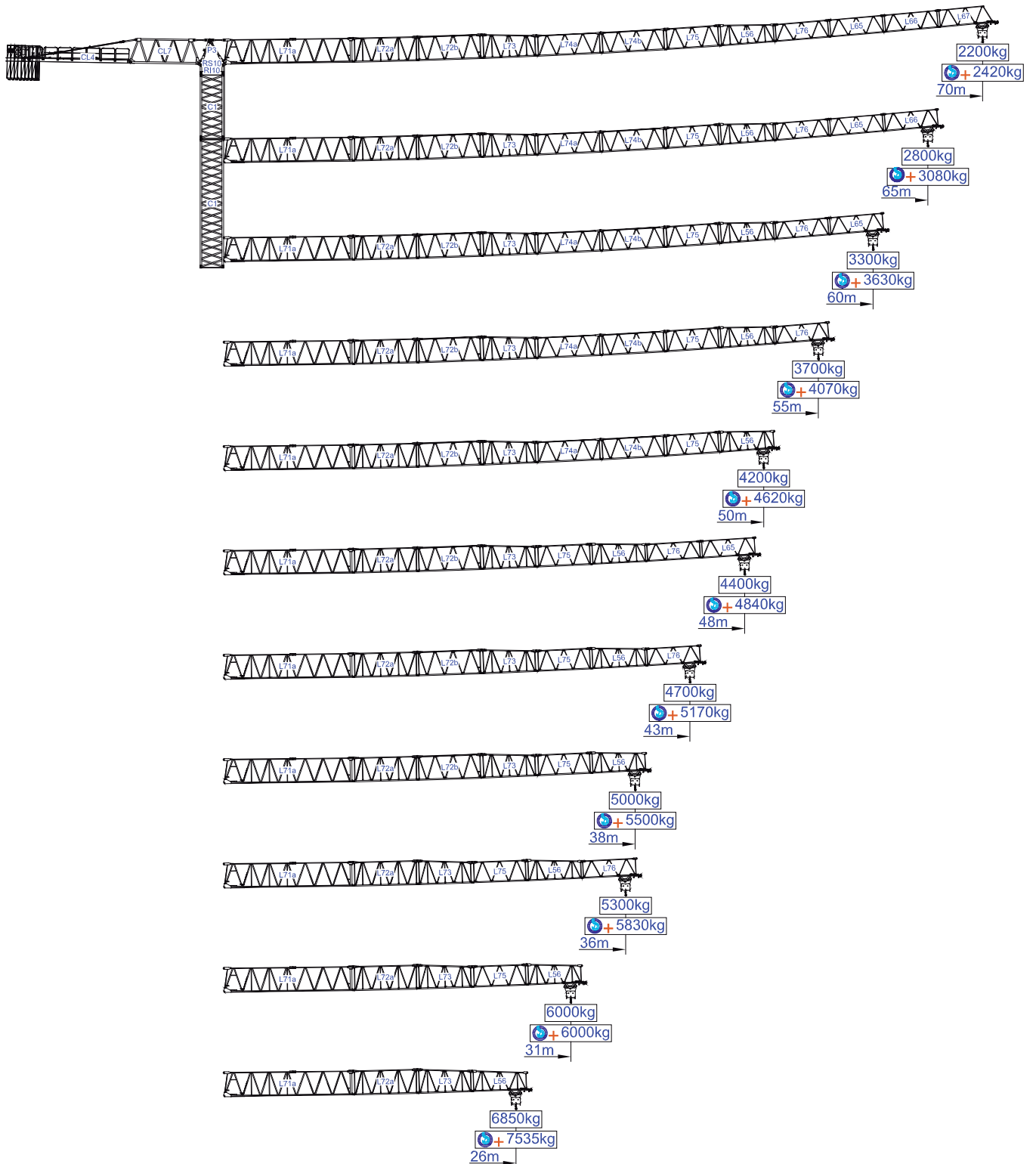
www.staffordsoima.com






Empresa certificada no âmbito da Conceção e Fabrico de Gruas Soima






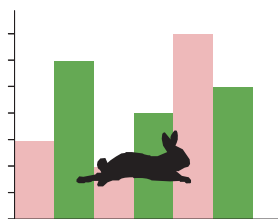









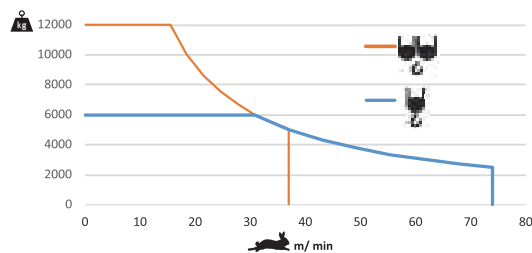
m																				m	t
		12t	6t	10	15	18	21	26	31	36	38	43	48	50	55	60	65	70			
70	18 t 8x2+2x1t	14,70	29,10	12,0	11,7	9,6	8,1	6,4	5,6	4,8	4,5	3,9	3,4	3,3	2,9	2,7	2,4	2,2	2,2		+
				12,0	12,0	10,6	8,9	7,0	6,0	5,2	4,9	4,3	3,8	3,6	3,2	2,9	2,7	2,4	2,4		
65	18 t 8x2+2x1 t	16,60	33,00	12,0	12,0	11,0	9,3	7,4	6,0	5,5	5,1	4,5	4,0	3,8	3,4	3,1	2,8				+
				12,0	12,0	12,0	10,2	8,1	6,6	6,0	5,7	4,9	4,4	4,2	3,7	3,4	3,1				
60	18 t 8x2+2x1 t	17,70	35,10	12,0	12,0	11,8	10,0	7,9	6,5	5,8	5,5	4,8	4,3	4,1	3,7	3,3					+
				12,0	12,0	12,0	11,0	8,7	7,1	6,0	6,0	5,3	4,7	4,5	4,0	3,6					
55	17 t 8x2+1x1 t	17,90	35,50	12,0	12,0	11,9	10,1	8,0	6,6	5,9	5,6	4,9	4,3	4,1	3,7						+
				12,0	12,0	12,0	11,1	8,8	7,2	6,0	6,0	5,4	4,7	4,5	4,1						
50	16 t 7x2+2x1 t	18,20	36,20	12,0	12,0	12,0	10,3	8,1	6,7	6,0	5,7	5,0	4,4	4,2							+
				12,0	12,0	12,0	11,3	9,0	7,3	6,0	6,0	5,5	4,8	4,6							
48	15 t 7x2+1x1 t	18,20	36,20	12,0	12,0	12,0	10,3	8,2	6,7	6,0	5,7	5,0	4,4								+
				12,0	12,0	12,0	11,3	9,0	7,4	6,0	6,0	5,5	4,8								
43	13 t 6x2+1x1 t	17,30	34,40	12,0	12,0	11,5	9,8	7,7	6,3	5,7	5,4	4,7									+
				12,0	12,0	12,0	10,7	8,5	6,9	6,0	5,9	5,2									
38	11 t 5x2+1x1 t	16,20	32,20	12,0	12,0	10,7	9,1	7,1	6,0	5,3	5,0										+
				12,0	12,0	11,8	10,0	7,9	6,0	5,8	5,5										
36	9 t 4x2+1x1 t	16,20	32,10	12,0	12,0	10,7	9,0	7,1	6,0	5,3											+
				12,0	12,0	11,8	9,9	7,8	6,0	5,8											
31	8 t 3x2+2x1 t	15,60	31,00	12,0	12,0	10,3	8,7	6,9	6,0												+
				12,0	12,0	11,3	9,6	7,5	6,0												
26	7 t 3x2+1x1 t	15,30	30,40	12,0	12,0	10,3	8,7	6,9													+
				12,0	12,0	11,3	9,6	7,5													


			A (mm)	B (mm)	C (mm)	kg	
Jib / Lança / Fleche / Braccio		L71A	11970	1900	2900	6750	
/ Ausleger / кливер		L72A	6185	1160	2260	1400	
		L72B	6195	1160	2260	1140	
		L73	5230	1160	2260	780	
		L74A	6165	1160	1950	830	
		L74B	6165	1160	1950	710	
		L75	5200	1160	1950	560	
		L56	5200	1160	1930	530	
		L76	5160	1160	1610	400	
		L65	5110	1160	1610	360	
		L66	5110	1160	1610	300	
		L67	5110	1160	1610	300	
	Head turntable / Cabeçote / Pivot / Testa giradischi / Kopfplattenspieler		RS10	2620	2180	2150	8000
			RI10				
	Counter-jib / Contra lança / Contre-fleche		P3	2430	1300	760	1270
		CL7	11935	1450	2425	2600	
		CL4	11400	1500	500	4000	
Counterweight / Contrapeso / Contrepoids / Gegengewicht / Противовес		CP2	1160	330	3140	8x2000 16000	
		CP3	1160	165	3140	2x1000 2000	
Tower section / torre / Coupe tour / Sezione torre / Turmabschnitt / Секция башни		C1	12000	2180	2180	4200	
		C1	6130	2180	2180	2200	
		C1	3195	2180	2180	1200	
Climbing tower section		C1	3195	2250	2250	1360	
Foundation anchor / Tramo encastrar /		C1	2280	2150	2150	850	
Base Chassis		C1	8127	800	1370	4600	
			4200	380	1370	2x1700 3400	
TOTAL						8000	
Base Chassis		C1s	6605	800	1370	3420	
			3160	380	1370	2x1840 3680	
TOTAL						7100	




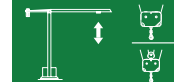
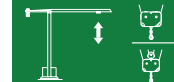
		
	0 a 1 r.p.m.	3x5 daN.m
	0 a 60 m/min	5,5 kW
	0-10 m/min	2x4 kW

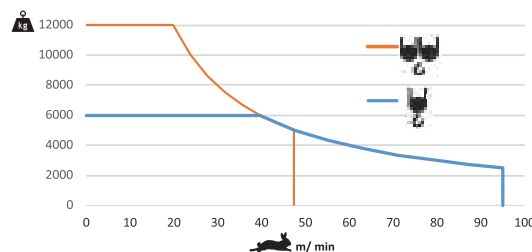



		
	0 a 74 m/min	37 kW
	0 a 37 m/min	



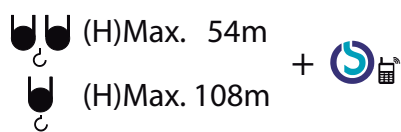
	55 kVA
	400 V +- 5% (50/60 Hz)

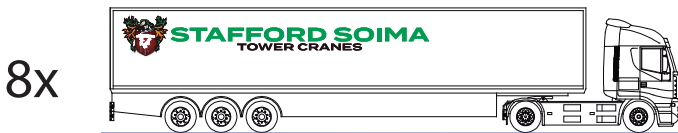
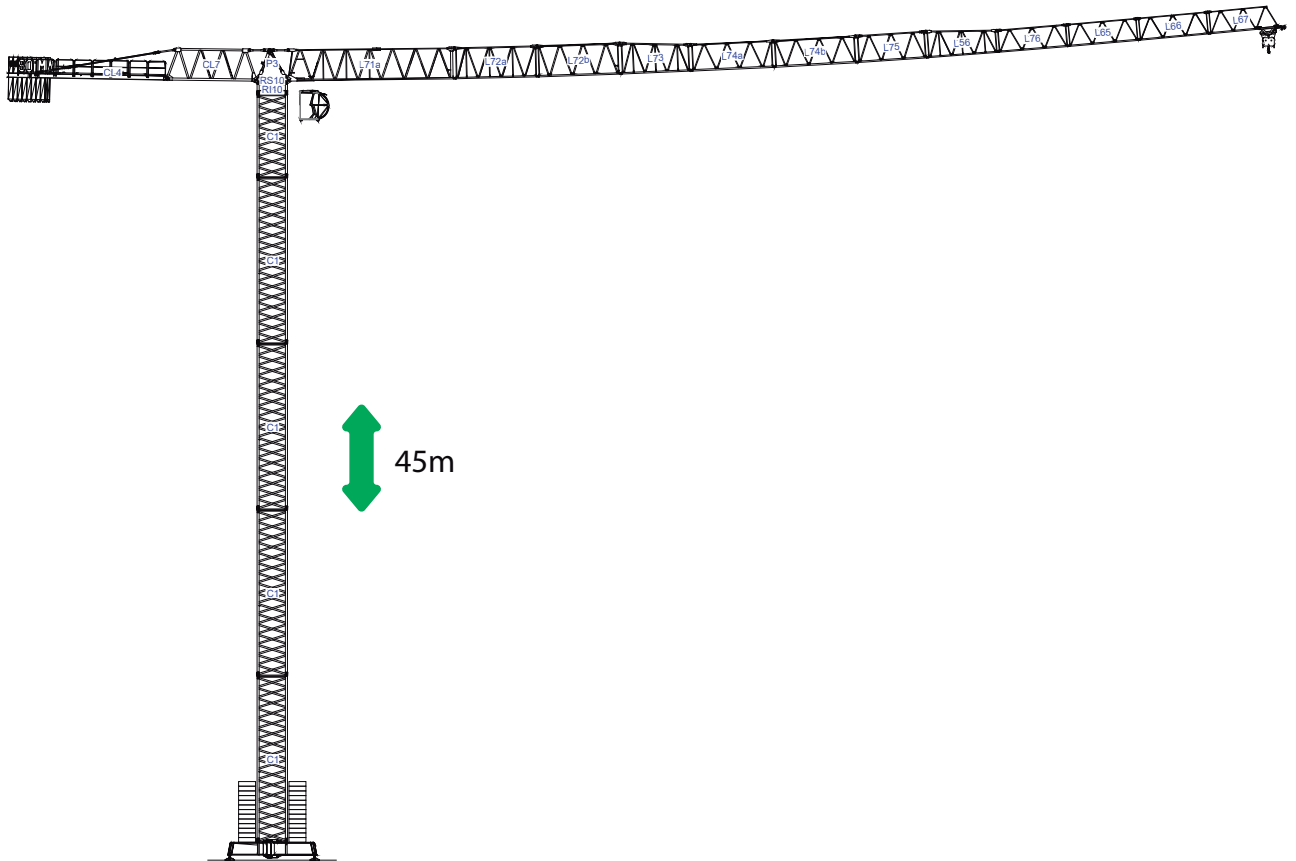
		
	0 a 95 m/min	45 kW
	0 a 47,5 m/min	



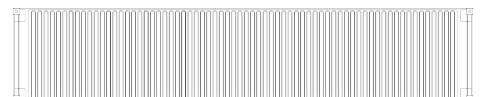
	65 kVA
	400 V +- 5% (50/60 Hz)

Max height of hoist



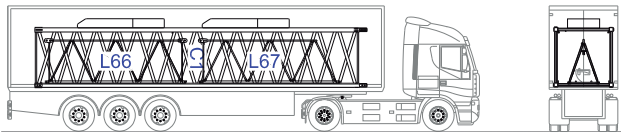


8x

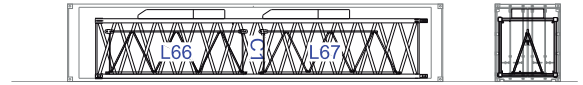


40' High Cube

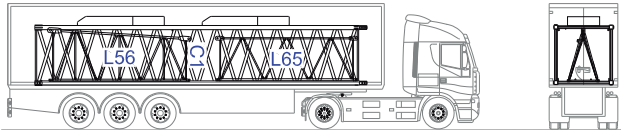
1



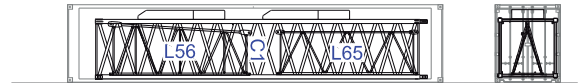
C1-L66-L67-2xCP2



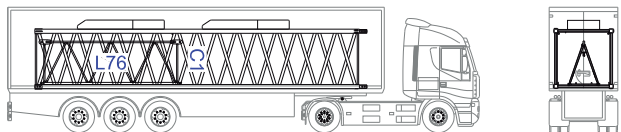
2



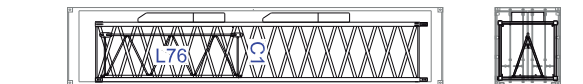
C1-L56-L65-2xCP2



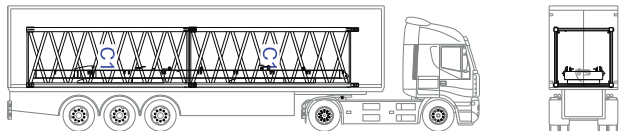
3



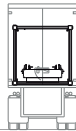
C1-L76-2xCP2



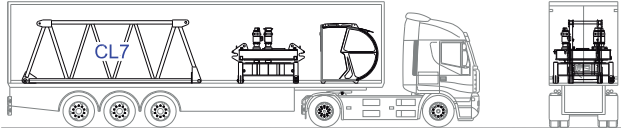
4



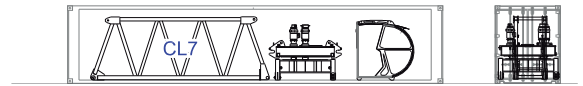
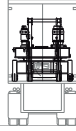
2xC1-CL4-2xCP3



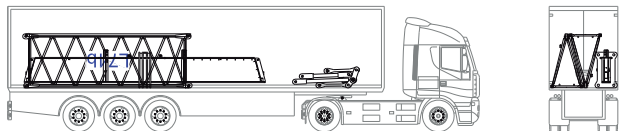
5



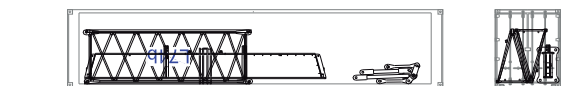
CL7-RI10-RS10-C1



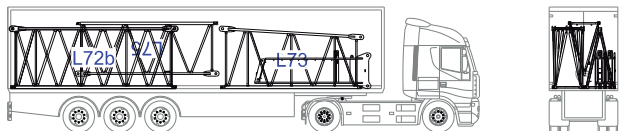
6



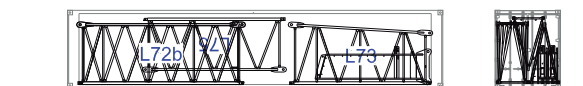
L42a-L42b-C1-P3



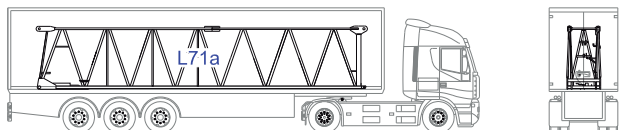
7



L72a-L72b-L73-L75-2xC1



8



CL7-RI10-RS10-C1

