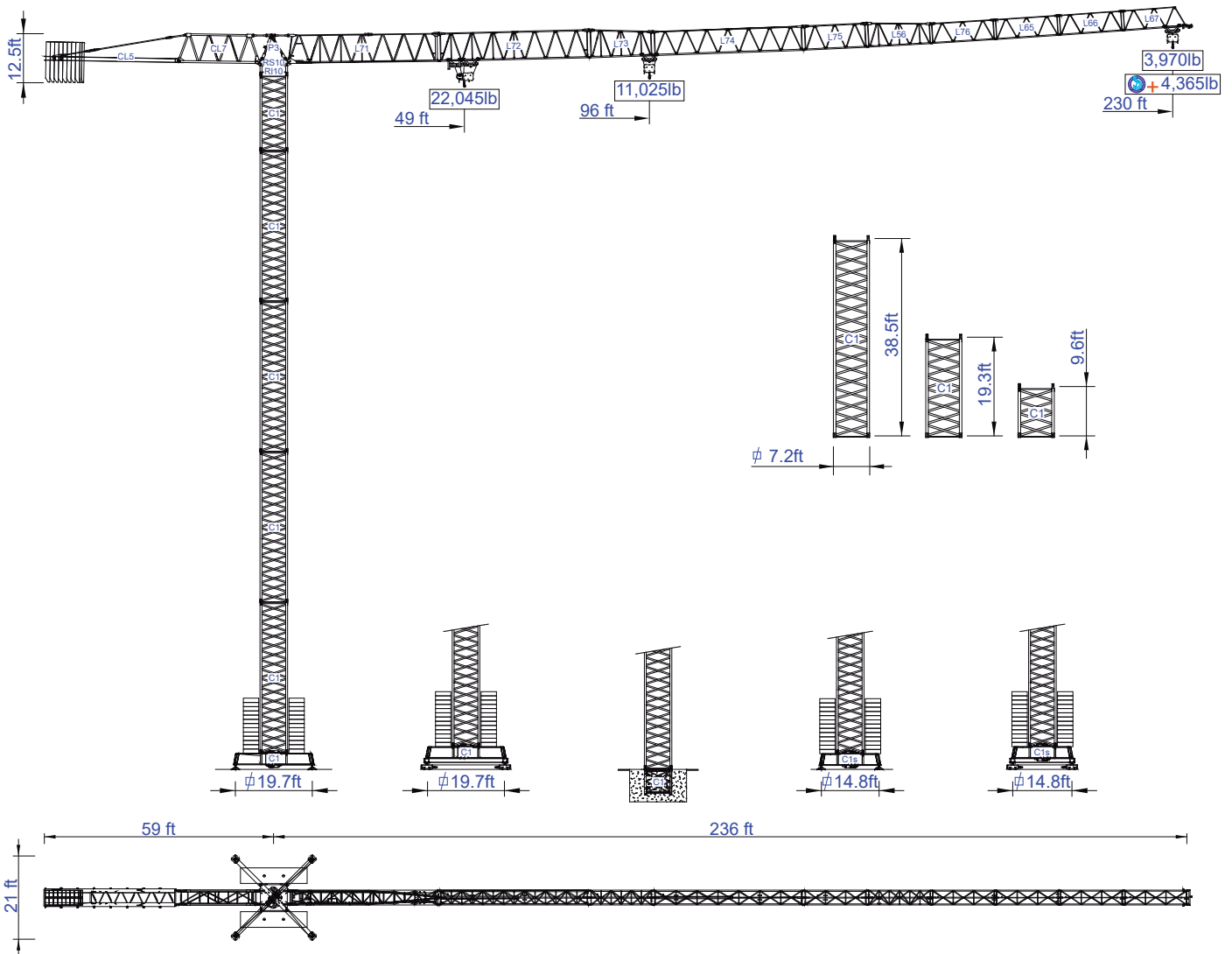




# STAFFORD SOIMA TOWER CRANES

## SGT 7018TL

Data Sheet  
Imperial



### Headquarters

3620 S. 40th Street, Phoenix, AZ, 85040 USA  
+1 (480) 993 3302

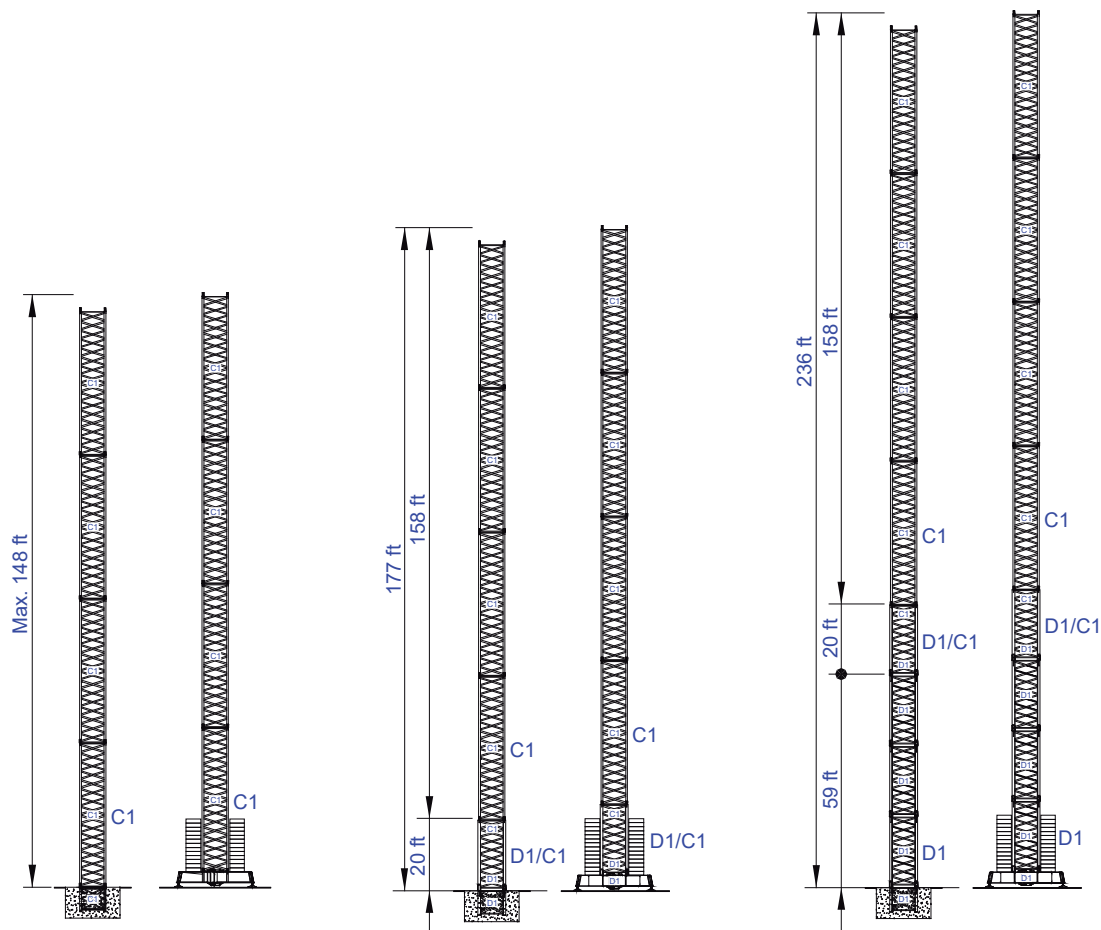
### Factory

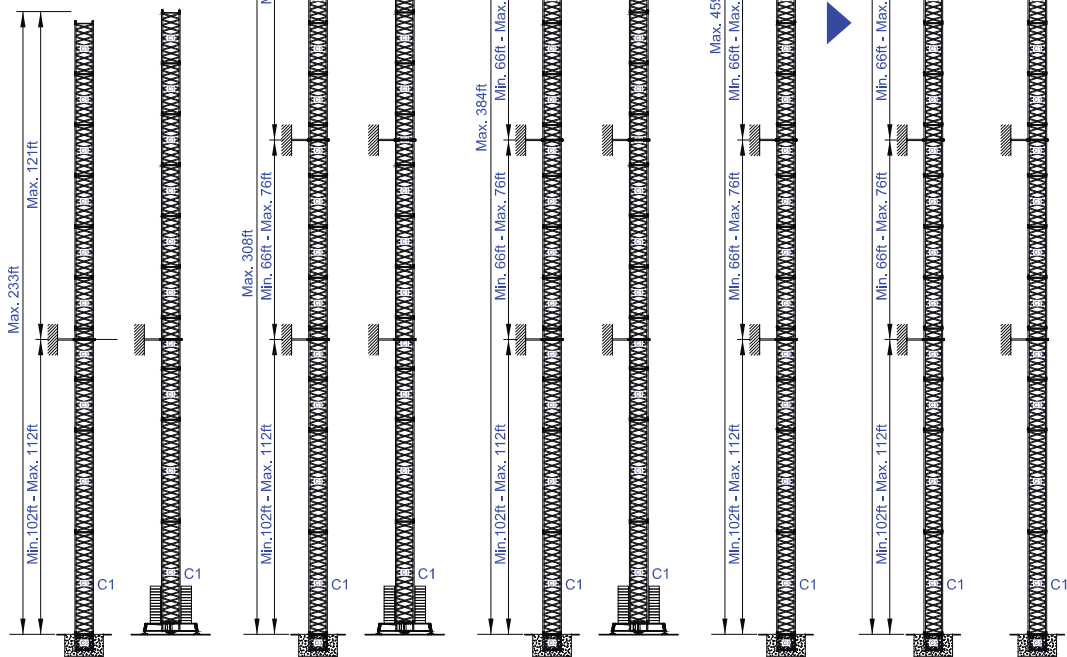
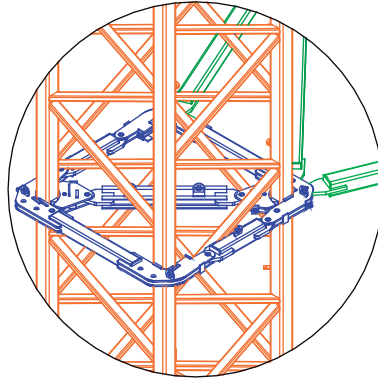
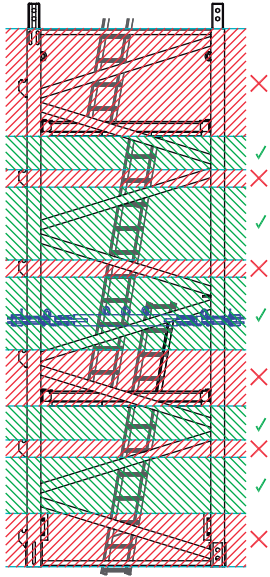
Zona Industrial de Canas de Senhorim - EN 234, 3525-040 Canas de Senhorim - Portugal  
+351 232 673 530 info@staffordsoima.com

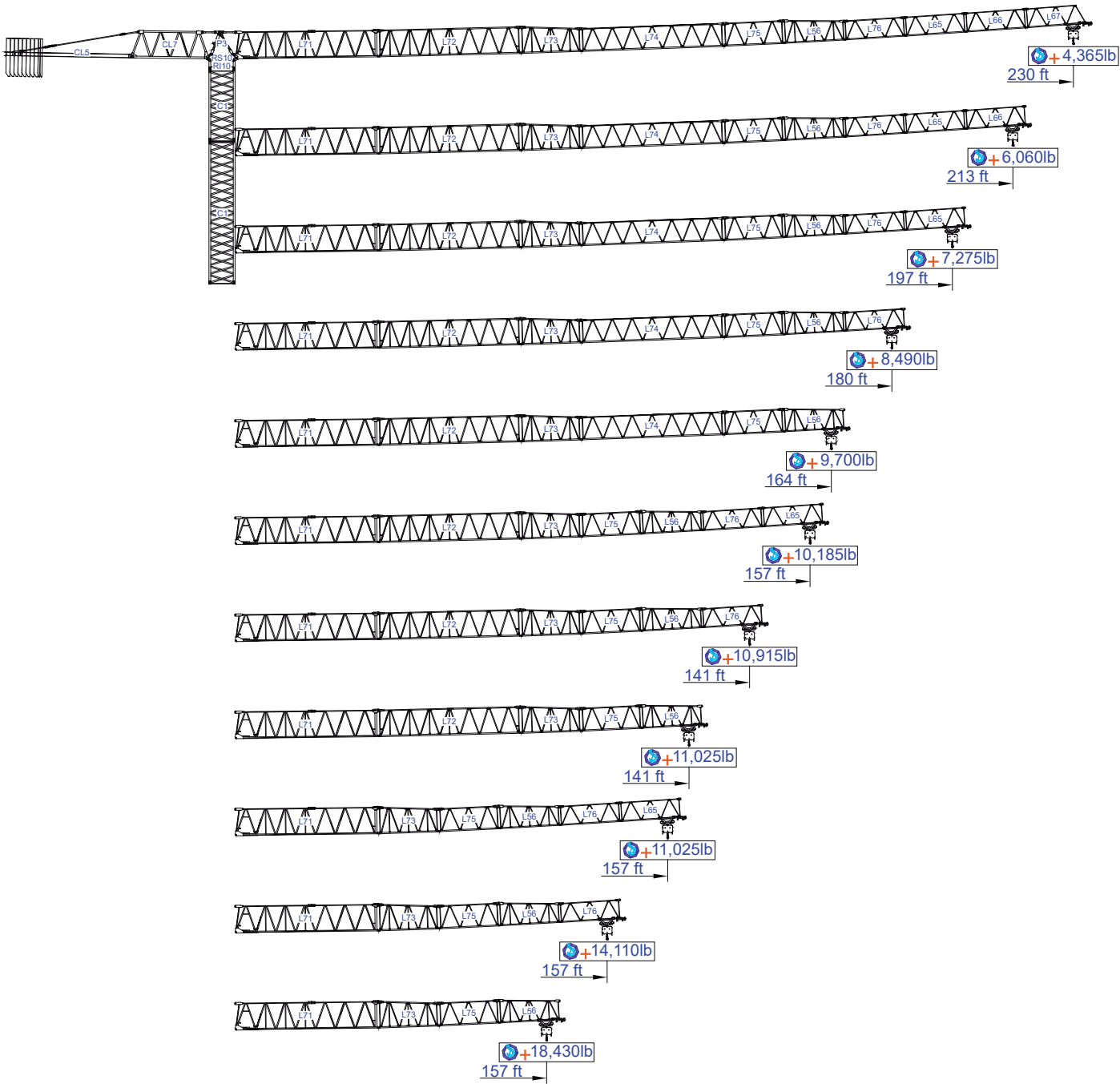
www.staffordsoima.com



















Empresa certificada no âmbito da Conceção e Fabrico de Gruas Soima














																	ft
	22,000lb	11,000lb	52	69	85	102	118	125	141	157	164	180	197	213	230	ft	
<b>39,680lb</b> 8x4,409lb + 2x2,204lb	48.6	96.1	20,280	14,990	11,680	10,360	7,500	8,380	7,280	6,390	5,950	5,290	4,850	4,410	3,970	lb	
			22,000	17,200	13,450	11,000	8,250	9,220	8,010	7,030	6,550	5,820	5,340	4,850	4,370		
<b>39,680lb</b> 8x4,409lb + 2x2,204lb	58.7	116.5	22,000	18,520	14,550	11,900	10,890	10,250	8,930	7,890	7,520	6,750	6,080	5,510			
			22,000	21,380	16,760	13,670	11,000	11,280	9,820	8,680	8,270	7,430	6,690	6,060			
<b>37,480lb</b> 8x4,409lb + 1x2,204lb	63.3	92.5	22,000	20,060	15,870	13,010	11,000	11,000	9,700	8,580	8,200	7,340	6,610				
			22,000	22,000	18,300	14,990	11,000	11,000	10,670	9,440	9,020	8,070	7,270				
<b>37,480lb</b> 8x4,409lb + 1x2,204lb	66.3	131.2	22,000	21,160	16,760	13,670	11,460	11,000	10,230	9,040	8,640	7,720					
			22,000	22,000	19,180	15,650	13,230	11,000	11,000	9,840	9,500	8,490					
<b>35,270lb</b> 8x4,409lb	67.7	134.2	22,000	21,830	17,200	14,110	11,900	11,240	10,490	9,260	8,820						
			22,000	22,000	19,840	16,310	13,670	13,010	11,000	10,190	9,700						
<b>30,860lb</b> 7x4,409lb	67.9	134.5	22,000	22,050	17,420	14,330	11,900	11,240	10,580	9,260							
			22,000	22,000	20,060	16,530	13,670	13,010	11,000	10,190							
<b>26,460lb</b> 6x4,409lb	64.6	128.0	22,000	20,940	16,530	13,450	11,240	11,000	9,920								
			22,000	22,000	18,960	15,430	13,010	11,000	11,020								
<b>24,250lb</b> 5x4,409lb + 1x2,204lb	63.0	124.7	22,000	20,280	15,870	13,010	11,000	11,020									
			22,000	22,000	18,300	14,990	11,000	11,000									
<b>19,840lb</b> 4x4,409lb + 1x2,204lb	59.7	122.4	22,000	20,060	15,870	13,010	11,000										
			22,000	22,000	18,300	14,990	11,000										
<b>17,640lb</b> 4x4,409lb	60.7	120.1	22,000	19,620	15,430	12,350											
			22,000	22,000	17,860	14,110											
<b>15,430lb</b> 3x4,409lb + 1x2,204lb	58.7	116.5	22,000	19,180	14,550												
			22,000	22,000	16,760												
ft																	

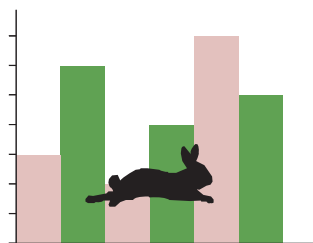
		A (ft)	B (ft)	C (ft)	lb	Code
L71		39.27	6.23	9.51	20,944	530 70 22
L72		39.27	3.81	7.41	5,512	
L73		17.16	3.81	7.41	1,653	
L74		39.21	3.81	6.40	3,086	
L75		17.06	3.81	6.40	1,102	
L56		17.06	3.81	6.33	1,301	
L76		16.99	3.81	5.28	816	
L65		16.77	3.81	5.28	728	
L66		16.77	3.81	5.28	661	
L67		16.77	3.81	5.28	661	
RS10 RI10		8.60	7.15	7.05	17,637	
P3		7.97	4.27	2.49	2,800	
CL7		39.16	4.76	7.96	5,732	
CL5		34.62	4.92	1.64	8,201	
CP2		3.81	1.08	10.30	8x4,409 35 274	
CP3		3.81	0.54	10.30	2x2,204 4 409	704 10 00
TOTAL					110,517	



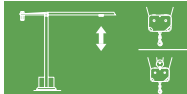

C1		39.38	7.15	7.15	9,259	509 12 00
C1		20.11	7.15	7.15	4,850	509 06 00
C1		10.48	7.15	7.15	2,646	508 12 03
C1		10.48	7.38	7.38	2,998	509 06 03
C1		7.48	7.05	7.05	1,874	509 06 02

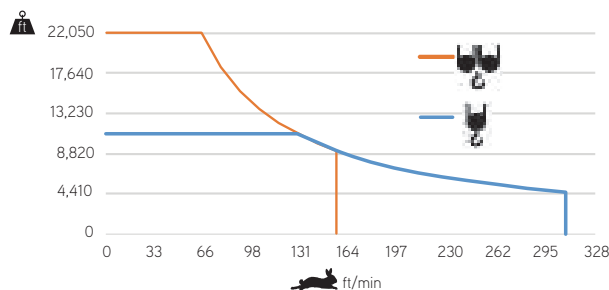
C1		26.67	2.63	4.50	10,141	609 00 02
		13.78	1.25	4.50	2x6,117 7,496	
TOTAL					17,637	


C1s		21.67	2.63	4.50	7,540	609 00 03
		10.37	1.25	4.50	2x4,057 8,114	
TOTAL					15,654	

		
	0 a 1 r.p.m.	3x36 ft/lbf
	0 a 196ft/min	5,5 kW
	0 a 32ft/min	2x4 kW

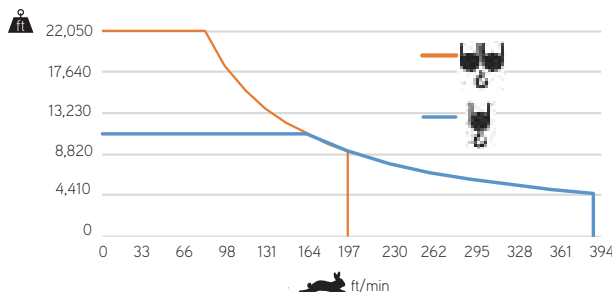



		
	0 a 308 ft/min	37 kW
	0 a 154 ft/min	






	55 kVA
	400 V +- 5% (50/60 Hz)

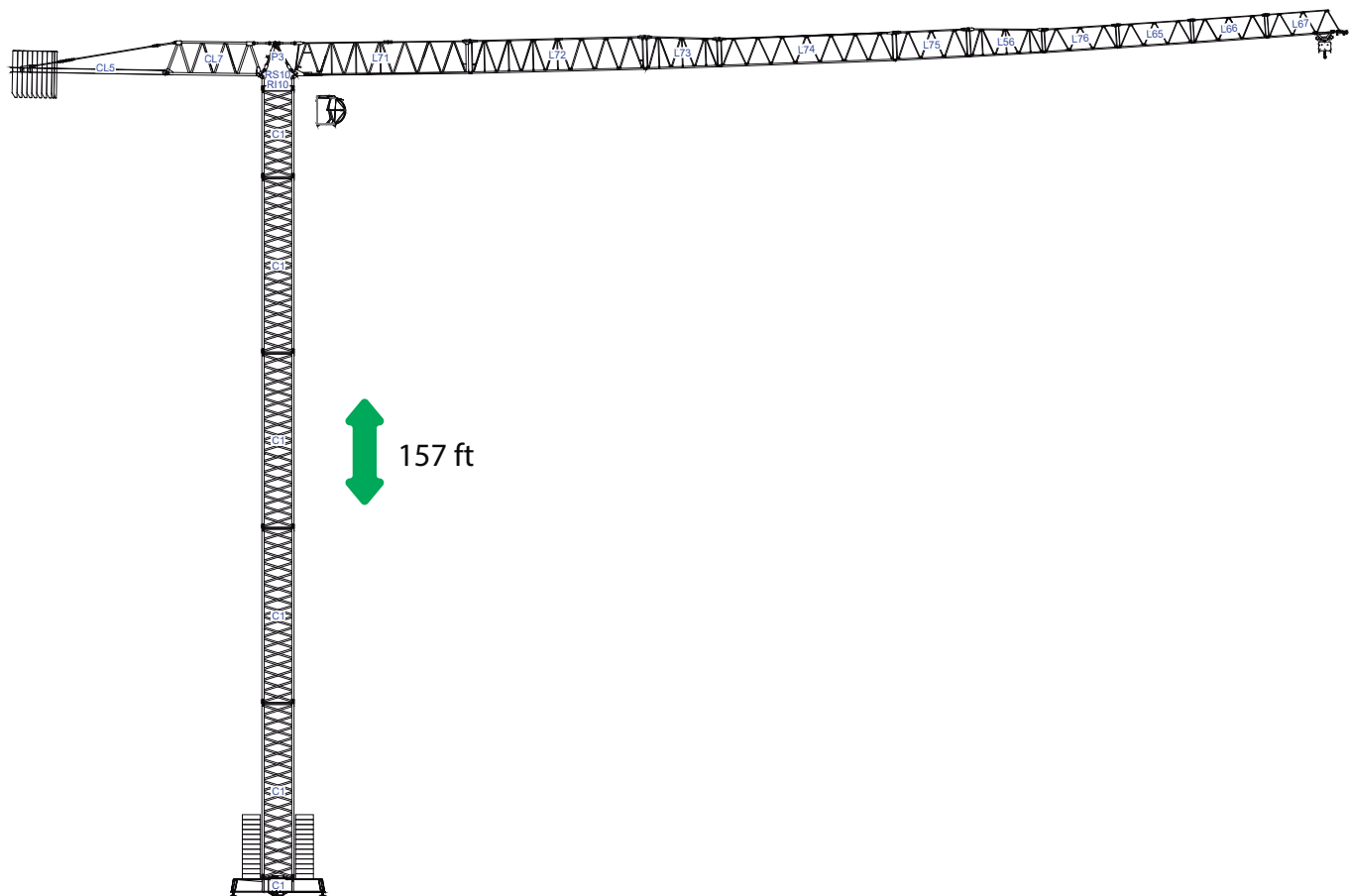
		
	0 a 387 ft/min	45 kW
	0 a 194 ft/min	



	65 kVA
	400 V +- 5% (50/60 Hz)

Max height of hoist

 (H)Max. 217ft  
 (H)Max. 433ft + 



8x



/

8x

