

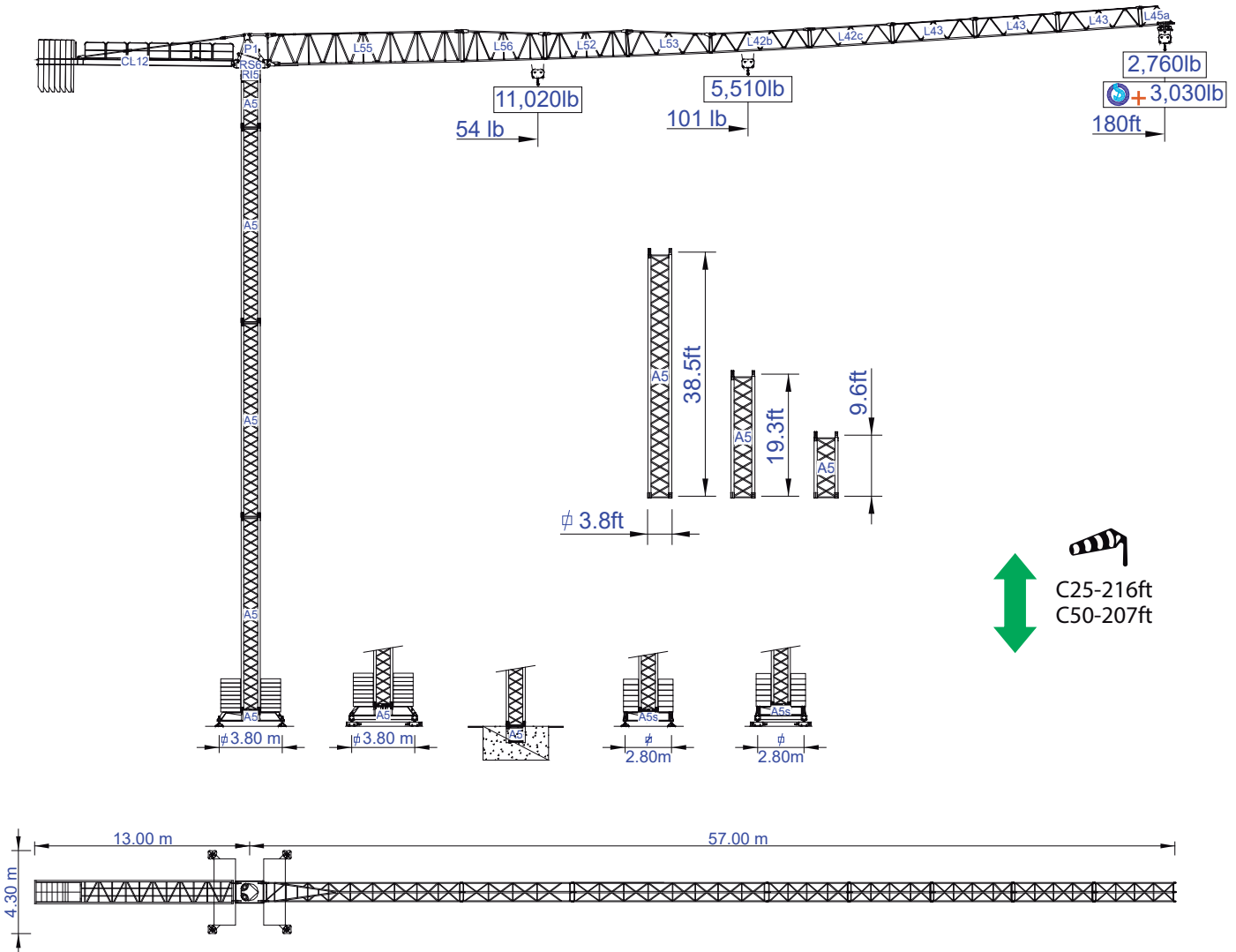


STAFFORD SOIMA

TOWER CRANES

SGT 5512TL

Data Sheet
Imperial



Headquarters

3620 S. 40th Street, Phoenix, AZ, 85040 USA
+1 (480) 993 3302

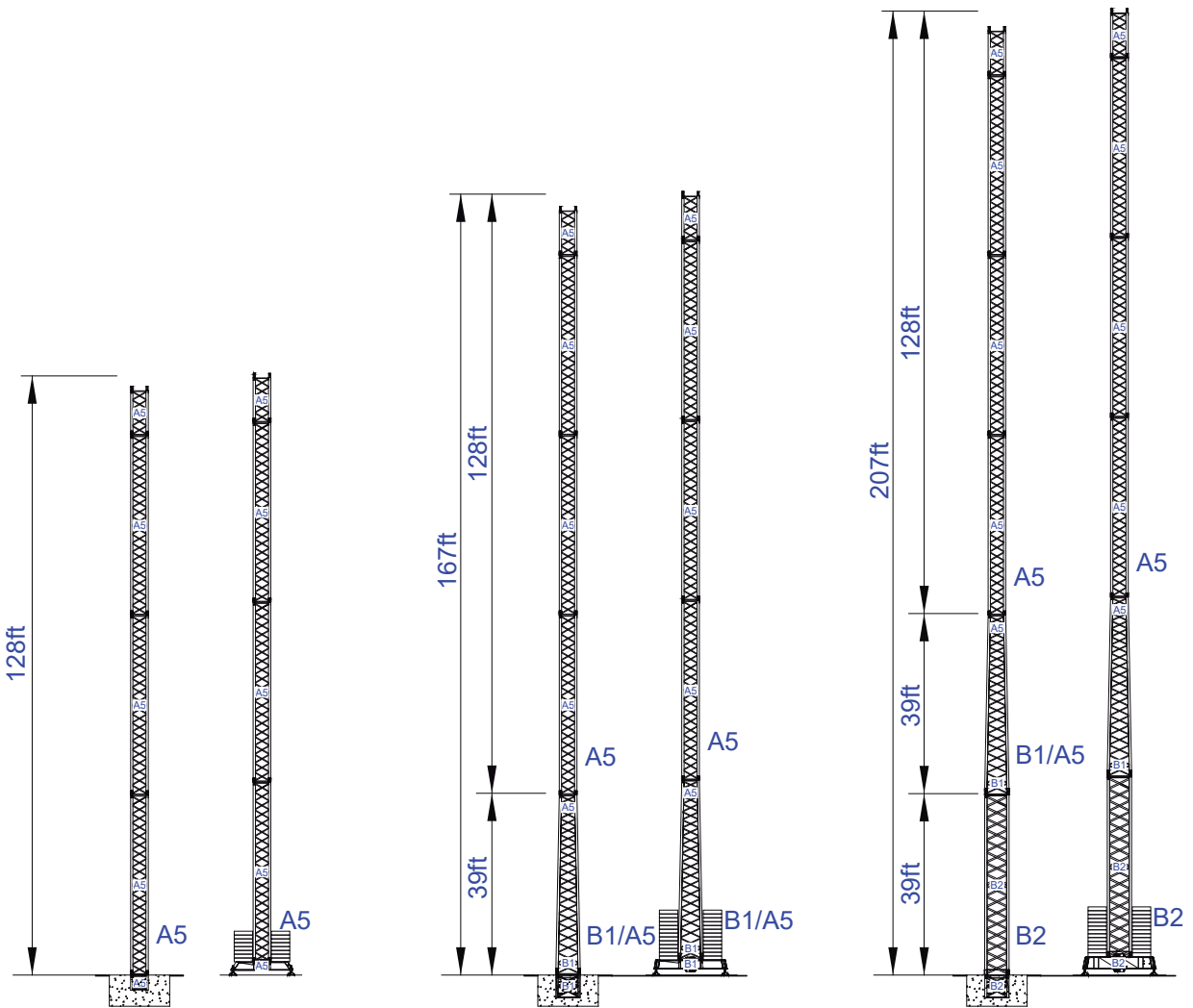
Factory

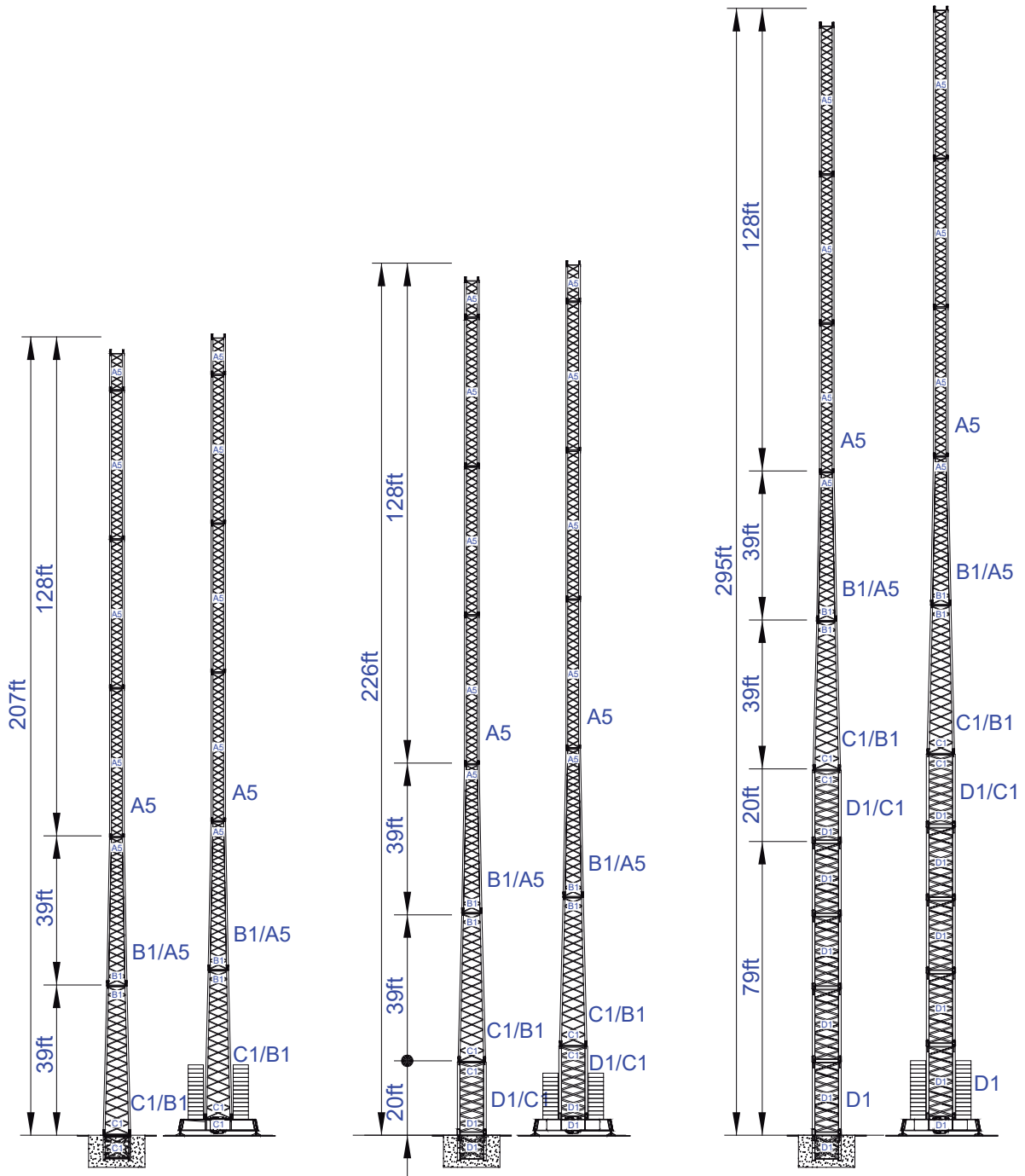
Zona Industrial de Canas de Senhorim - EN 234, 3525-040 Canas de Senhorim - Portugal
+351 232 673 530 info@staffordsoima.com

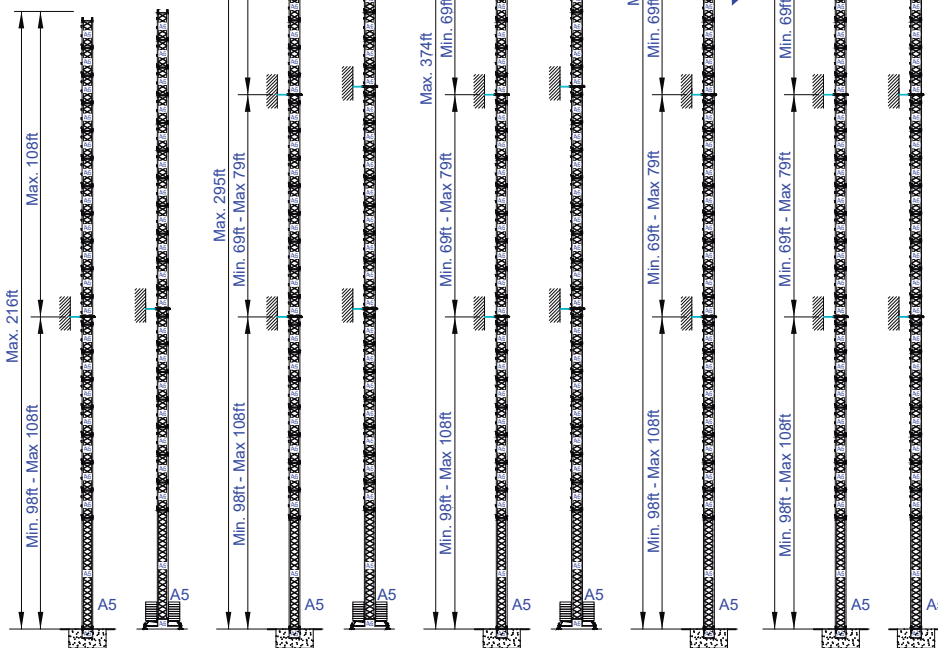
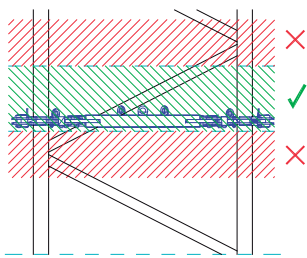
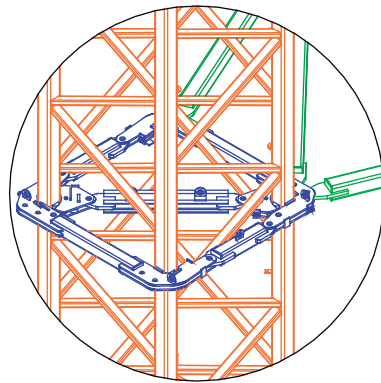
www.staffordsoima.com

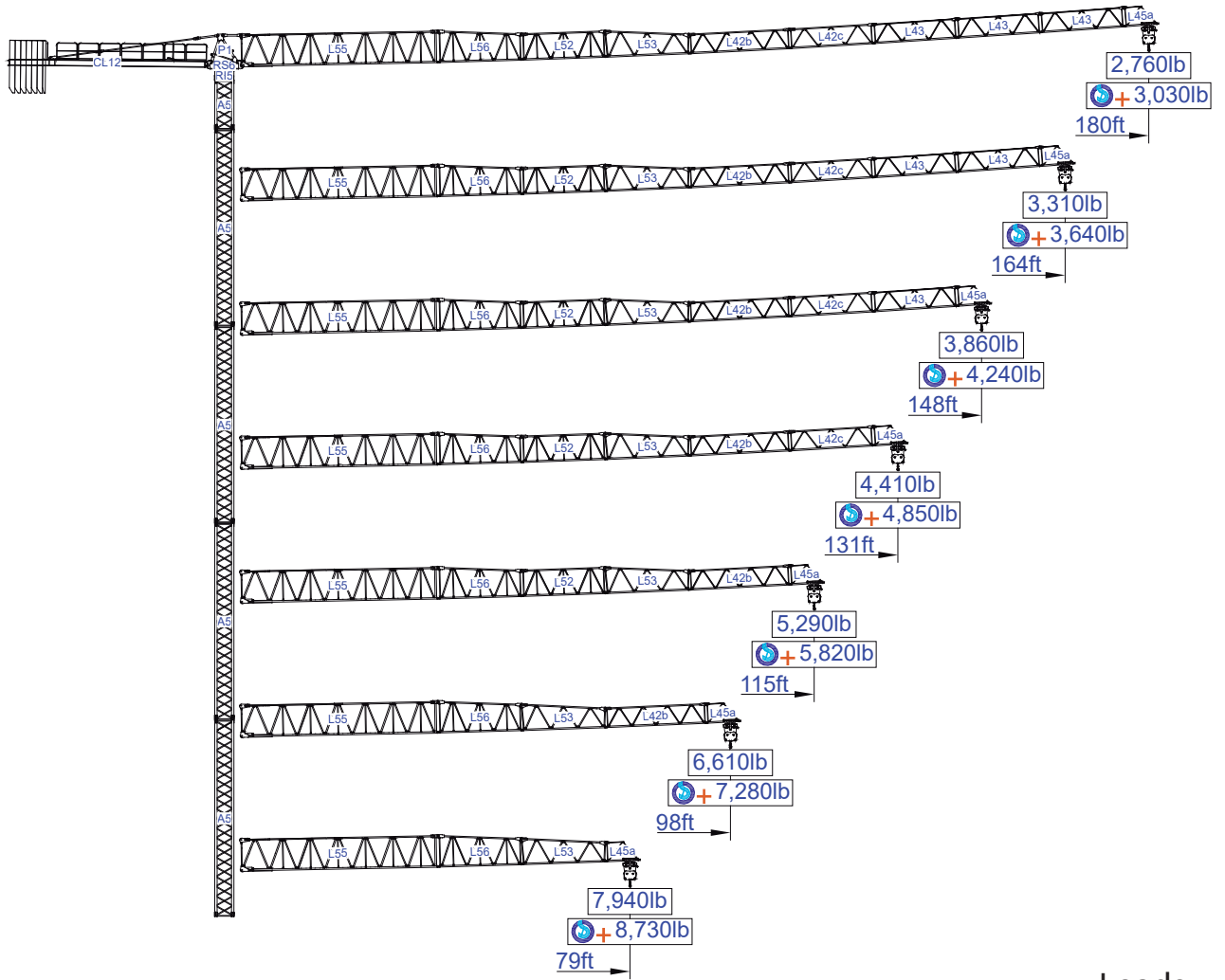


Empresa certificada no âmbito da Concepção e Fabrico de Gruas Soima



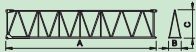


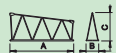

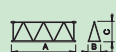

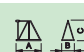


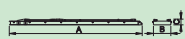


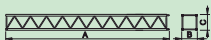

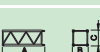

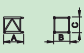
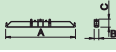
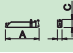
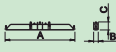
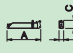




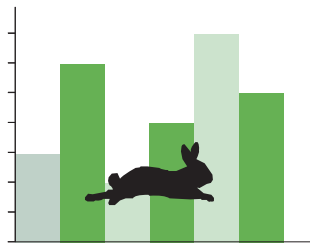


Loads

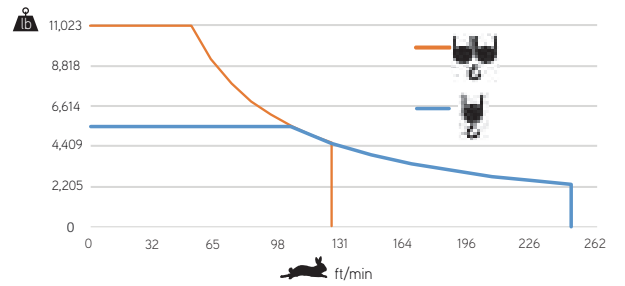
ft	Diagram	Hook Configurations		Jib Lengths (ft)											ft
		11,020lb	5,510lb	33	49	59	79	98	115	131	148	164	180		
180	41,885lb 9x4,409lb + 1x2,204lb	54,0	101,3	11,020	11,020	10,010	7,320	5,690	4,760	4,080	3,540	3,110	2,760	lb	
				11,020	11,020	11,020	8,050	6,260	5,240	4,490	3,890	3,420	3,030	+	
164	26,455lb 5x4,409lb + 2x2,204lb	56,7	106,5	5,510	5,510	5,510	5,510	4,760	4,080	3,550	3,110	2,760			
				11,020	11,020	11,020	6,060	5,240	4,490	3,900	3,420	3,030	+		
148	24,250lb 5x4,409lb + 1x2,204lb	58,0	108,8	5,510	5,510	5,510	5,510	5,050	4,320	3,770	3,310				
				11,020	11,020	11,020	6,060	5,510	4,750	4,150	3,640	+			
131	22,046lb 4x4,409lb + 2x2,204lb	57,6	108,2	5,510	5,510	5,510	5,510	5,180	4,430	3,860					
				11,020	11,020	11,020	6,060	5,510	4,870	4,240	+				
115	19,841lb 4x4,409lb + 1x2,204lb	59,0	110,8	5,510	5,510	5,510	5,510	5,160	4,410						
				11,020	11,020	11,020	6,060	5,510	4,850	+					
98	17,636lb 3x4,409lb + 2x2,204lb	61,6	115,7	5,510	5,510	5,510	5,510	5,290							
				11,020	11,020	11,020	6,060	5,510	+						
79	13,227lb 2x4,409lb + 2x2,204lb	58,1	109,1	5,510	5,510	5,510	5,510								
				11,020	11,020	11,020	6,060	+							

			A (ft)	B (ft)	C (ft)	lb(±5%)
Jib		L55	39.21	3.97	8.53	6,834
		L56	17.06	3.81	6.33	1,301
		L52	17.06	3.81	5.41	1,179
		L53	17.06	3.81	5.41	1,124
		L42b	19.95	3.81	3.97	1,146
		L42c	16.99	3.81	3.97	816
		L43	16.73	3.81	3.97	2x573 1,146
		L45a	6.89	3.81	3.97	265
Head turntable		RS6 RI5	7.38	4.43	6.73	5,820
		P1	5.45	4.00	5.64	1,587
Counter-jib		CL12	39.38	4.10	1.84	5,644
Counterweight		CP2	3.81	1.08	10.30	8x4,409 22,046
		CP3	3.81	0.54	10.30	2x2,204 4,409
Tower section		A5	39.33	3.81	3.81	6,790
		A5	19.93	3.81	3.81	3,660
		A5	10.24	3.81	3.81	2,183
Climbing tower section		A5	10.14	4.54	4.54	2,293
Foundation anchor		A5	4.18	3.81	3.81	992
Base Chassis		A5	18.15	1.64	2.69	2,756
			7.45	1.18	2.69	2x2,161 2,800
TOTAL						5,556
Base Chassis		A5s	13.49	1.64	2.69	3,77
			6.41	1.18	2.69	2x1,279 2,557
TOTAL						5,093

	0 a 1 r.p.m.	2x29 ft/lbf
	0 a 196 ft/min	3 kW
	0 a 49 ft/min	2x3 kW

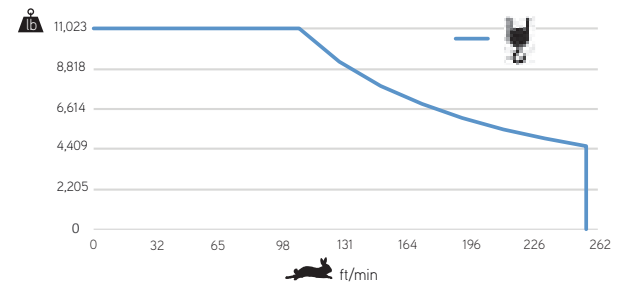


	0 a 256 ft/min	15kW
--	----------------	------



	55 kVA
	400 V +- 5% (50/60 Hz)

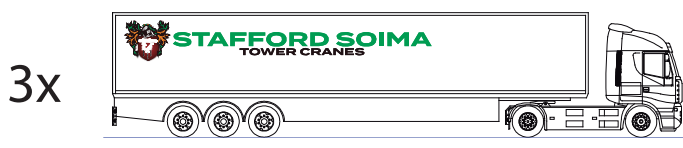
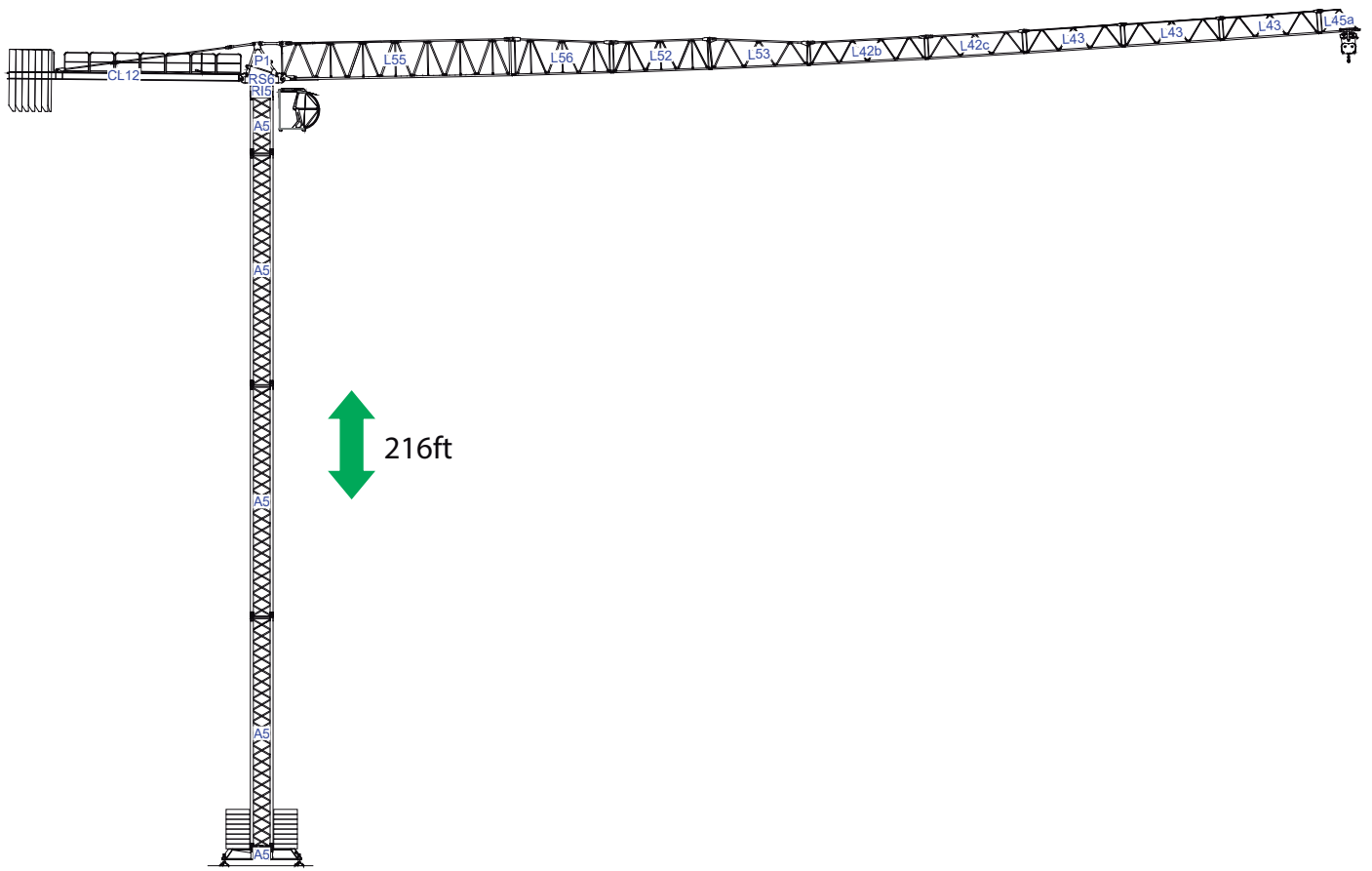
	0 a 256 ft/min	30 kW
--	----------------	-------



	55 kVA
	400 V +- 5% (50/60 Hz)

Max height of hoist

(H)Max. 433ft +



/ 3x

