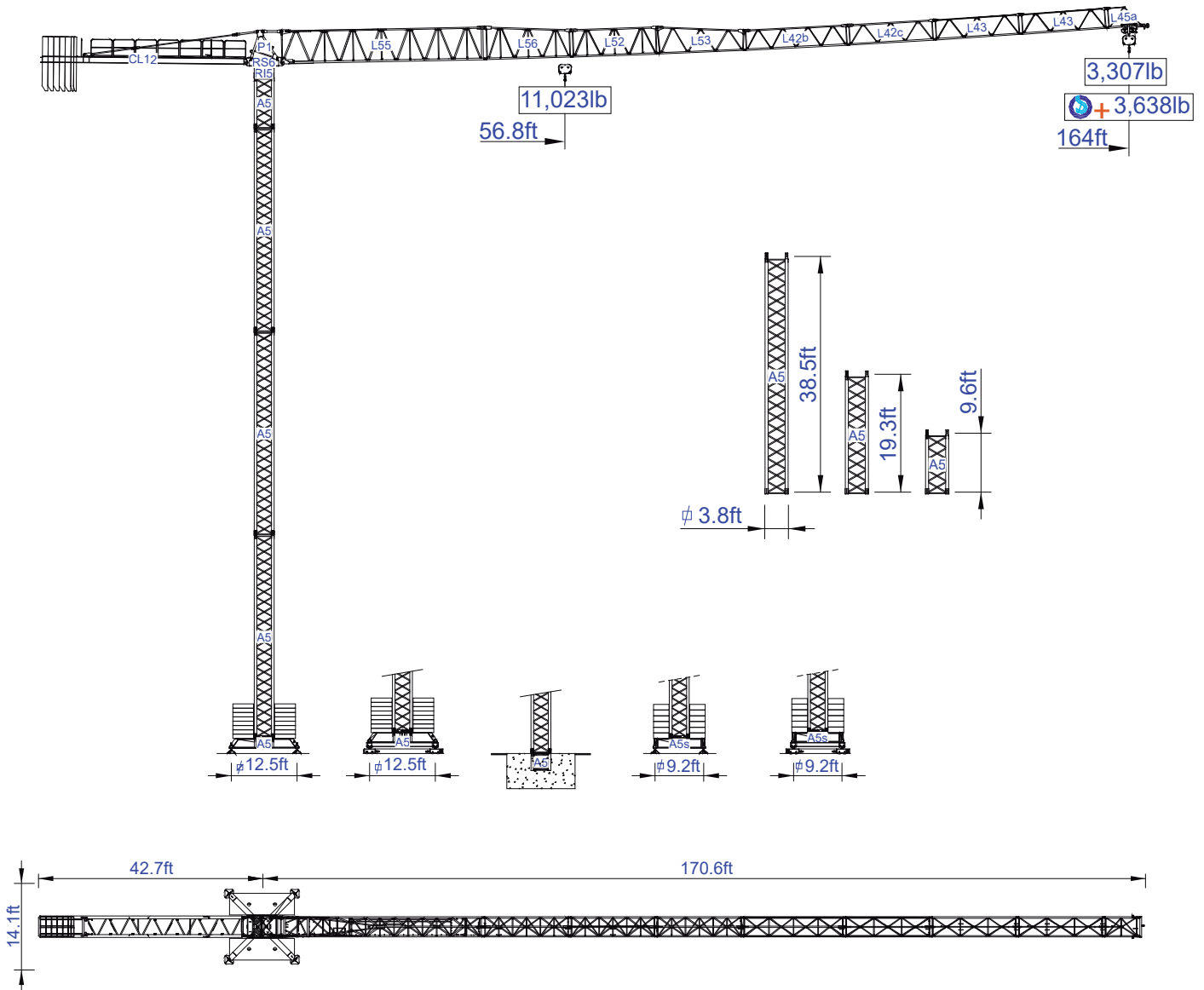




STAFFORD SOIMA TOWER CRANES

SGT 5015TL

Data Sheet
Imperial



Headquarters

3620 S. 40th Street, Phoenix, AZ, 85040 USA
+1 (480) 993 3302

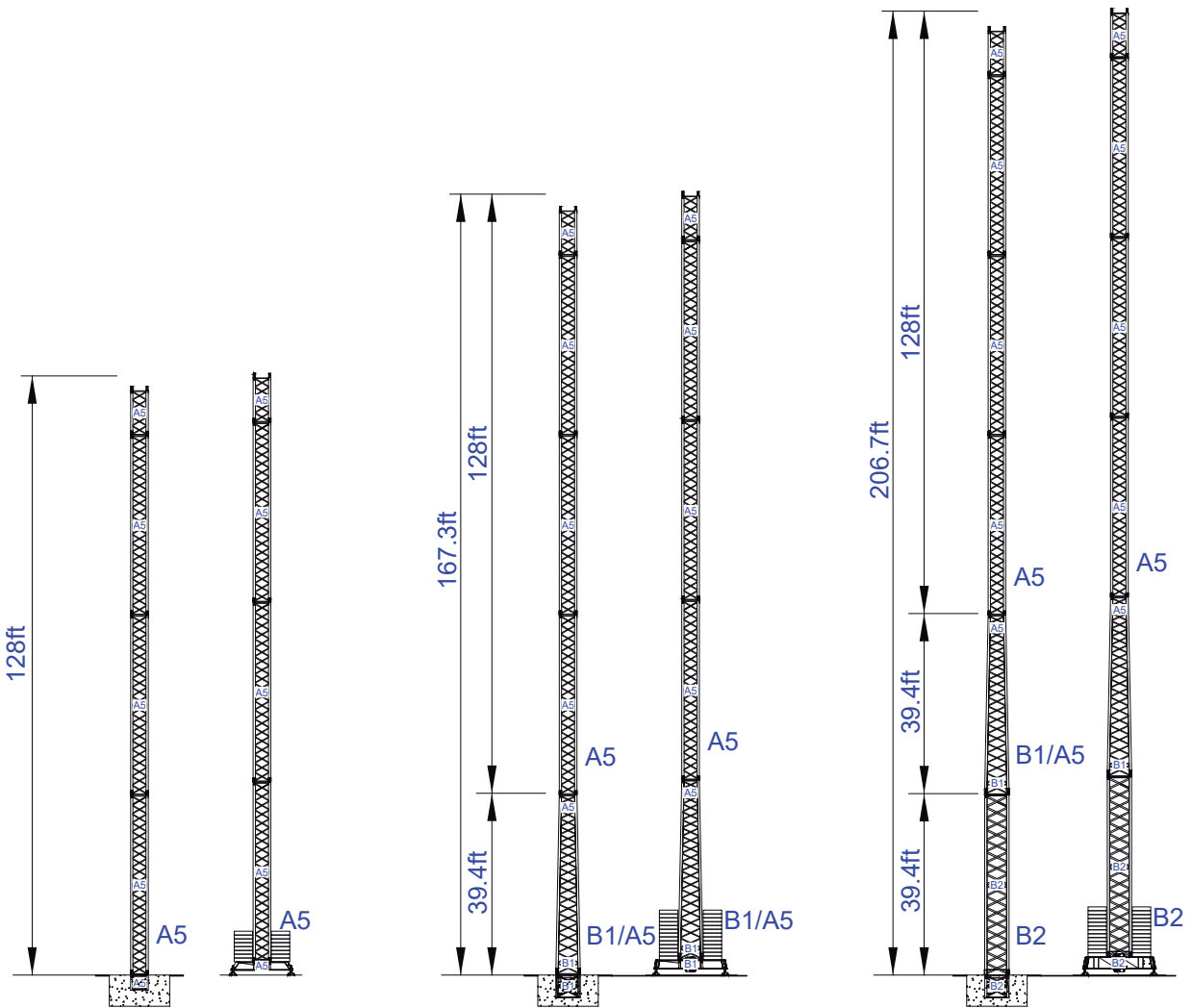
Factory

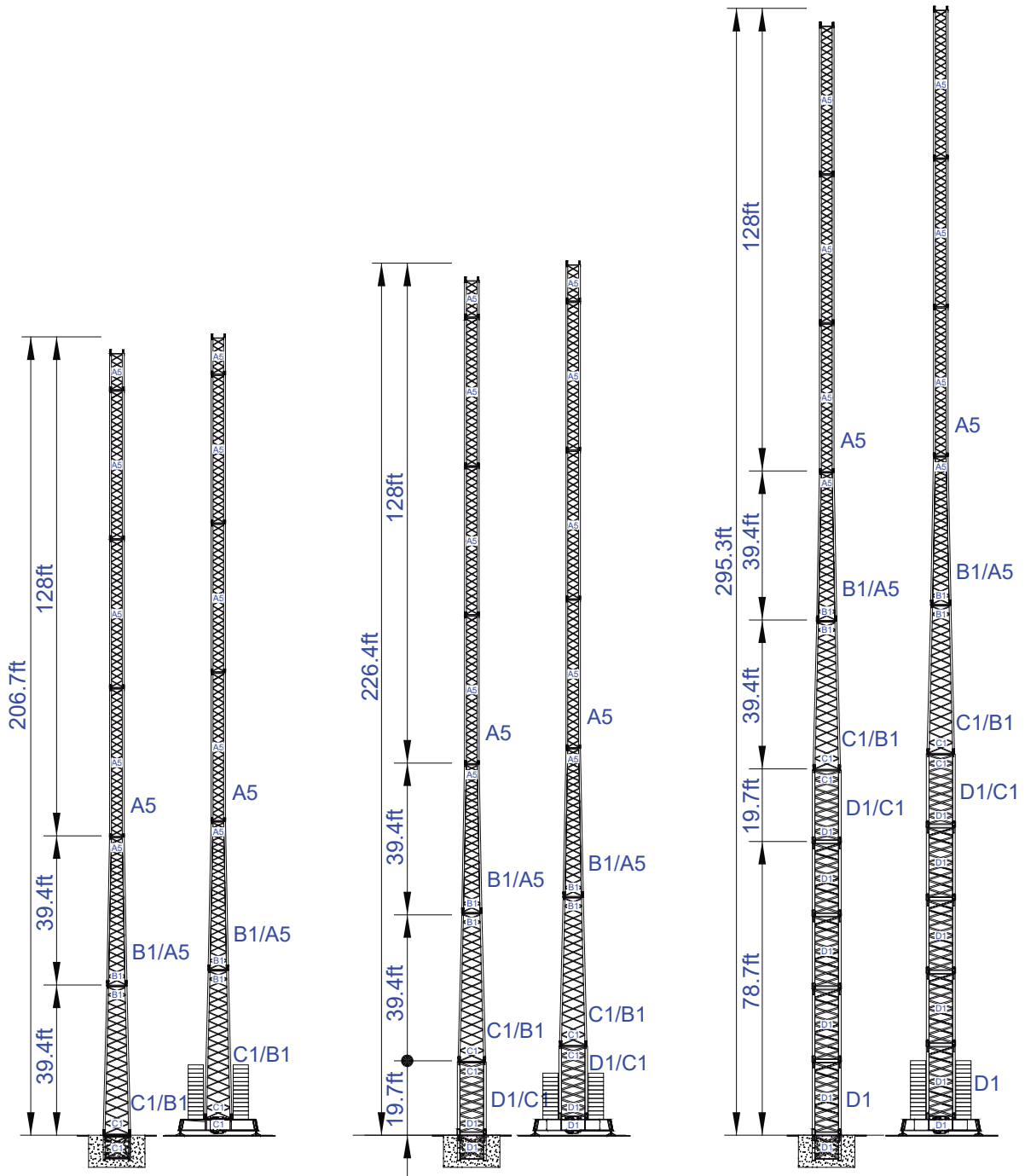
Zona Industrial de Canas de Senhorim - EN 234, 3525-040 Canas de Senhorim - Portugal
+351 232 673 530 info@staffordsoima.com

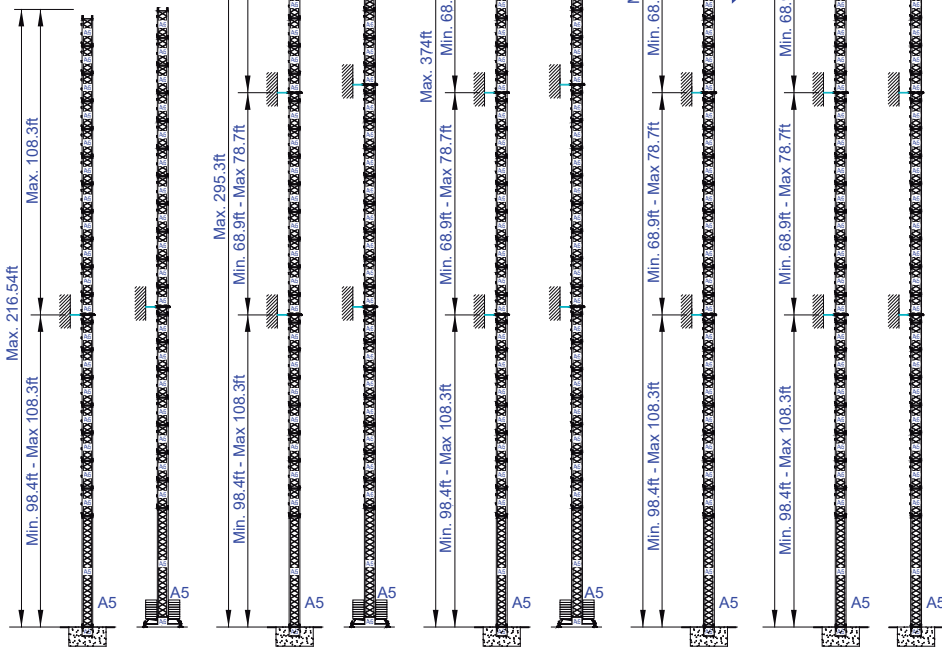
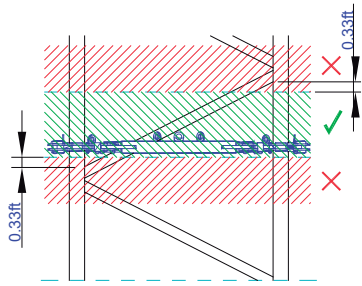
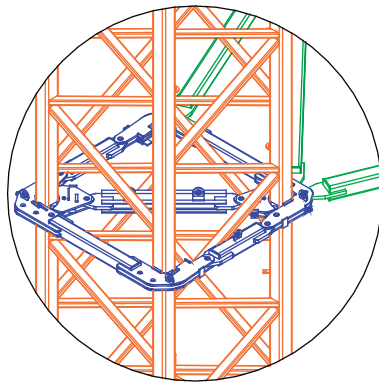
www.staffordsoima.com

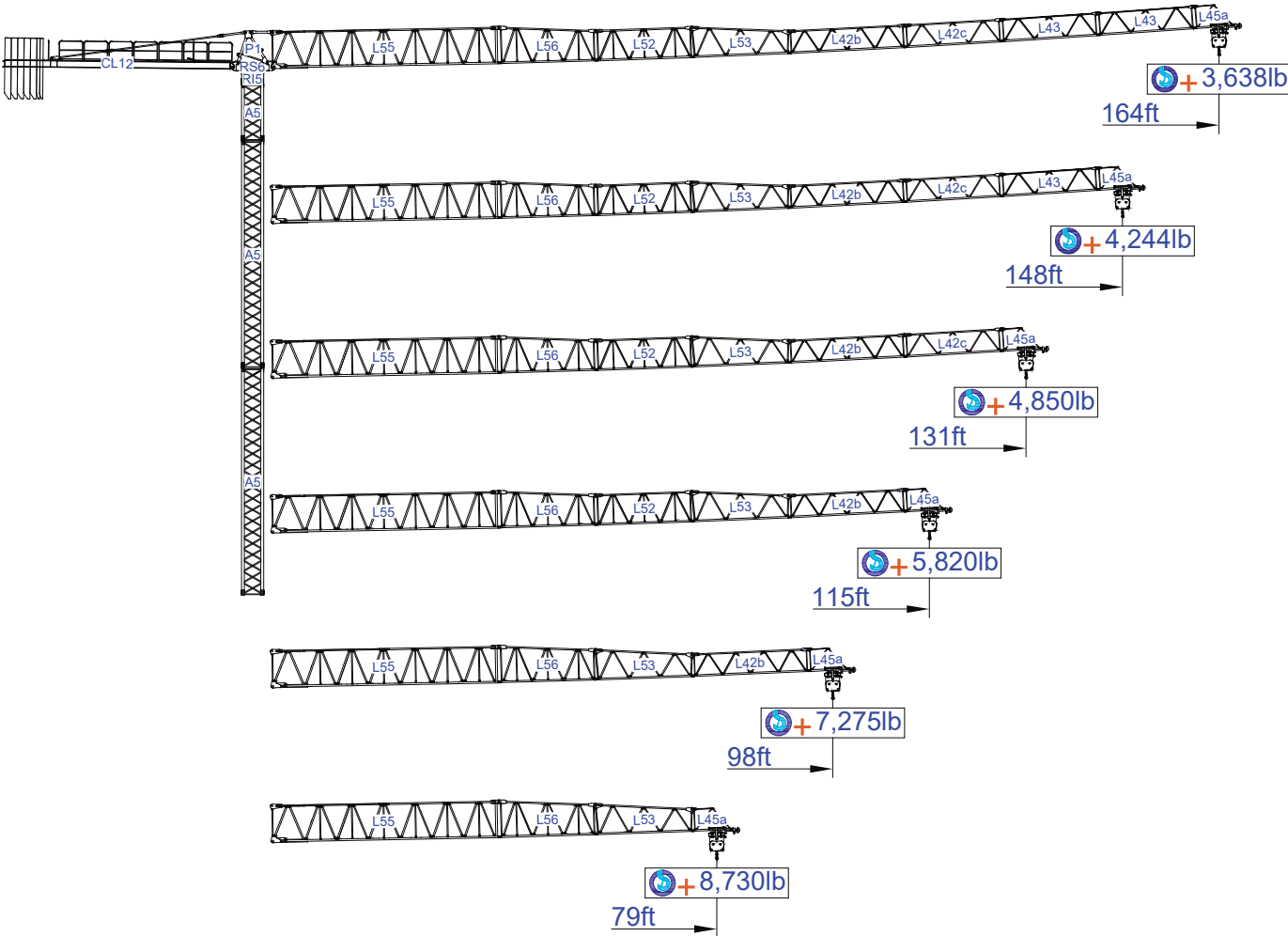


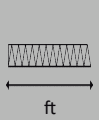
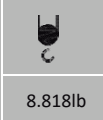







Empresa certificada no âmbito da Conceção e Fabrico de Gruas Soima

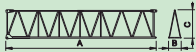


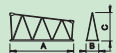

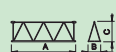




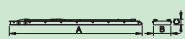


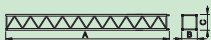

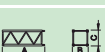

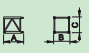
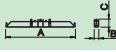
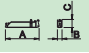
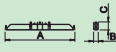
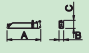











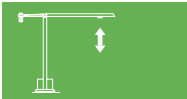


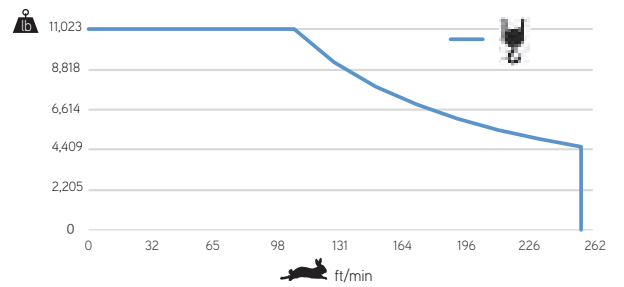
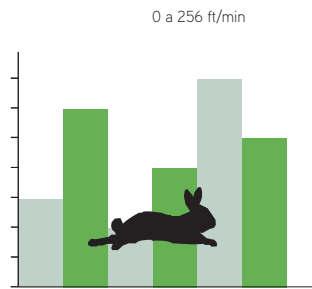



ft			ft									
			8.818lb	33	49	59	79	98	115	131	148	164
164	39,683lb 8x4,409lb + 2x2,204lb	56,7	11,023	11,023	10,560	7,716	6,019	5,049	4,321	3,770	3,307	
			11,023	11,023	11,023	8,488	6,620	5,553	4,753	4,147	3,638	
148	37,479lb 8x4,409lb + 1x2,204lb	58,0	11,023	11,023	10,803	7,915	6,173	5,181	4,431	3,858		
			11,023	11,023	11,023	8,706	6,790	5,699	4,874	4,244		
131	37,479lb 8x4,409lb + 1x2,204lb	57,6	11,023	11,023	10,737	7,871	6,129	5,159	4,409			
			11,023	11,023	11,023	8,658	6,742	5,675	4,850			
115	35,274lb 7x4,409lb + 2x2,204lb	59,0	11,023	11,023	11,023	8,069	6,305	5,291				
			11,023	11,023	11,023	8,876	6,936	5,820				
98	33,069lb 7x4,409lb + 1x2,204lb	61,6	11,023	11,023	11,023	8,466	6,614					
			11,023	11,023	11,023	9,312	7,275					
79	28,660lb 6x4,409lb + 1x2,204lb	58,1	11,023	11,023	10,847	7,937						
			11,023	11,023	11,023	8,730						
		ft										

			A (ft)	B (ft)	C (ft)	lb(±5%)	
Jib		L55	39.21	3.97	8.53	6,834	
		L56	17.06	3.81	6.33	1,301	
		L52	17.06	3.81	5.41	1,179	
		L53	17.06	3.81	5.41	1,124	
		L42b	19.95	3.81	3.97	1,146	
		L42c	16.99	3.81	3.97	816	
		L43	16.73	3.81	3.97	2x573 1,146	
		L45a	6.89	3.81	3.97	265	
Head turntable		RS6 RI5	7.38	4.43	6.73	5,820	
		P1	5.45	4.00	5.64	1,587	
Counter-jib		CL12	39.38	4.10	1.84	5,644	
Counterweight		CP2	3.81	1.08	10.30	8x4,409 22,046	
		CP3	3.81	0.54	10.30	2x2,204 4,409	
Tower section		A5	39.33	3.81	3.81	6,790	
		A5	19.93	3.81	3.81	3,660	
		A5	10.24	3.81	3.81	2,183	
Climbing tower section		A5	10.14	4.54	4.54	2,293	
Foundation anchor		A5	4.18	3.81	3.81	992	
Base Chassis		A5	18.15	1.64	2.69	2,756	
			7.45	1.18	2.69	2x2,161 2,800	
						TOTAL	5,556
Base Chassis		A5s	13.49	1.64	2.69	3,77	
			6.41	1.18	2.69	2x1,279 2,557	
						TOTAL	5,093




	
	0 a 1 r.p.m. 2x29 ft/lbf
	0 a 196 ft/min 3 kW
	0 a 49 ft/min 2x3 kW

	
	0 a 256 ft/min 30 kW



	55 kVA
	400 V +- 5% (50/60 Hz)

Max height of hoist

 (H) Max. 433ft +  

Transport

